



## Newsletter (#2, 2013)

Space Research Institute (SRI) NAS Ukraine and SSA Ukraine in cooperation with the UN-SPIDER Regional Support Office in Ukraine and Integration-Plus Ltd. deliver geoinformational services for agriculture needs:

- winter wheat yield forecast at oblast level for 2013 using satellite data as of 23 May 2013 (Appendix 1.1). Due to unfavourable weather conditions during past two weeks the forecasts have been declined for some regions (Appendix 1.2-1.3).
- winter rapeseed map and area estimation (example for the Lvivska oblast for 2012 is given in Appendix 2);
- operational vegetation state and anomalies monitoring with generalization by oblasts and counties available at <http://agromonitoring.ikd.kiev.ua/agromonitoring/maps/> (Appendix 3).

The following products are available on demand:

- crop rotation identification services;
- crop area estimation;
- crop state (variability) at field level.

---

Space Research Institute NAS and SSA of Ukraine,  
Ukraine, Kiev, Glushkov Ave, 40, 4/1,  
Phone.: +380(44)5262553  
Email: [inform@ikd.kiev.ua](mailto:inform@ikd.kiev.ua)

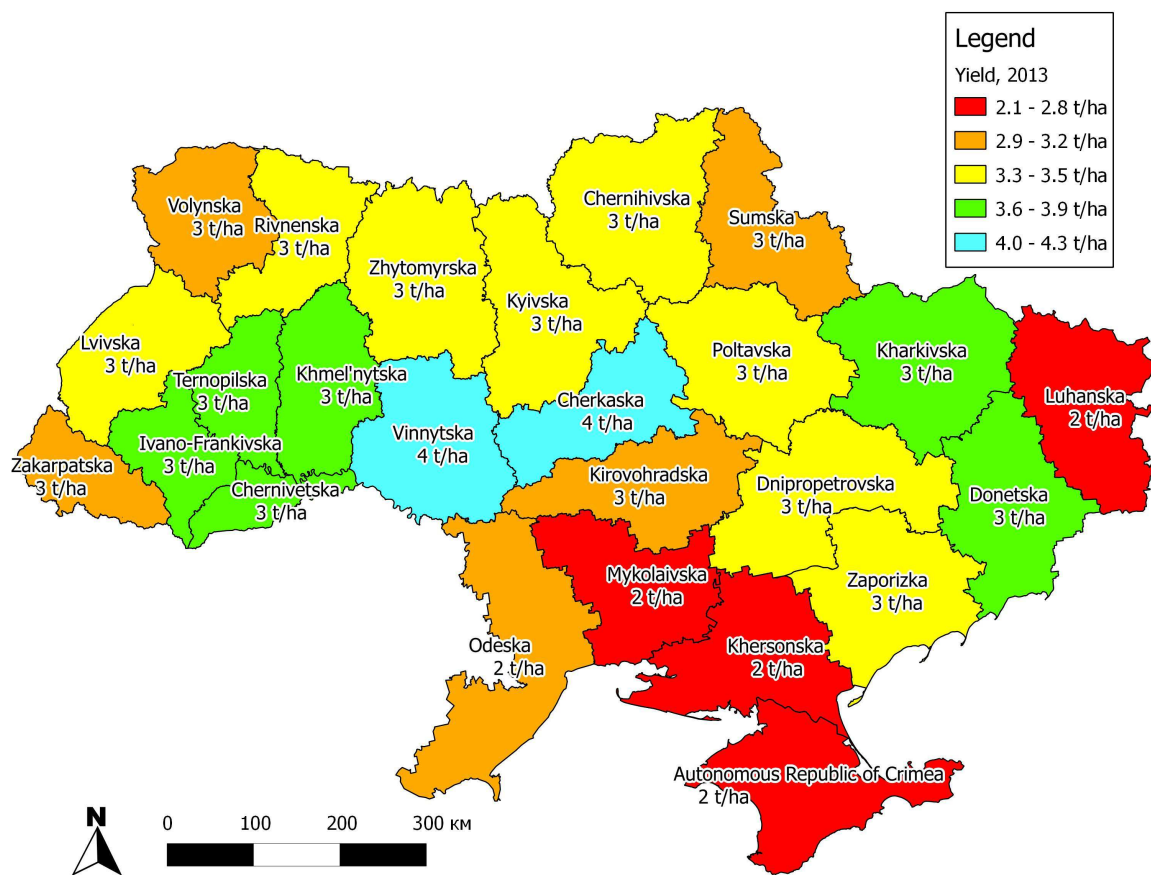
WWW: <http://inform.ikd.kiev.ua>, <http://un-spider.ikd.kiev.ua>  
Resources: <http://agromonitoring.ikd.kiev.ua/agromonitoring>





## Appendix 1.1

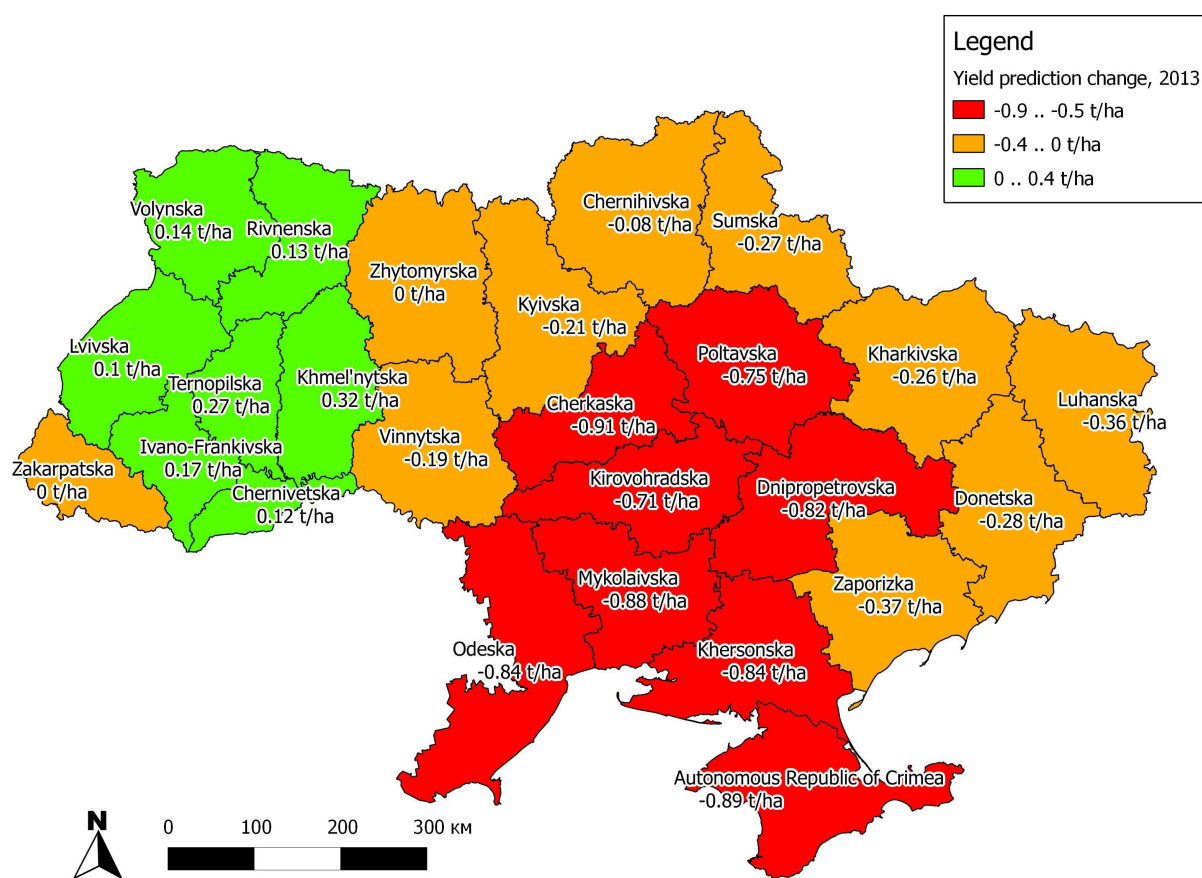
### Winter wheat yield forecasts for Ukraine for 2013 as of 23 May 2013





## Appendix 1.2

### Changes in winter wheat yield forecasts between 23.05.13 and 08.05.13



## Appendix 1.3

### Comparison of predicted yield in 2013

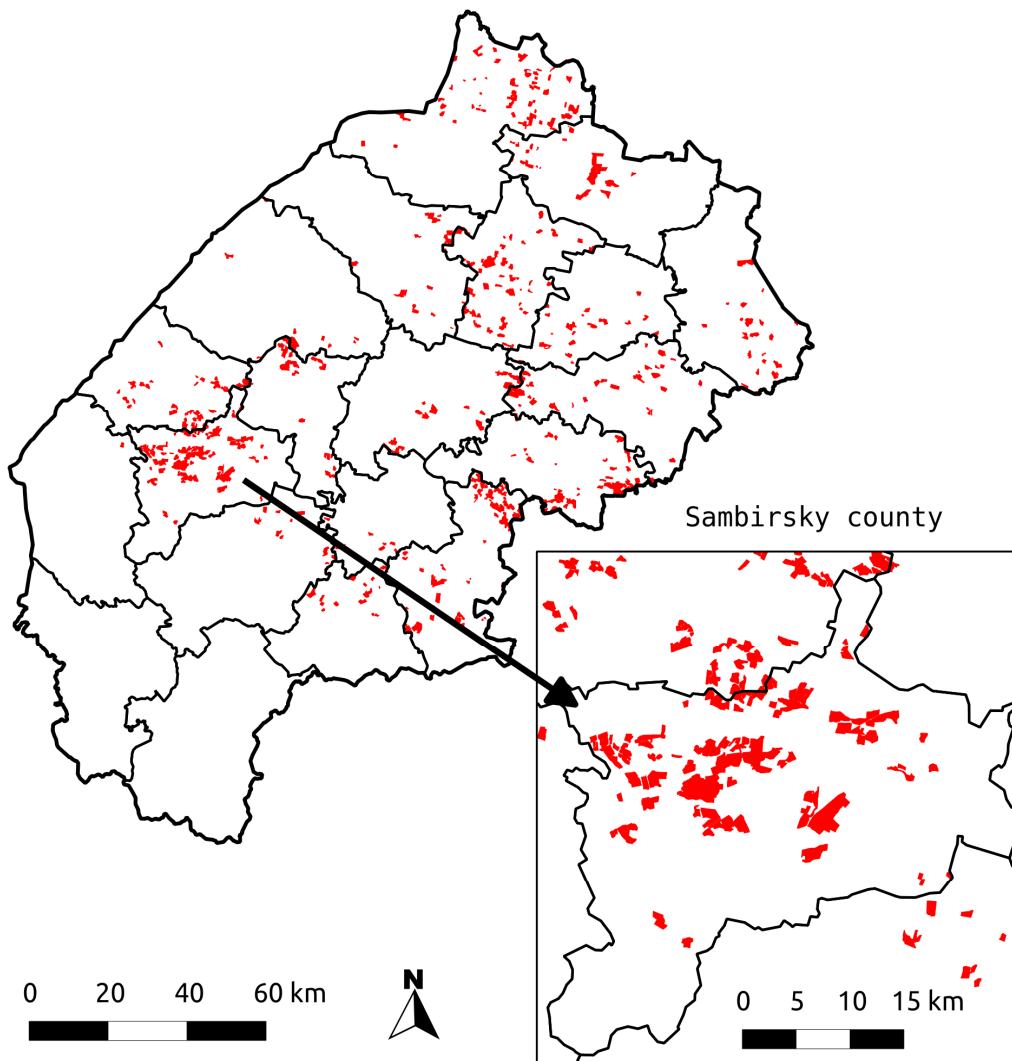
Oblast	Predicted yield for 22.04.2013, tonn / ha	Predicted yield for 08.05.2013, tonn / ha	Predicted yield for 23.05.2013, tonn / ha	Yield change between 23.05 and 08.05, tonn / ha
<i>Vinnyska</i>	4,4	4,5	4,3	-0,2
<i>Volynska</i>	3,0	3,0	3,2	0,2
<i>Dnipropetrovska</i>	4,3	4,1	3,3	-0,8
<i>Donetska</i>	4,0	3,8	3,5	-0,3
<i>Zhytomyrska</i>	3,0	3,3	3,3	0,0
<i>Zakarpatska</i>	3,0	3,0	3,0	0,0
<i>Zaporizka</i>	3,8	3,6	3,3	-0,3
<i>Ivano-Frankivska</i>	3,4	3,4	3,6	0,2
<i>Kyivska</i>	3,0	3,4	3,2	-0,2
<i>Kirovohradska</i>	3,9	3,8	3,1	-0,7
<i>Luhanska</i>	2,7	3,0	2,7	-0,3
<i>Lvivska</i>	3,4	3,4	3,5	0,1
<i>Mykolaivska</i>	3,7	3,5	2,6	-0,9
<i>Odeska</i>	3,5	3,6	2,8	-0,8
<i>Poltavska</i>	3,9	4,2	3,5	-0,7
<i>Rivnenska</i>	3,3	3,4	3,5	0,1
<i>Sumska</i>	2,8	3,4	3,2	-0,2
<i>Ternopil'ska</i>	3,6	3,6	3,8	0,2
<i>Kharkivska</i>	4,2	4,1	3,8	-0,3
<i>Khersonska</i>	3,6	3,5	2,6	-0,9
<i>Khmel'nytska</i>	3,7	3,4	3,7	0,3
<i>Cherkaska</i>	4,7	5,0	4,0	-1,0
<i>Chernivetska</i>	3,8	3,6	3,7	0,1
<i>Chernihivska</i>	2,7	3,4	3,3	-0,1
<i>Republic of Crimea</i>	3,1	3,0	2,1	-0,9





## Appendix 2.1

### Winter rapeseed map for Lvivska oblast in 2012





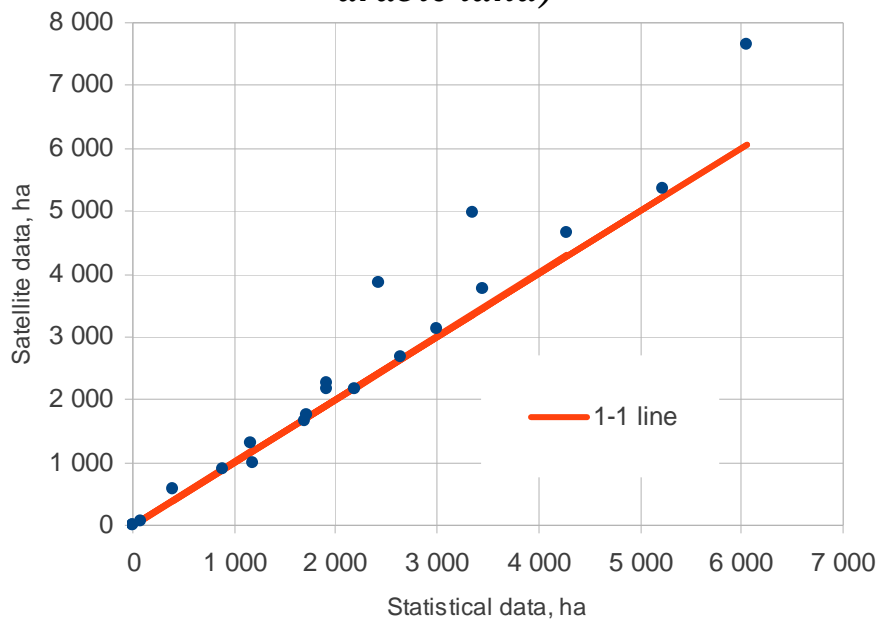


## Appendix 2.2

County	Rapeseed area, ha (statistical data)	Rapeseed area, ha (satellite data *)
Brodivskyi county	1 903	2 274
Buskyi county	1 698	1 663
Horodotskyi county	1 921	2 151
Drohobyskyi county	878	892
Zhydachivskyi county	5 216	5 354
Zolochivskyi county	1 722	1 748
Kamianka-Buzkyi county	3 450	3 755
Mostyskyi county	4 288	4 654
Zhovkivskyi county	398	580
Mykolaiivskyi county	2 647	2 686
Peremyshlianskyi county	2 428	3 850
Pustomytivskyi county	2 180	2 183
Radekhivskyi county	2 995	3 135
Sambirskyi county	6 058	7 660
Skolivskyi county	0	0
Sokalskyi county	3 347	4 965
Starosambirskyi county	78	74
Stryiskyi county	1 169	1 292
Turkivskyi county	0	0
Yavorivskyi county	1 182	999

\* For comparison with official statistics satellite assessment conducted within the land with agricultural purpose

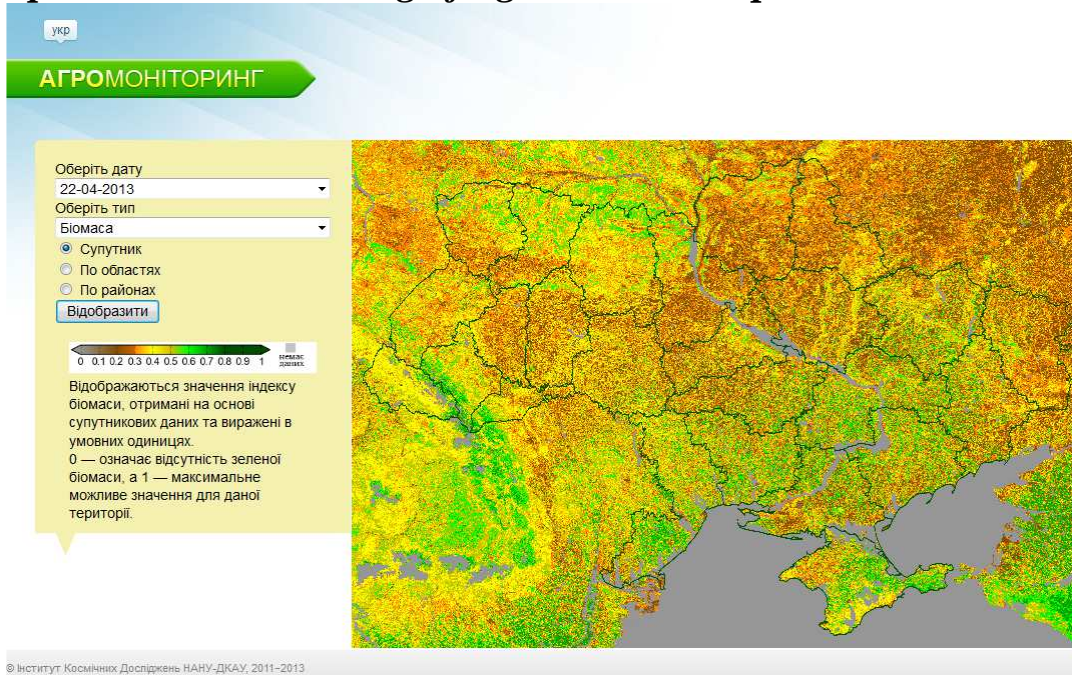
### Winter rapeseed area comparison for counties of Lvivska oblast (within arable land)





## Appendix 3

### Operational monitoring of agricultural crops state in Ukraine



### Crop state anomalies in Ukraine (deviations from the mean for the last ten years)

