

201311 Typhoon Haiyan / Super Typhoon Yolanda Data Sources

Geospatial Information and Remotely Sensed Imagery Products

November 13, 2013

Hazards Data Distribution System (HDDS)

<http://hdds.usgs.gov/hdds2/>

Select Event: "201311_Typhoon_Haiyan" → click on "+" and then "Search"

For pre-event reference imagery select "Include baseline data?" And "Include ad-hoc data?"

RSS available for HDDS-ingested data

http://hdds.usgs.gov/hdds2/feed/rss?event=201311_Typhoon_Haiyan

Notes:

1. You can download collection index shapefiles from:
https://hdds.usgs.gov/hdds2/pub/data/disaster/201311_Typhoon_Haiyan/shapefiles/
2. Top Level HDDS Directory:
https://hdds.usgs.gov/hdds2/pub/data/disaster/2013_Typhoon_Haiyan
3. Pre-event imagery is not index below
4. To follow HDDS links you may need to first login.

Landsat 8

https://hdds.usgs.gov/hdds2/search-results?batch=201311_Typhoon_Haiyan_USGS_LANDSAT8_Day_20131112

Two images from 12 November 2013



UNOSAT maps:

https://hdds.usgs.gov/hdds2/pub/data/disaster/201311_Typhoon_Haiyan/data/MAP_PRODUCTS/UNOSAT

HDDS Restricted

Self-Register for HDDS Restricted. <http://hdds.usgs.gov/hdds2>

If you have not registered on either EarthExplorer or HDDS, click the register button in the top right corner of the screen and go thru the registration process. Once registered, you will have access to EarthExplorer and HDDS download capabilities.

Questions on HDDS Contact: Rynn Lamb lamb@usgs.gov or Brenda Jones bkjones@usgs.gov

WorldView-1 (Acquired 11 November 2013)



WorldView-2 (Acquired November 10 and 11, 2013)



AD HOC "RESTRICTED"

US Government damage assessment:



https://hdds.usgs.gov/hdds2/disaster_restricted/201311_Typhoon_Haiyan/data/DAMAGE_ASSESSMENT/USG

End HDDS

Pacific Disaster Center

<http://www.pdc.org/>

<http://www.pdc.org/news-n-media/pdc-updates/Super-Typhoon-Haiyan-Heads-for-Vietnam-while-Agencies-Respond-in-the-Philippines/>

#YolandaPH: Typhoon Haiyan / Yolanda Incident Map



<http://www.arcgis.com/home/item.html?id=b5226c1f85954be0891b07ba43b6e952>

#YolandaPH: Map Tour by StandbyTaskForce and GISCorps (DHN Members)

<http://www.arcgis.com/apps/MapTour/index.html?appid=18ea32008c3f43a898096f4e30e85e79&webmap=dee921d4f2344e448b66c747f5f508f6&folderid=d6f13810af40480daeba32fd4ae7ea27>

Typhoon Haiyan/Yolanda Perspectives Map

<http://www.esri.com/services/disaster-response/hurricanes/typhoon-haiyan-yolanda-perspectives-map>

MapAction

<http://mapaction.maps.arcgis.com/apps/PublicGallery/index.html?appid=d396484319904cbfab7f5c622bc63a84&group=affa2d2e959d49df870a934f86f01b79>

SBTF Crisis Map of Yolanda Typhoon

<http://giscorps.maps.arcgis.com/apps/OnePane/basicviewer/index.html?appid=cf6031322a334cc3bfe3f9a74f23b384>

Rest Services

Schools and Hospitals (OSM):

http://services.arcgis.com/8ZpVMShClf8U8dae/arcgis/rest/services/OSM_Schools_and_Hospitals/FeatureServer/0

Urgent Need Tweets (GISCorps as of Nov. 10th PM):

http://services.arcgis.com/DO4gTjwJVIJ7O9Ca/arcgis/rest/services/Extract_Data_November_10_2013_1_30.1_PM/FeatureServer/0

Hot Spot Analysis on Urgent Need Tweets (GISCorps):

<http://services.arcgis.com/DO4gTjwJVIJ7O9Ca/arcgis/rest/services/YolandaPH>

Hot Spots Urgent Needs Test 1/FeatureServer/0???

Maximum Storm Surge (NOAA)

http://services.arcgis.com/DO4gTjwJVIJ7O9Ca/arcgis/rest/services/Yolanda_MaxStormSurge_NOAH/FeatureServer/0

Admin Boundaries:

http://services.arcgis.com/juzF6a1l6VeqedSj/arcgis/rest/services/Philippines_Administrative_Boundaries/FeatureServer/2

Storm Signal (Geodata Systems, Inc):

http://services.arcgis.com/eSGO1QW0IYo90eNU/ArcGIS/rest/services/PH_StormSignal/FeatureServer/0

Damage assessment layers (Copernicus / UNOSAT)

https://unosatgis.cern.ch/arcgis/rest/services/FL_2013/TC_20131108_PHL_20131110_Cop_damage_assessment_Tacloban/MapServer

Active Hurricanes (NOAA / NHC / CPHC/ JTWC):

http://tmservices1.esri.com/arcgis/rest/services/LiveFeeds/Hurricane_Active/MapServer

Weather Stations (NOAA)

http://tmservices1.esri.com/arcgis/rest/services/LiveFeeds/NOAA_METAR_current_wind_speed_direction/MapServer

Recent Hurricanes (NOAA / NHC):

http://tmservices1.esri.com/arcgis/rest/services/LiveFeeds/Hurricane_Recent/MapServer

Recent earthquake (USGS):

<http://tmservices1.esri.com/arcgis/rest/services/LiveFeeds/ShakemapsNT/MapServer>

KML

NEW

Evacuation Centers and Command Post (KML):

<http://mapsengine.google.com/map/kml?mid=zfD-SwJEq69w.k96lIRQ8cdnY&lid=zfD-SwJEq69w.kDOHf0CGjazc>

OpenStreetMap

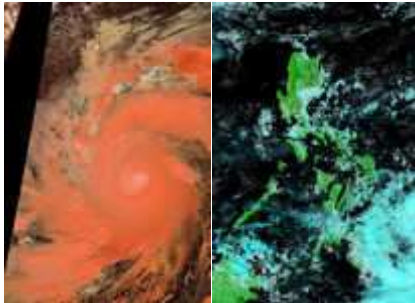
NEW

<http://www.openstreetmap.org/>

MODIS Lance Subset for Philippines

NEW

<http://lance-modis.eosdis.nasa.gov/imagery/subsets/?subset=Philippines>



Humanitarian Response Philippines

<https://philippines.humanitarianresponse.info/>

ReliefWeb Philippines

<http://reliefweb.int/country/phl>

Super Typhoon Yolanda (a.k.a. Haiyan)

<http://digitalhumanitarians.com/profiles/blogs/yolanda>

Joint Typhoon Warning Center (JTWC)

<http://www.usno.navy.mil/JTWC/>

Official Gazette for Philippines

<http://www.gov.ph/>

<http://www.gov.ph/2013/11/11/ndrrmc-typhoon-yolanda-report-per-province-november-11-2013/>

Send comments, additions, and corrections to:
Glenn Bethel, USDA Remote Sensing Advisor
glenn.bethel@usda.gov (202)720-1280