

An Intelligent Mobile Terminal Application -- Field Survey System for Disaster Management



Wang Wei , National Disaster Reduction Center of China

| Contents



- 1 Fast development of mobile internet and its application
- 2 MI enable New Business Logic in disaster managements
- 3 What does "Disaster Reporter" benefit?
- 4 Future visions

1

Fast *development* of mobile internet and its application



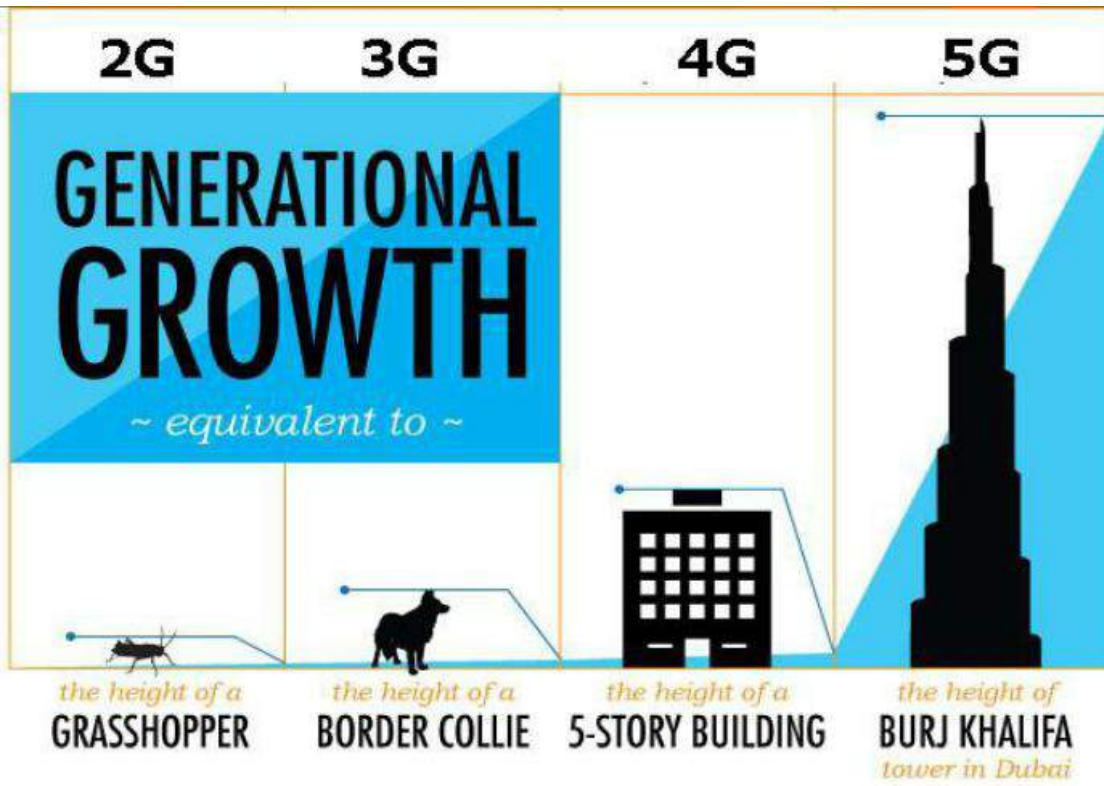
Mobile Internet is changing life...



5G is around the corner...

5G will close the distance of all things, realize the **intelligent interconnection** between man and all things on earth.

5G will penetrate into all areas of the society in the future, constructs an **all-wave customer-focus** information ecology system.

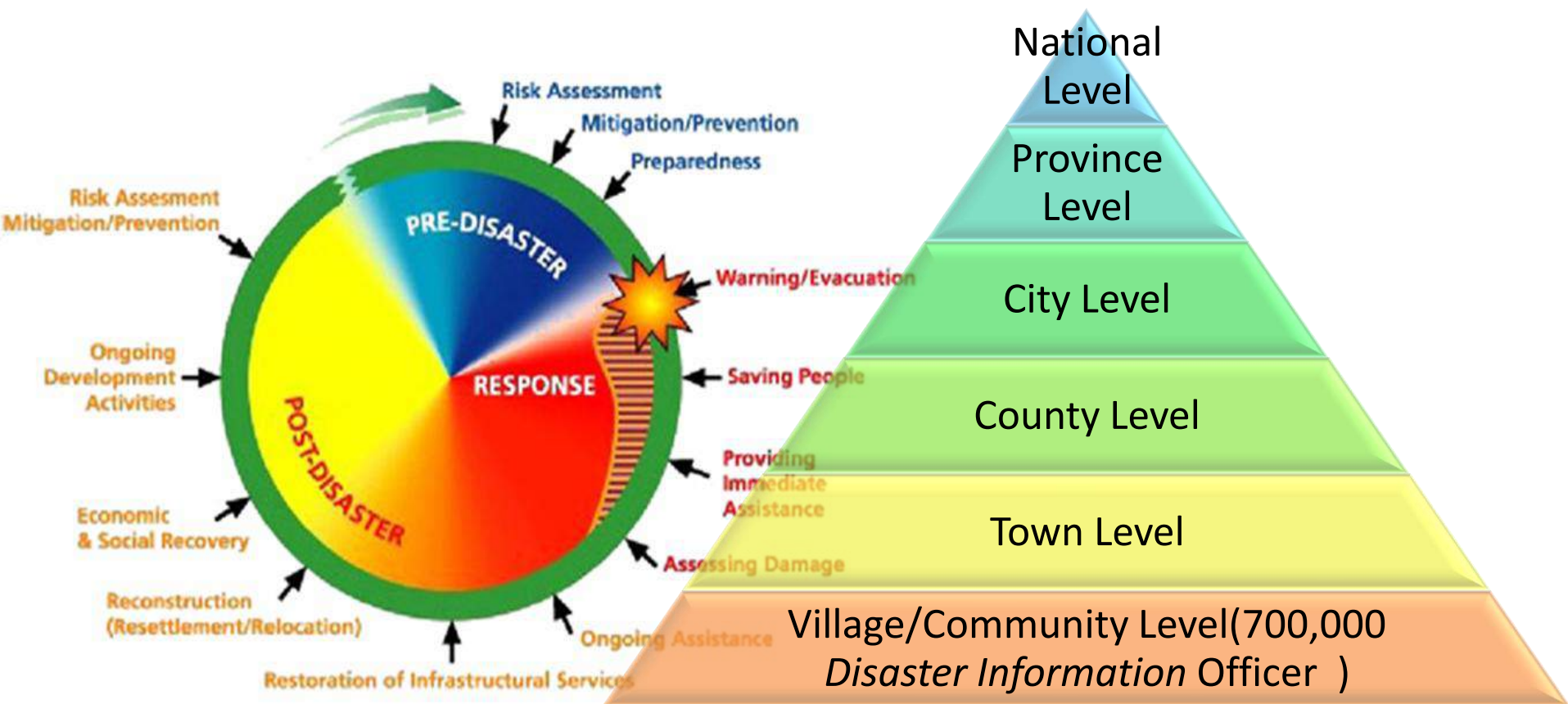


2

MI enable New Business Mode in disaster managements



Disaster Management Cycle and Stakeholders in China



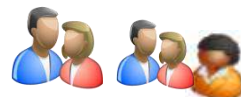
Disaster Management Cycle and Stakeholders in China



Disaster Affected people



**Volunteers/
Organization**

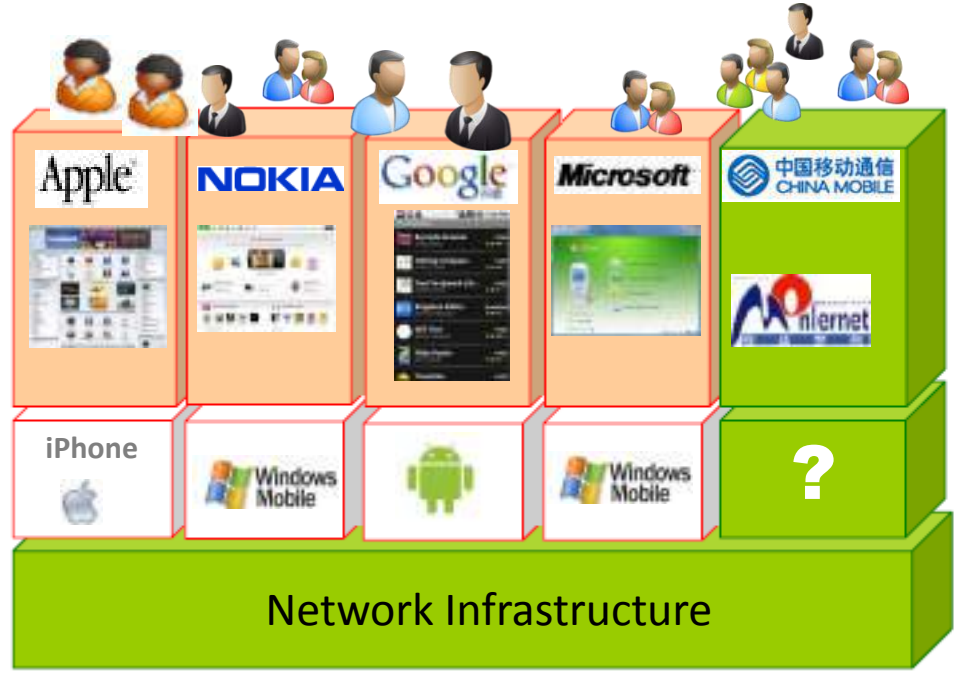
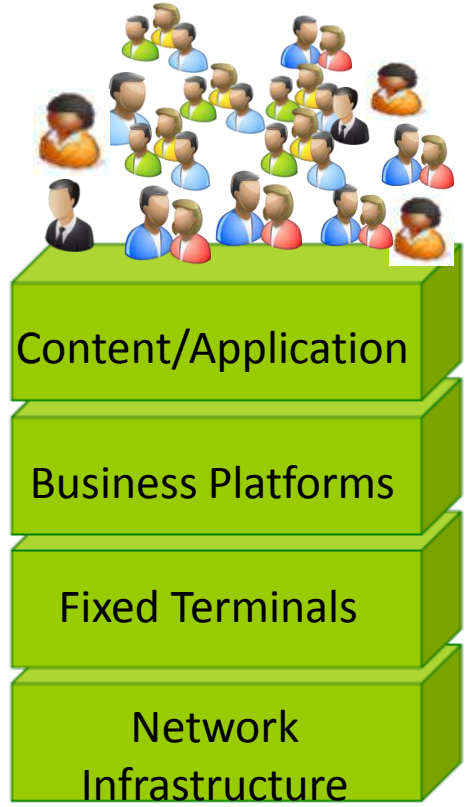


Social Public

Mobile Internet Enables New Business Mode

Last Mile Problem:
firsthand information collection
end information service

ubiquitous network society:
anytime
anywhere
anyone/anything

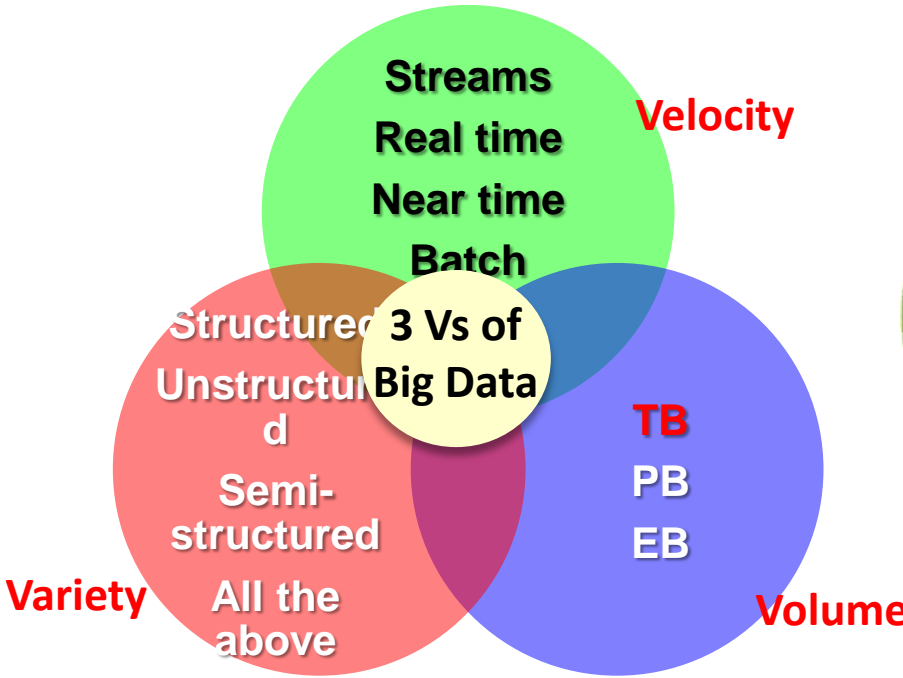


Traditional operation model

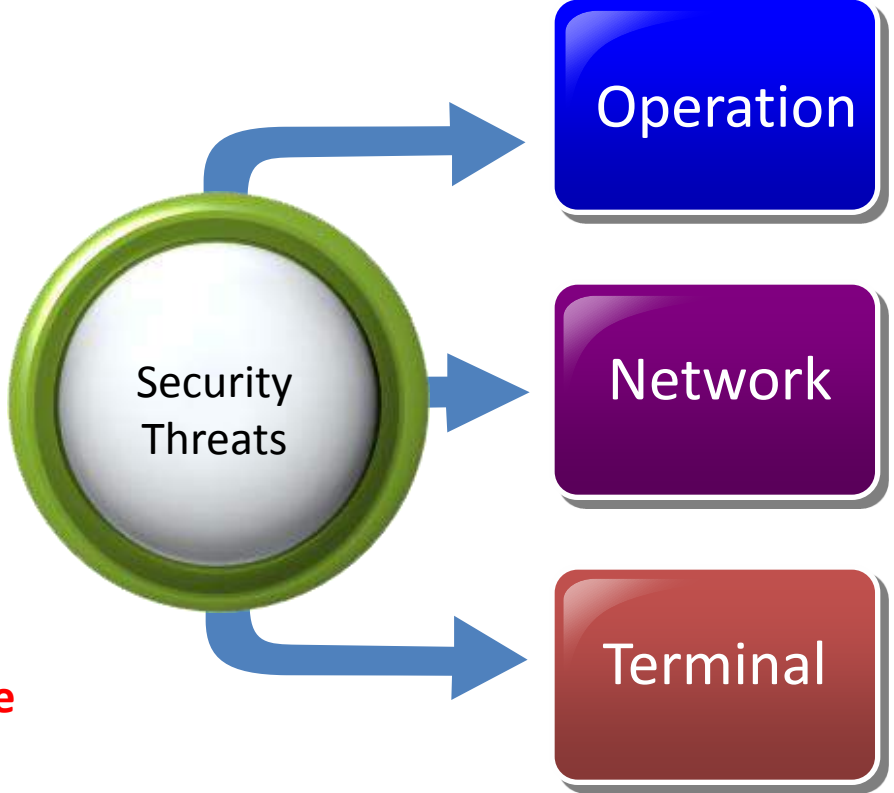
Mobile internet operation model

Challenges of the New Business Mode

Big Data challenges



Security challenges



3

What does “Disaster Reporter”
Benefit?



Introduction of "Disaster Reporter"



综合减灾 全国防震减灾信息系统

序号	名称	地址	电话	联系人	备注	更新时间	发布状态	审核状态
1	11111	11111	11111	11111		11111	1	1
2	11111	11111	11111	11111		11111	1	1
3	11111	11111	11111	11111		11111	1	1
4	11111	11111	11111	11111		11111	1	1
5	11111	11111	11111	11111		11111	1	1
6	11111	11111	11111	11111		11111	1	1
7	11111	11111	11111	11111		11111	1	1
8	11111	11111	11111	11111		11111	1	1
9	11111	11111	11111	11111		11111	1	1
10	11111	11111	11111	11111		11111	1	1



综合减灾 全国防震减灾信息系统

序号	名称	地址	电话	联系人	备注	更新时间	发布状态	审核状态
1	11111	11111	11111	11111		11111	1	1
2	11111	11111	11111	11111		11111	1	1
3	11111	11111	11111	11111		11111	1	1
4	11111	11111	11111	11111		11111	1	1
5	11111	11111	11111	11111		11111	1	1
6	11111	11111	11111	11111		11111	1	1
7	11111	11111	11111	11111		11111	1	1
8	11111	11111	11111	11111		11111	1	1
9	11111	11111	11111	11111		11111	1	1
10	11111	11111	11111	11111		11111	1	1

Target Users:

- Disaster Field Investigator
- Disaster Information Officer
- Social Public



Introduction of "Disaster Reporter"

- Data Management
- Demonstration
- Data Mining

- Multimedia Data collection/reporting
- Track recording
- Field collaboration
- Navigation



综合减灾空间数据协同采集服务 (Web)

Task Planning

Fine Mode

Rapid Mode

Tracing Mode

Field

创建任务

选择现场工作组人员

选择地图包、工作图层及业务表单

Tasks

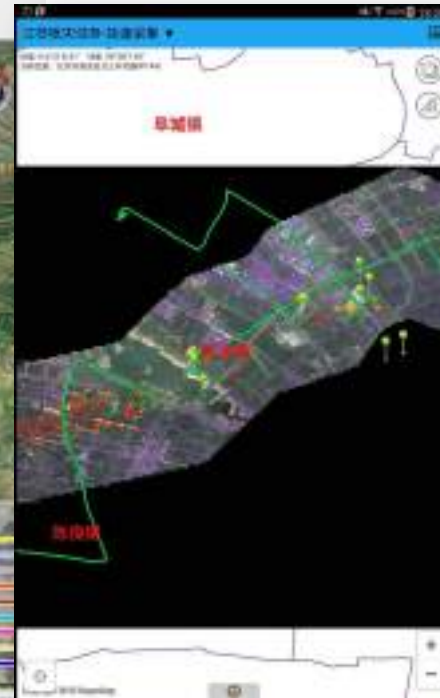
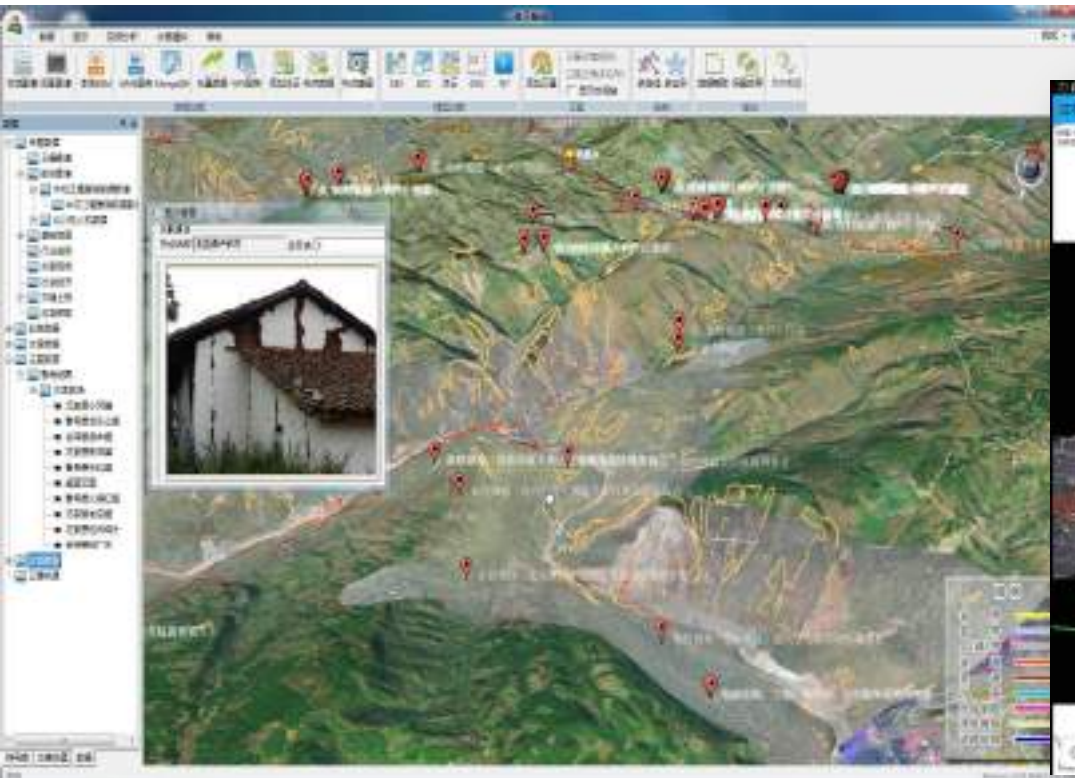


Field Information Collection

Three Business Logic: Fine Mode

Disaster Field Investigator, for fine assessment of the disaster loss

- Use High resolution Remote Sensing Image
- Collaborating with indoor interpreter



Three Business Logic: Rapid Mode

Disaster Information Officer, for quick reporting of disaster

- Quickly reporting and planning
- Understanding overall disaster situation
- Free online/offline map service



中国移动4G 11:10

public task-Rapid mode Save to local

Audio Picture Text Map

Town(street) _____

Area name _____

Investigation unit _____

Housing structure type RC BC BW other

Number of rooms C + -

Number of storeys 1 2 3

Average cost 0

area per room 0

Number of collapse C + -



Disaster reporting

Three Business Logic: Tracing Mode

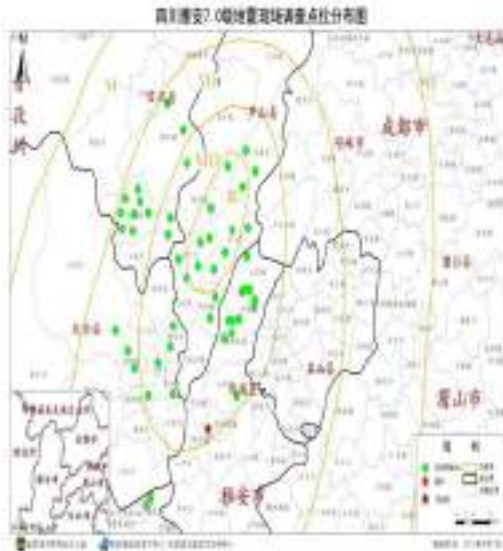
Social Public, for quick reporting of disaster

- Integrated multi media information collection
- Quick Reporting
- Free online/offline map service

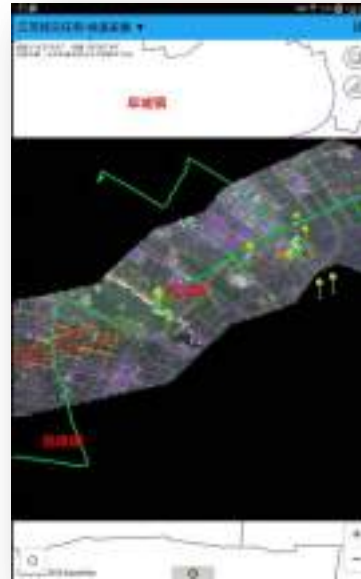


Disaster reporting

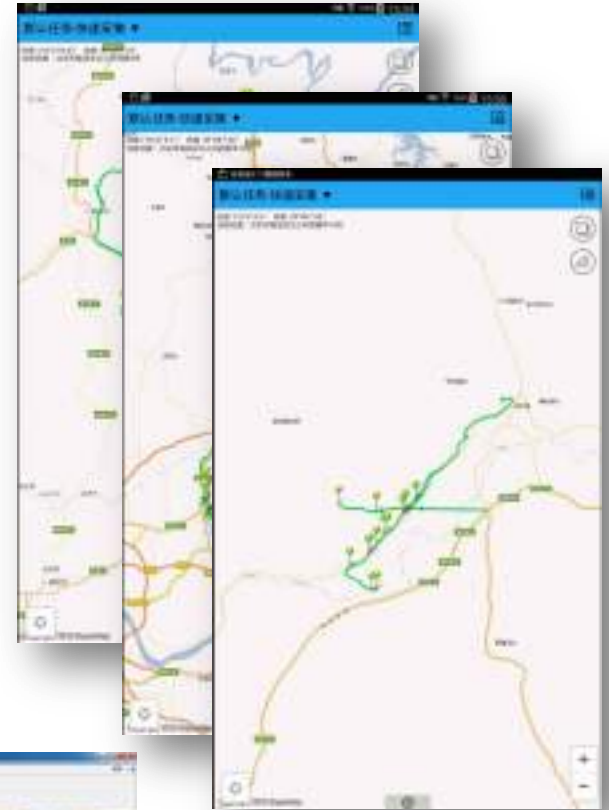
Applications in Disaster Assessment and Relief



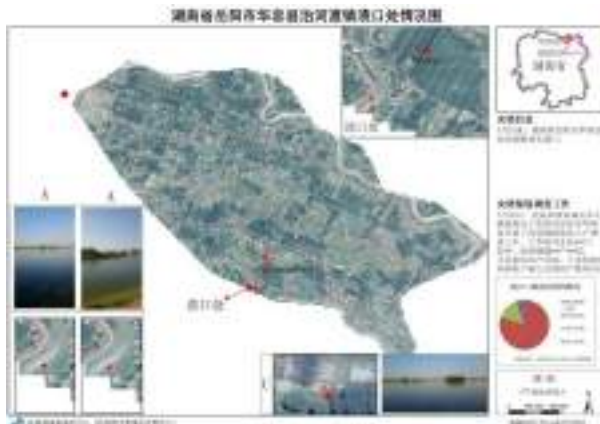
Lushan Earthquake Assessment in 2012



Jiangsu Tornado Assessment in 2016



Disaster Loss Reporting in 2016



South-China Flood Assessment in 2014

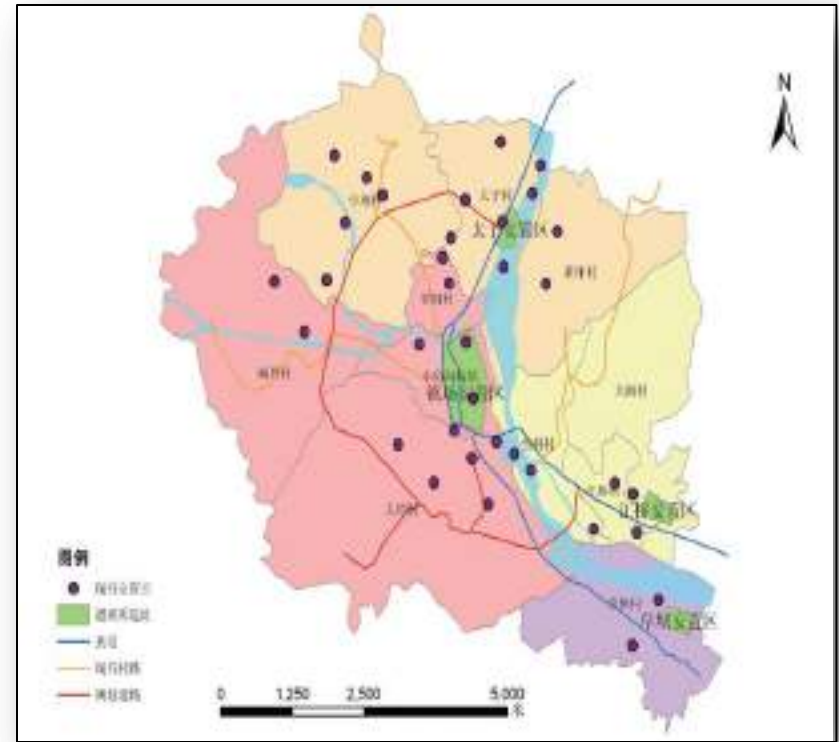
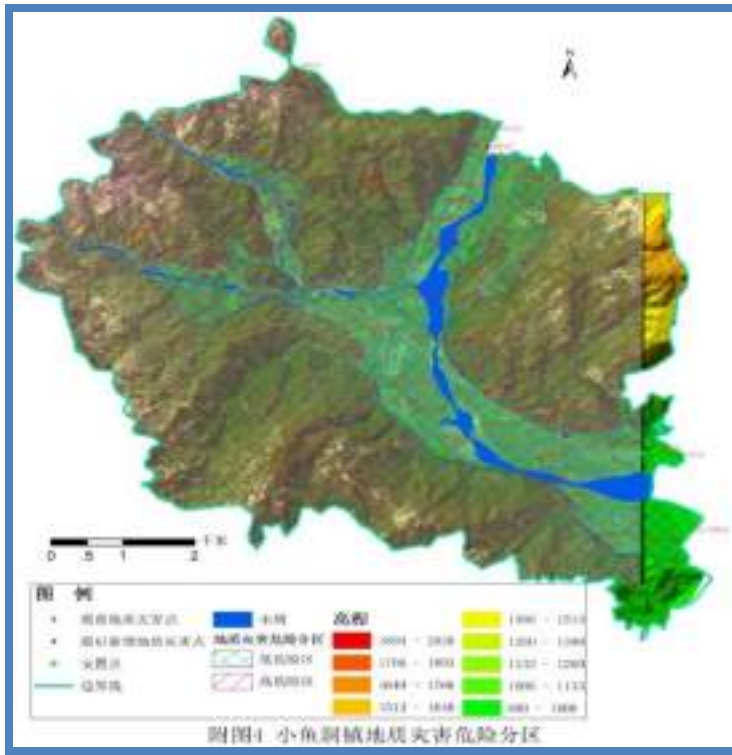


Ludian Earthquake Assessment in 2014

4

Future Visions





1

Community -based Disaster Risk Management

2

Big Data Application

3

Security Concerns

Thanks for your attention

Wang Wei

wangwei@ndrcc.gov.cn; 732196152@qq.com

+8613693311777

+861052811199(Tel);

+861052811190 (Fax)