



IWMI and DMC in close association with Sentinel Asia System (SAS) and JAXA activated the charter on October 1, 2015 to provide satellite images covering the Southern Provinces. SAS quickly provided images of 30 September 2015 and 1st October 2015 for its use in emergency response and relief operation. IWMI using the IFMAN tool processed the flood extent covering the districts of Hambantota, Galle, Matara, Monaragala and Ratnapura.

In total an area of 365 sq.km were inundated as viewed by ALOS PALSAR Satellite images taken on 30 September 2015. Approximately 150sq.km of paddy fields were flooded. The data sources from Survey Department of Sri Lanka was used for this analysis purpose. Major flooded affected divisions are Hambantota, Tanamalwila, Lunugamwehara, Tissamaharama, Wellawaya and Embilipitiya. In terms of major paddy field affected division's area Hambantota, Tanamalwila, Tissamaharama, Lunugamwehara and Tangalla. For the ALOS PALSAR-2 images taken on 1st October 2015, the affected districts are mainly the Matara and Galle. The divisions that includes Thihagoda, Kamburupitiya, Malimbada, Akuessa, Mulatiyana. In total 15 divisions were affected with a maximum inundation of 89sq.km of which paddy fields affected area is 47sq.km. The division with paddy field affected areas are Thihagoda, Malimbada, Kamburupitiya.

Legend

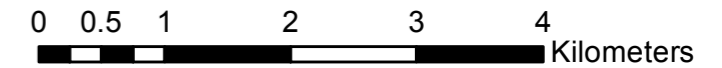
Before Disaster Image: ALOS PALSAR 2
Date : 18 Feb. 2015
After Disaster Image : ALOS PALSAR 2
Date : 30 Sept.2015

- Flood Extent (30 Sept 2015)
- Permanent Water bodies
- Division Map
- Cities/Town
- Road
- Streams

Map Prepared by:

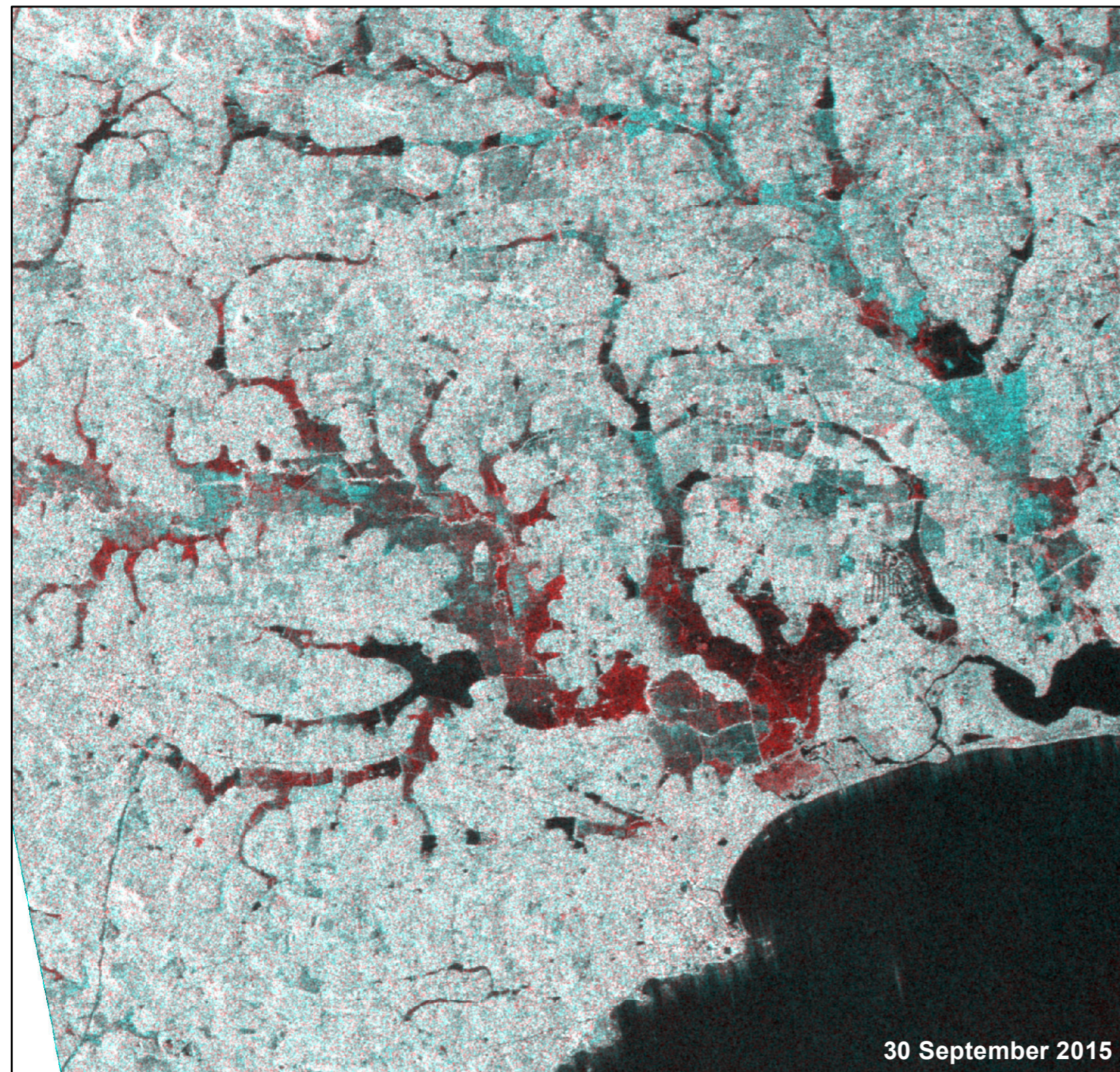


Data Provided by:



The analysis excluded permanent water bodies including reservoir, tanks and ponds and this reflects only the inundation extent. Please note the surface water extent mapped has not yet been validated in the field.

The depiction and use of boundaries, geographic names and related data shown in these maps are based on the sources they have been drawn from and quoted. These are neither error-free nor do they imply official endorsement or the position of IWMI.



30 September 2015

