



UNITED NATIONS  
Office for Outer Space Affairs



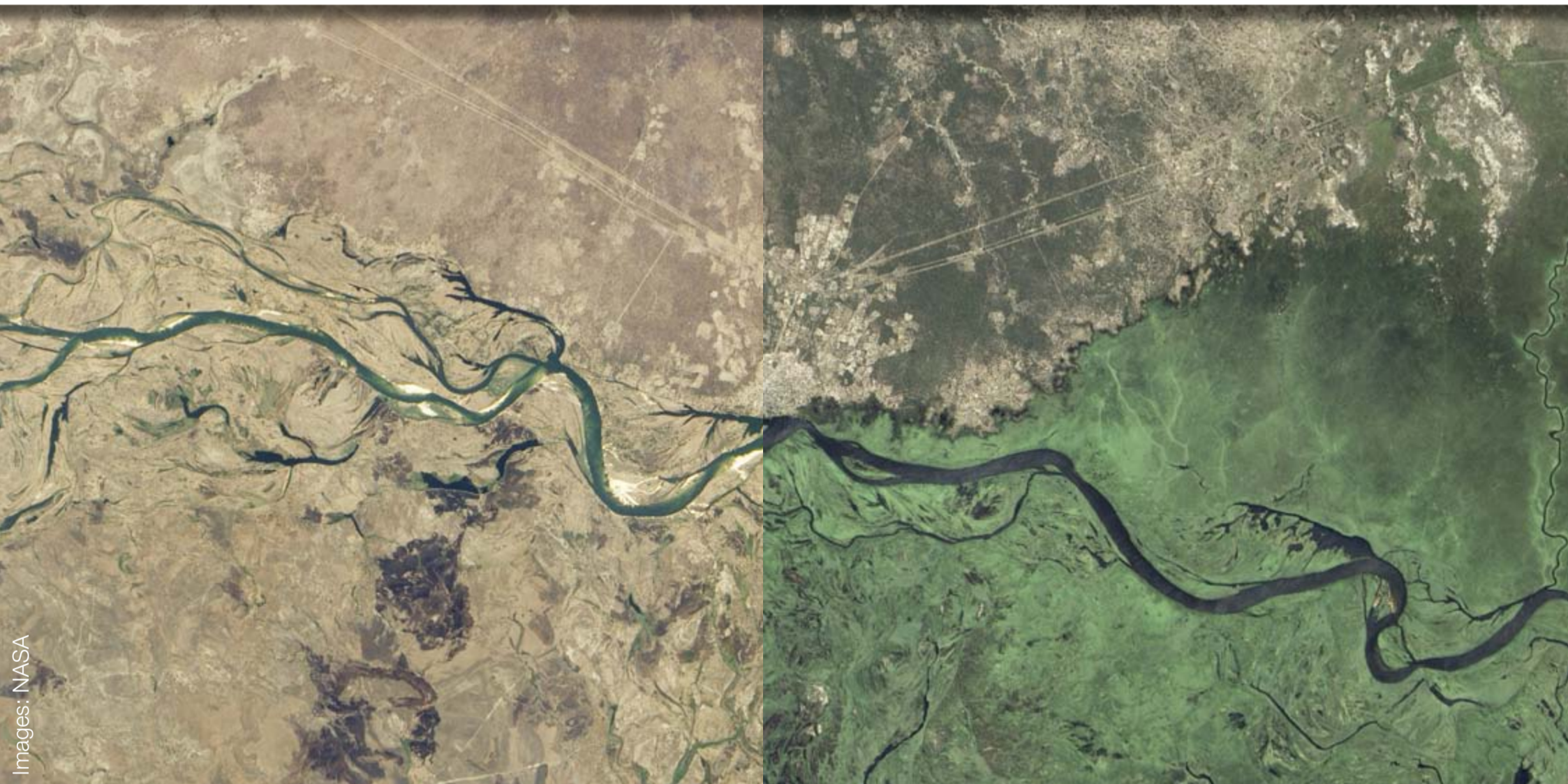
Federal Ministry  
for Economic Affairs  
and Energy



**United Nations/Germany Expert Meeting**

# **Space-Based Information for Flood and Drought Risk Reduction**

**5-6 June 2014 Bonn, Germany**



**Useful information for participants**

with the support of



# Welcome to Bonn

## A hub of international synergies



known by its nickname “Tall Eugene – Langer Eugen” (named after the first name of a former President of Parliament). Sixteen of the seventeen UN units residing in Bonn are assembled under its roof. Another, older parliamentary office building across the street from “Langer Eugen” is currently being rebuilt as an ecological pilot project to accommodate the UN Climate Secretariat (UNFCCC).

With the experience, structures and competences of 50 years of governmental responsibility, the city of Bonn was destined for its new role as an international scientific and communication centre after Berlin became Germany’s capital again in 1990. Today, Bonn fulfills that role with numerous UN organisations, federal ministries and subordinate authorities, development organisations and non-governmental organisations with international orientation that constitute a strong international network in Bonn.

Over the past decade, Bonn has managed to shape a new profile as the German City of the United Nations and a centre of international dialogue on key issues of the future. The Bonn UN Campus is a visible symbol of this development. Since July 1996, Bonn is entitled to call itself a UN City. Ten years later, in July 2006, Federal Chancellor Angela Merkel handed over the new branch office of the United Nations to UN Secretary General Kofi Annan. The Federal Government has invested EUR 55 million into refurbishing the high-rise building which used to accommodate offices of members of parliament and is widely

“The UN in Bonn - for sustainable development worldwide”: this is the common denominator of the UN units in Bonn. The UN Campus provides ideal working conditions and an environment rich in synergies. A special advantage is the close distance to the International Congress Centre and to many other important partners. This is an excellent environment for co-operative action and for ad hoc networking. UN organisations, Federal Ministries and Federal Agencies, about 150 Non-Governmental Organisations, Research Institutions and the resident economic Global Players determine the character of Bonn as an international location. Increasingly, the city is turning into a hub of a network whose actors focus on the issues of sustainable and humane development.

Further information is available at:

[http://www.bonn.de/wirtschaft\\_wissenschaft\\_internationales/uno-stadt/?lang=en](http://www.bonn.de/wirtschaft_wissenschaft_internationales/uno-stadt/?lang=en)

# Venue

## Where we are and how you find us

The expert meeting will be held at the UN Campus – Langer Eugen. It offers excellent conferencing facilities, as well as a canteen with international cuisine. Additional rooms will be accessible for parallel sessions and discussion groups.

Postal Address:

UN-SPIDER  
UN Campus  
Platz der Vereinten Nationen 1  
53113 Bonn

**By air:**

from Cologne/Bonn airport (Flughafen Köln/Bonn):

- Airport-shuttle-bus No 670 towards Bonn Hauptbahnhof (Central Station)
- Underground (U-Bahn) line 16, 63 or 66 direction Bad Godesberg/Königswinter
- “Heussallee/Museumsmeile” stop, exit station direction “Deutsche Welle”
- When you reach the street go straight ahead until you reach Hermann-Ehlers-Str. and the UN Campus

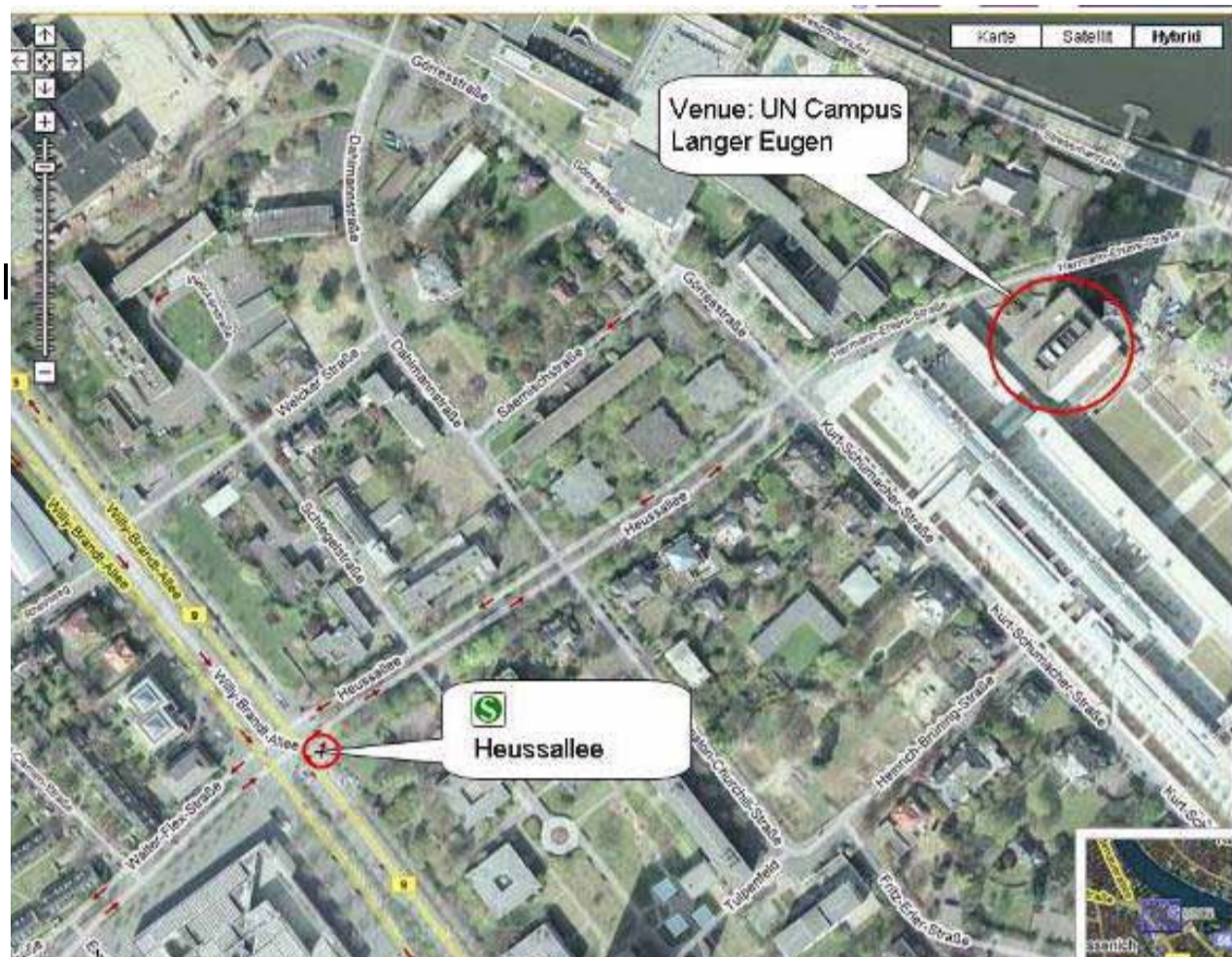
The airport is well connected to the city centre by Airport-shuttle-bus SB60 leaving from Terminal 2 every twenty minutes (a single ticket is 10.50 EUR and is valid for the tram as well if you immediately continue your trip). It is also possible to rent a car or take a taxi, of course. The distance between airport and Central Station is around 30 km. Please check the following webpage on more information about Bonn/Cologne Airport:

<http://www.koeln-bonn-airport.de/index.php>

**By railway/underground:**

from Bonn Hauptbahnhof/Central Station:

- Underground (U-Bahn) line 16, 63 or 66 towards Bad Godesberg/Königswinter (a single ticket - category 1b - is 2.80 EUR )
- “Heussallee/Museumsmeile” stop, exit station direction “Deutsche Welle”
- When you reach the street go straight ahead into Heussallee until you reach the UN Campus



## By car:

If you come by car, use a route planner to find your way to the UN premises and to your hotel, for example [maps.google.com](http://maps.google.com).

### Coming from the North (Frankfurt/Hannover/Ruhrgebiet):

- A3 motorway to Bonn/Siegburg intersection
- A560 motorway towards Bonn until St. Augustin junction
- A59 motorway towards Bonn-Bad Godesberg until Bonn-Ost (42) intersection
- A562 motorway, keep right until exit (Anschlussstelle) Bonn-Rheinaue
- Turn right onto Petra-Kelly-Allee towards Bonn-Rheinaue
- Turn right onto Charles-de-Gaulle-Straße
- The UN Bonn Campus is located at the end of the street on the left



### Coming from the South-West of the Rhine:

- A61 motorway until Meckenheim intersection
- A 565 motorway towards Bonn
- Poppelsdorf exit, towards Bad Godesberg (B9)
- After “Reuterbruecke”-Bridge keep right and follow the road to the right into Adenauerallee
- Take the first left into Welckerstraße
- At the 3-way intersection turn right into Karl Carstens Straße
- At the next intersection turn left into Heussallee
- The main entrance of the UN Bonn Campus is right ahead at the end of the street
- To park your car at Charles-de-Gaulle-Straße take a right into Kurt-Schumacher-Straße
- At the next intersection, continue straight ahead into Sträßchensweg
- Follow the street and at the next red light continue straight ahead into Charles-de-Gaulle-Str.

**Note for Visitors:** There is hardly any possibility to park your car directly at the UN Campus. However, if required, you can leave your car on one of the parking areas you pass along the Charles-de-Gaulle-Straße.

# Hotel Information

## Where you can stay

For certain hotels in Bonn special UN discounts/prices are offered. We strongly recommend booking your room as soon as possible. Please contact the hotel directly to make your reservation informing them that you are a participant of a United Nations Expert Meeting in order to receive the rates below and mention the booking code where indicated. Breakfast and taxes are included in the prices unless stated differently.

More hotels:

<http://www.bonn-region.de/english/hotels.html>



| Hotel   | Rates  | Booking Contact  |
|---|--|--|
| 1) Hotel Rheinland<br>Berliner Freiheit 11<br>53111 Bonn        | 68€EUR / single room<br>84€EUR/ double room  | Michael Wolff<br>info@rheinland-hotel.de<br><a href="http://www.rheinland-hotel.de">www.rheinland-hotel.de</a>   |
| 2) Boarding House BONNOX<br>In der Raste 5-7<br>53129 Bonn      | 79 EUR / single room<br>85€EUR / double room<br>Breakfast/night: 9€<br>Booking code: UNO-2014                  | Michael Wolff<br>reception@bonnox.de<br>Tel: +49/228/92667808<br>Fax: +49/228/92667809<br><a href="http://www.bonnox.de">www.bonnox.de</a>                     |
| 3) Guennewig Hotel Bristol<br>Prinz-Albert-Str. 2<br>53113 Bonn | 106€EUR / single room<br>136€EUR / double room   | Mauren Off<br>Off@guennewig.de<br>Tel: +49/228/26980<br><a href="http://www.guennewig.de/bnbristo">www.guennewig.de/bnbristo</a>                               |
| 4) Guennewig Hotel Residence<br>Kaiserplatz 11<br>53113 Bonn    | 106€EUR / single room<br>136€EUR / double room   | Mauren Off<br>Off@guennewig.de<br>Tel: +49/228/26970<br><a href="http://www.guennewig.de/bnreside">www.guennewig.de/bnreside</a>                               |
| 5) Hotel Königshof<br>Adenauerallee 9<br>53111 Bonn             | 125€EUR / Single room<br>140€EUR / Superior Single room<br>170 EUR / Superior Double room<br>Booking Code "UN" | Karen Lichius<br>info@hotel-koenigshof-bonn.de<br>Tel: +49/228/2601510<br><a href="http://www.hotel-koenigshof-bonn.de/de">www.hotel-koenigshof-bonn.de/de</a> |

| Hotel   | Rates  | Contact   |
|---|--|---|
| 6) Hotel MY Poppelsdorf<br>(Ameron)<br>Wallfahrtsweg 4<br>53115 Bonn            | 78 EUR / Standard single<br>98 <del>€</del> EUR / Standard double<br>for one<br>Booking Code "UN"  | Karen Lichius<br>info@mypoppelsdorf.com<br>Tel: +49/228/26 91 0<br>Fax: +49/228/26 10 70<br><a href="http://www.mypoppelsdorf.com">www.mypoppelsdorf.com</a>  |
| 7) Derag Hotel and living /<br>Hotel Kanzler<br>Adenauerallee 148<br>53115 Bonn | 108.50 <del>€</del> EUR / Economy Sin-<br>gle<br>118.50 <del>€</del> EUR / Economy Dou-<br>ble<br>133.50 <del>€</del> EUR / Business Dou-<br>ble<br>148.50 <del>€</del> EUR / Superior Dou-<br>ble<br>Booking Code: UN2014 | Michael Gottlieb<br>res.ka@derag.de<br>Tel: +49/228/68440<br>Fax: +49/228/6844180<br><a href="http://www.deraghotels.de/hotels-bonn/hotel-kanzler-bonn.html">www.deraghotels.de/hotels-bonn/hotel-kanzler-bonn.html</a> |
| 8) Insel Hotel<br>Theaterplatz 5-7<br>53177 Bonn                                | 87 EUR / Single Room<br>110 <del>€</del> EUR / Double Room<br>105 EUR / Deluxe Single<br>Room<br>125 <del>€</del> EUR/Deluxe Double Room<br>Booking Code: UN   | Alexej Samoilow<br>reservierung@inselhotel.com<br>Tel: +49/228/35000<br>Fax: +49/228/3500333<br><a href="http://www.inselhotel.com">www.inselhotel.com</a>  |
| 9) Best Western Hotel Kaiser-<br>hof<br>Moltkestr. 64<br>53173 Bonn             | 89 EUR / Single Room<br>105 EUR / Double Room  | Jürgen Denzel<br>info@kaiserhof.bestwestern.de<br><a href="http://www.kaiserhof.bestwestern.de">www.kaiserhof.bestwestern.de</a>  |

# Public transportation

## How you reach us from your hotel

It is easy to get around in Bonn as its public transport is well developed. You can choose between suburban trains (S-Bahn), subway (U-Bahn), trams and buses. You can find out about the quickest way to get from A to B on one of two electronic itinerary planners by typing in an address or a stop:

[en.swb-busundbahn.de/](http://en.swb-busundbahn.de/)

[www.vrsinfo.de/englisch](http://www.vrsinfo.de/englisch)

[www.bahn.de](http://www.bahn.de)

There are several ticket options for using public transport within Bonn.

Zone K: For getting from U-Bahn stop “Universität/Markt” to the conference location (Stop “Heussallee”) or any other journey with four stops or less, you will need a ticket for Zone K (short distance tickets, valid for max. 4 stops). A single ticket for Zone K is 1.90 EUR, a 4-trip ticket is 7 EUR.

Zone 1b: From “Bonn Hauptbahnhof” (Central Station) to the venue and any other stop within Bonn more than 4 stops away from “Heussallee” you will need a ticket for Zone 1b. A single ticket for Zone 1b is 2.80 EUR. You can also buy day-tickets (7.80 EUR for category 1b) or purchase 4-trip tickets (“4er Ticket”, 10.10 EUR for category 1b).

For more information on tickets visit

<http://www.vrsinfo.de/englisch/tickets-and-tariffs/short-term-tickets/single-ticket.html>



# Visa Application

## Advice and information on getting your visa

Participants from some countries are required to apply for a visa before coming to Bonn. On the following webpage you can find out whether you will need a visa to attend the expert meeting.

[http://www.auswaertiges-amt.de/EN/EinreiseUndAufenthalt/StaatenlisteVisumpflicht\\_node.html](http://www.auswaertiges-amt.de/EN/EinreiseUndAufenthalt/StaatenlisteVisumpflicht_node.html)

The next webpage gives general advices for visa applications. You can download the application forms in several languages on this webpage as well.

[http://www.auswaertiges-amt.de/EN/EinreiseUndAufenthalt/Visabestimmungen\\_node.html](http://www.auswaertiges-amt.de/EN/EinreiseUndAufenthalt/Visabestimmungen_node.html)



You will need to send your application to the mission/consulate responsible for the country you are from or where you have taken up permanent residency. Check the following webpage for location and address for the missions/consulates that are of relevance for you.

[http://www.auswaertiges-amt.de/EN/Laenderinformationen/DtAuslandsvertretungenA-Z-Laenderauswahlseite\\_node.html](http://www.auswaertiges-amt.de/EN/Laenderinformationen/DtAuslandsvertretungenA-Z-Laenderauswahlseite_node.html)

When applying for your visa, please make sure to provide:

- a passport that is valid for at least another three months
- a valid health insurance coverage for your stay in Germany (even if you already hold a one-year or multiple-year visa)
- a copy of your invitation letter (clearly stating your name)
- a proof of financial resources to cover both your travel and your stay (also applicable for candidates who are partially funded)

Please make sure that you apply well in time and contact the mission/consulate by phone immediately in order to schedule an appointment.

If you need to submit any official documents regarding the event, please contact us. (See page 12 for contact details.)



# On the first day of the expert meeting

## Registration details



Registration will start Thursday, 5 June at 8:30 a.m. and will continue until 9 a.m. Please arrive in good time and bring with you your invitation letter, a valid identity card, passport or other identification document with a photograph. Security is commonly strict and only participants that arrive with their letter and their ID will be allowed to enter the UN Bonn Campus. Large bags will not be allowed into the building, but can

be stored at the entrance for the duration of your visit.

At registration you will receive a welcome package containing the programme and additional information on the expert meeting.

## Your health

### Where to get medical care

Please make sure that your health/life/travel insurance covers any medical treatments that might become necessary. **UNOOSA and its partners will NOT assume any responsibility for life and major health insurance, nor for expenses related to medical treatment or accidental events.** There are several general hospitals in Bonn. In case you need special medical assistance while you are attending the expert meeting, contact any of them to identify the one that is specialised in your medical condition.

Universitätsklinikum Bonn  
Sigmund-Freud-Straße 25 53105 Bonn Telefon 0228 / 287-0  
<http://www.ukb.uni-bonn.de>

Gemeinschaftskrankenhaus Bonn (Haus St. Elisabeth):  
Prinz-Albert Str. 40 53113 Bonn Telefon 0228 / 508-0 Fax 0228 / 508-1508  
<http://www.gk-bonn.de>

St. Marien-Hospital  
Robert-Koch-Straße 1 53115 Bonn Telefon 0228 / 505-0 Fax 0228 / 505-2019  
<http://www.marien-hospital-bonn.de>

# Currency

## How to pay and where to withdraw cash

In Germany, the currency - as in most European countries - is the Euro. Current exchange rate is 1 EUR - 1.39 US Dollar (as of 28/04/2014).

Bonn's banks and savings banks (Sparkassen) offer services to meet all of your banking needs, including foreign currency transactions, securities business and customer investment advice. All banks are under state supervision. Banking hours are generally 8 a.m. to 4 p.m. on workdays with a 1 ½ hour break for lunch. Most banks remain open until 6 p.m. on Mondays and Thursdays and close at 3 p.m. on Fridays. Most banks are closed on weekends. Automatic teller machines provide cash dispensing services to bank card holders 24 hours a day.

In most shops you will be able to pay with credit card and there are numerous cash machines throughout the town – including inside the UN building - where you can withdraw cash.

# Enjoying Bonn

## Tourist and leisure activities



In case you have some spare time on your hands, you might want to go for a little sightseeing tour in Bonn. The city offers various interesting sights and events for tourists.

You can go on guided tours by bus, by bike, on foot or even by limousine. The following webpage gives detailed information what types of sightseeing tours are available: <http://www.bonn-region.de/english.html>

Bonn offers several arts museums, ranging from medieval to contemporary art and many galleries. If you are an arts lover, you should check the following webpage for more information on the Bonn arts scene: <http://www.bonn-region.de/english/culture-art.html>

When it comes to sports Bonn offers something for all tastes and ages, from a relaxing walk at the foot of the Siebengebirge (a famous range of hills to the East of the river) to a marathon run.

[http://www.bonn.de/tourismus\\_kultur\\_sport\\_freizeit/sport\\_in\\_bonn/index.html?lang=en](http://www.bonn.de/tourismus_kultur_sport_freizeit/sport_in_bonn/index.html?lang=en)

For events like concerts, exhibitions, musical etc. check the following webpage:

[http://www.bonn.de/tourismus\\_kultur\\_sport\\_freizeit/bonn\\_ist\\_kultur/index.html?lang=en](http://www.bonn.de/tourismus_kultur_sport_freizeit/bonn_ist_kultur/index.html?lang=en)



Shopping in Bonn: Practically the entire city centre is a pedestrian shopping centre. Between the railway station, the City Hall (Stadthaus), the Old Town Hall and Sterntor gate you can stroll from shop to shop, whether in large department stores, in clothing shops or in speciality shops of all kinds (fashion, high-tech, electronics, jewellery, sports equipment, delicatessen etc.). In the pedestrian zone and the shopping malls (Kaiserpassage, Cassius-Passage, Stern-Passage and Friedensplatz-Passage) you will find a shopping paradise, dotted with quaint peaceful squares with many cafés and restaurants. You will also find nice and varied shopping centres and pedestrian precincts in the other districts of Bonn (Bad Godesberg, Beuel, Hardtberg).

Opening hours of shops differ, but are roughly from 9 a.m. to 8 p.m. Outside the city centre, smaller shops may only be open in the mornings on Saturdays.

More useful information on Bonn for international visitors is also available here:

<http://www.bonn-international.org/>

**Office of Tourist Information:**

Windeckstraße 1 / near Münsterplatz

53111 Bonn

Tel.: +49 2 28 / 77 50-00 or 19433 Fax: +49 2 28 / 77 50-77

[bonninformation@bonn.de](mailto:bonninformation@bonn.de)

[http://www.bonn.de/tourismus\\_kultur\\_sport\\_freizeit/tourist\\_information\\_aktuell/index.html?lang=en](http://www.bonn.de/tourismus_kultur_sport_freizeit/tourist_information_aktuell/index.html?lang=en)

# Questions?

Get in touch with us!

Antje HECHELTJEN (Ms)  
UNOOSA/UN-SPIDER  
United Nations Office in Bonn  
Tel: +49-815 0677  
Fax: +49-8150699  
E-mail: [antje.hecheltjen@unoosa.org](mailto:antje.hecheltjen@unoosa.org)

Anne PUSTINA (Ms)  
UNOOSA/UN-SPIDER  
United Nations Office in Bonn  
Tel: +49-815 0683  
Fax: +49-8150699  
E-mail: [anne.pustina@unoosa.org](mailto:anne.pustina@unoosa.org)

We are looking forward to welcoming you in Bonn!

