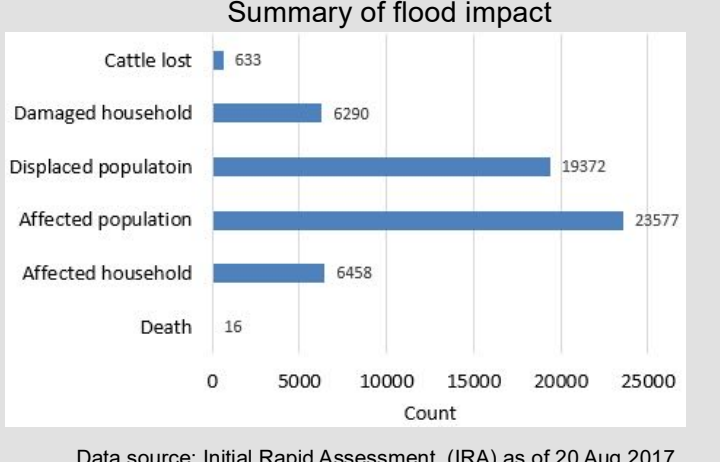
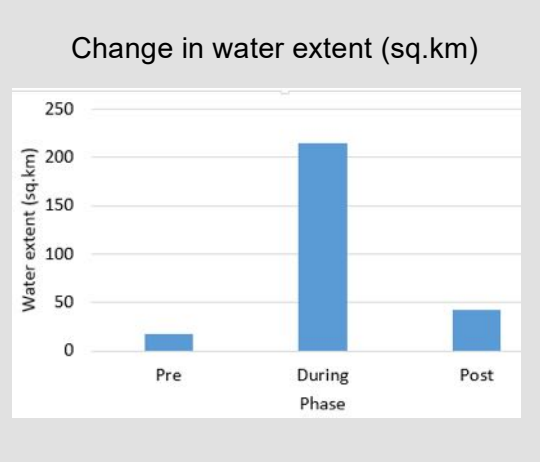
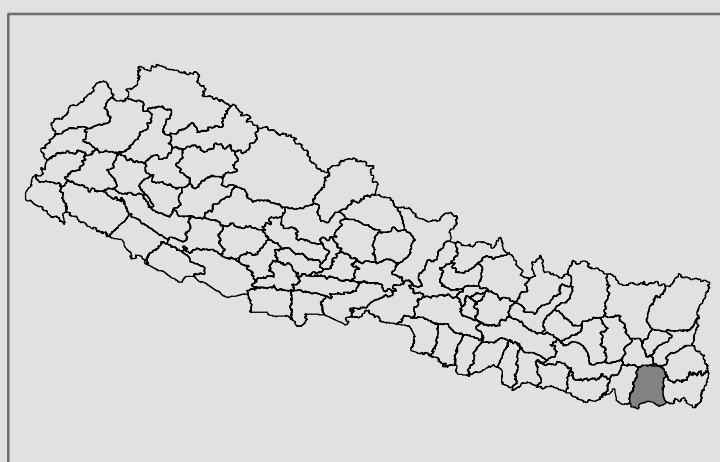
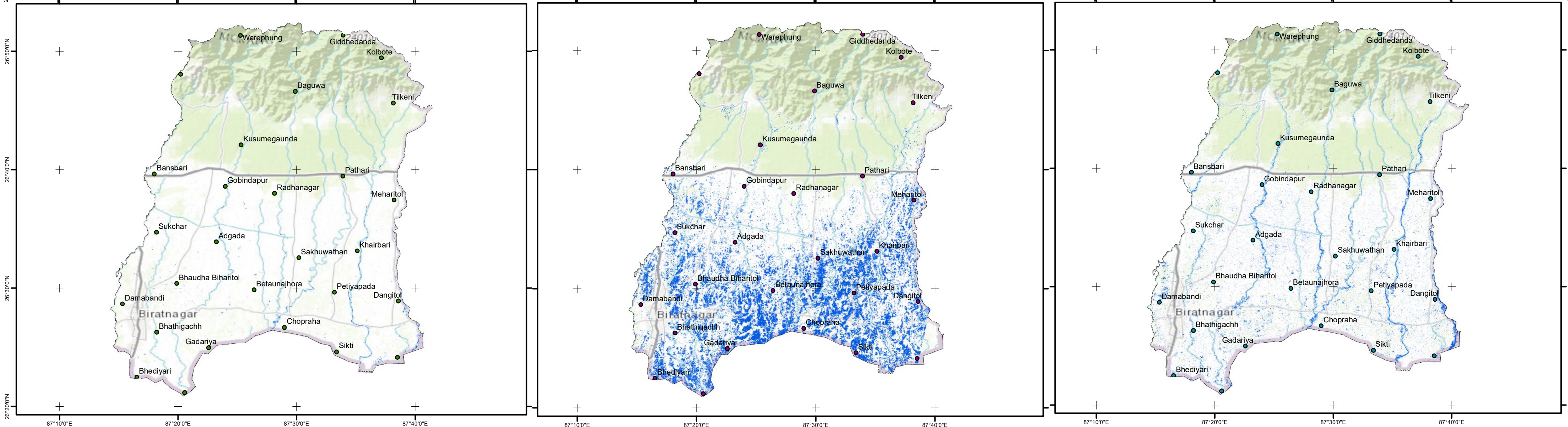
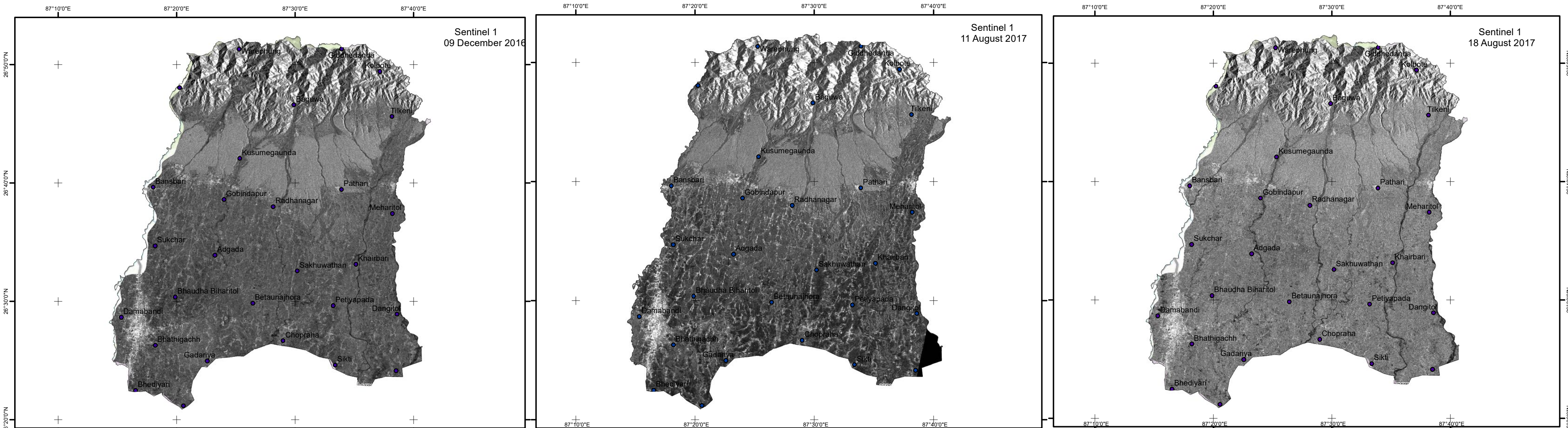


# Pre, during and post analysis of water extent in Morang district of Nepal for August 2017 flooding.

GLIDE No.: FL-2017-000107-NPL



**Situation analysis:**

This map presents water bodies mapped using SAR image of three different dates: pre-, during-, and post-event phases. The statistics of area of water bodies indicate receding flooding situation. This fact is also visually discernable. The area of the water bodies is clearly highest on 11 August during the flooding.

The flooding is receding by days but water logged areas are areas of concern from the point of disease outbreak.

Image source: European Space Agency  
 IRA data: Nepal Red Cross Society (NRCS)  
 Map prepared by: ICIMOD  
 Map generated: 25 August 2017  
 Coordinate system: WGS\_UTM\_Zone45N

**Legend**

- District boundary
- Water bodies
- Settlements

0 5 10 20 Kilometers

**Disclaimer:**

The results presented here are based on remote sensing analysis only, without ground validaiton. Elevation based filter has been used to improve the claiassificaiton.