

# 8.9M Honshu Japan Earthquake Overview

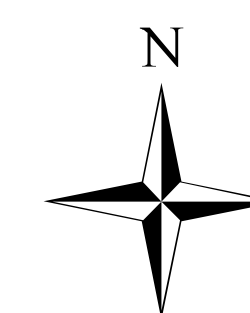
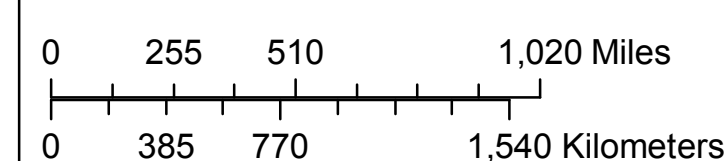
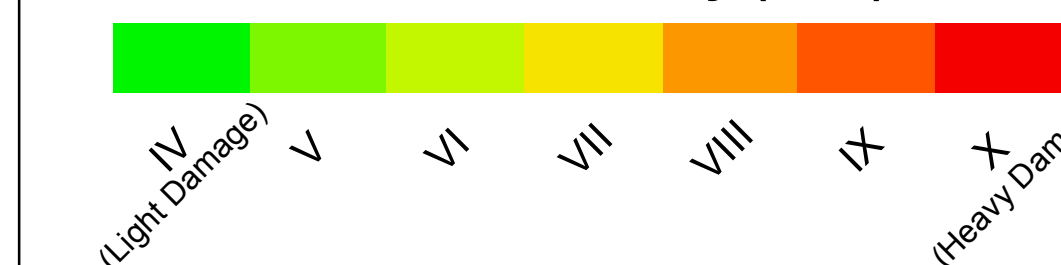
March 11, 2011



## Legend

- Seaports
  - Airports
  - Nuclear Power Plants
  - motorway
- Recent Earthquakes**
- 4.0 - 5.0
  - 5.0 - 6.0
  - 6.0 - 7.0
  - 7.0 - 8.0
  - 8.0 - 9.0

## Modified Mercalli Intensity (MMI) Shakemap

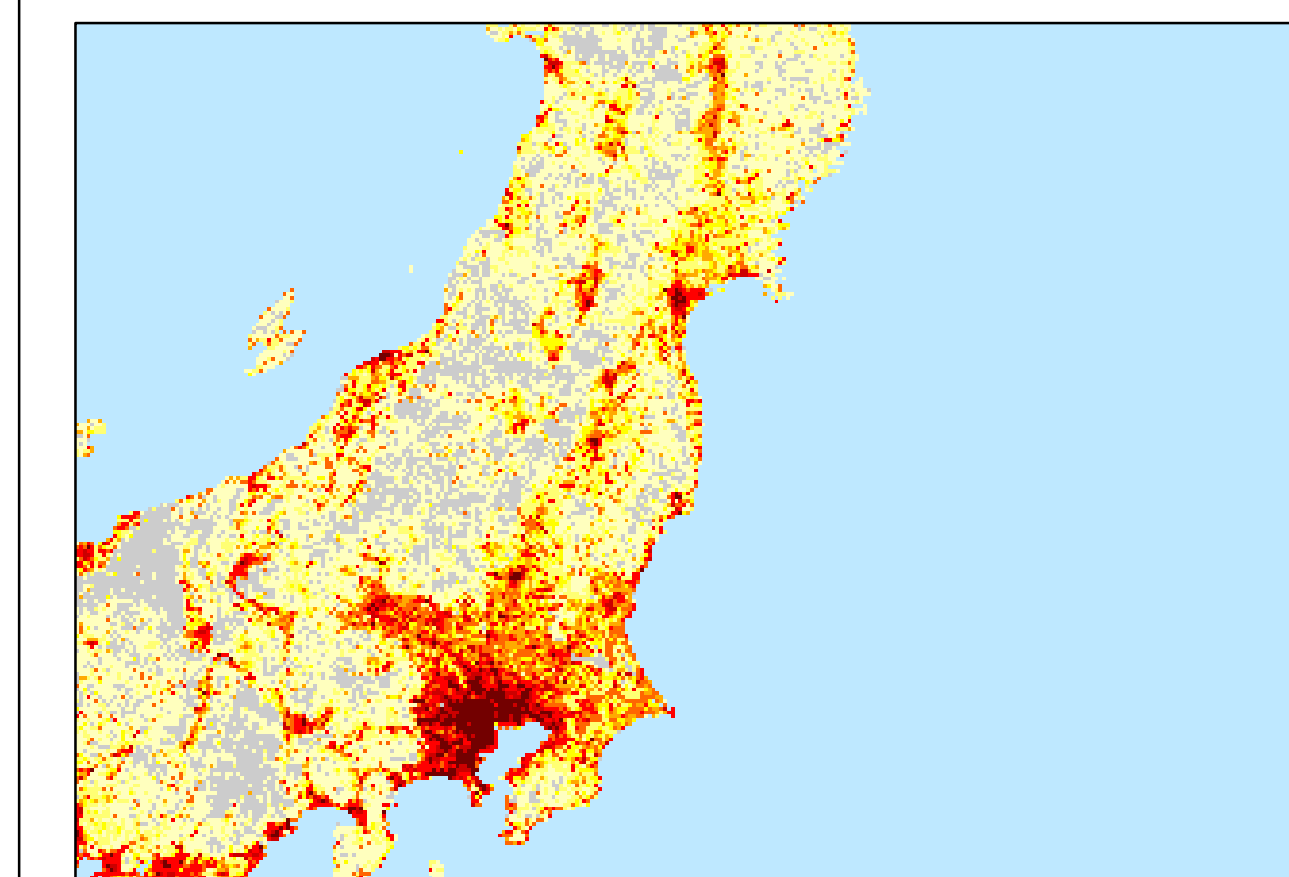


## Description

On March 11, 2011 0546 UTC a 8.9M earthquake struck off the coast of North Japan approx 128 km east of Sendai.

Shakemap MMI is a product of the U.S. Geological Survey Earthquake Hazards Program (<http://earthquakes.usgs.gov/eqcenter/shakemap>) in conjunction with regional seismic network operators.

## LandScan 2009 Population Density



## Overview Map



## Description

The delineation of political boundaries, and associated data shown here do not imply endorsement by the Pacific Disaster Center.

## Product Information:

Product Created.....11 March 2011  
 Source Data.....ESRI, Landsan, CloudMade GIS Downloads  
 Projection.....Mercator Datum WGS84  
 Produced by.....Pacific Disaster Center  
<http://www.pdc.org>

