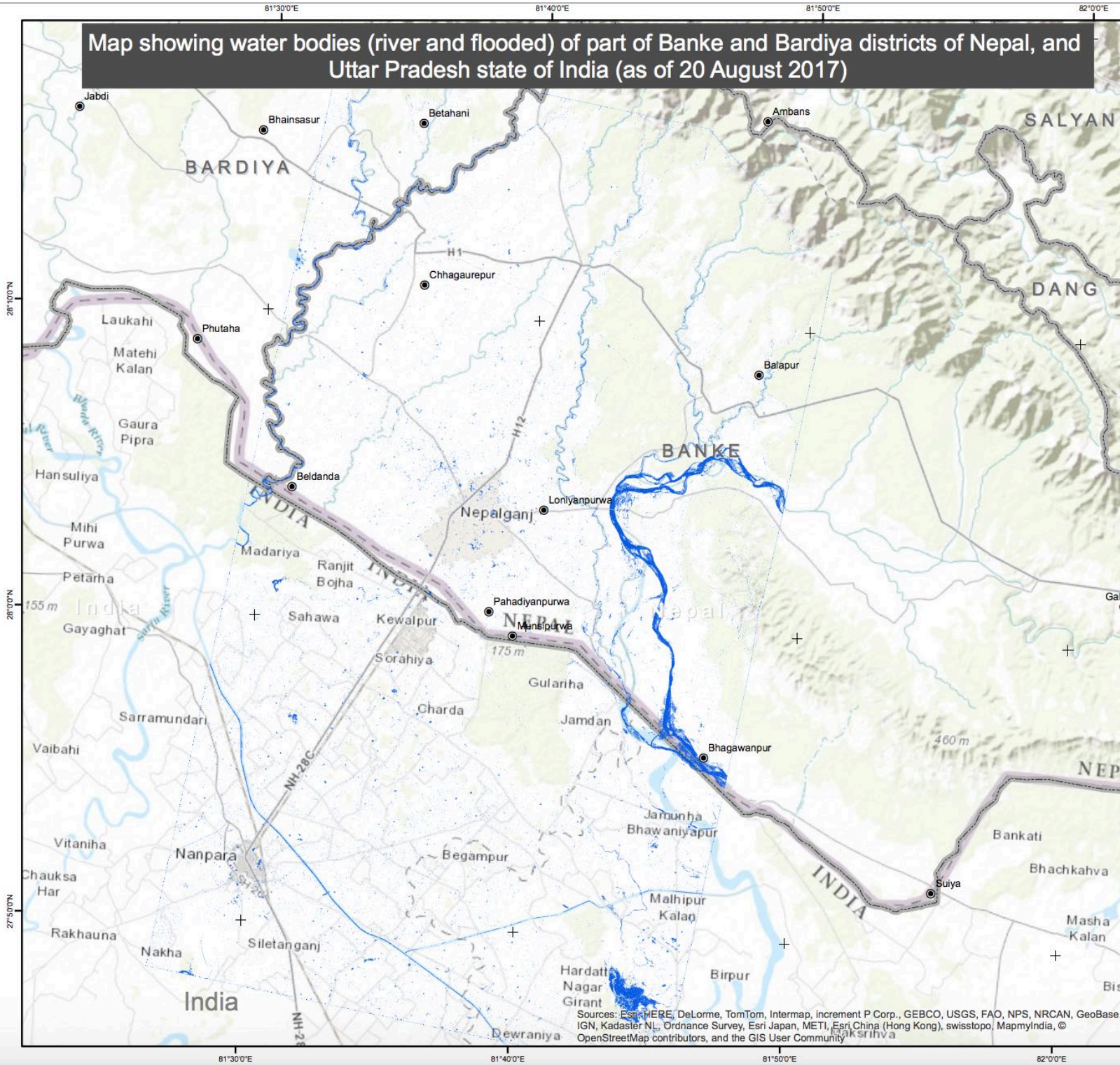
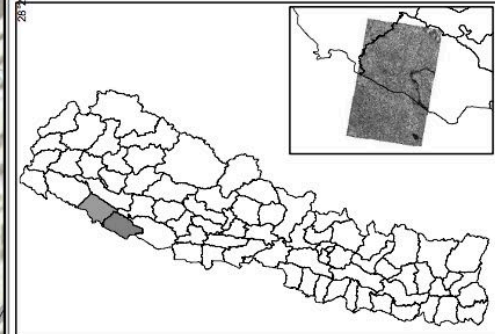


Map showing water bodies (river and flooded) of part of Banke and Bardiya districts of Nepal, and Uttar Pradesh state of India (as of 20 August 2017)

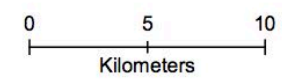


Slide: FL-2017-000107-NPL



Situation analysis::

Since 11 of Agust 2017 there has been incicent rainfall causing widespread flooding across the region, including Nepal and India. While the flood water has receded since the peak flow, there are many pockets where trapped flood water still remains (blue polygons).



**Legend**

- Settlement
- Water bodies (river and flood)
- - - National/district boundary

TerraSAR-X/TanDEM-X © DLR e.V. 2017, Distribution Airbus DS Geo GmbH

Data: Water bodies from TerraSAR-X  
 Acquisition date: 20 August 2017  
 Data source: Airbus Defence and Space  
 Coordinate system: WGS\_1984\_UTM\_Zone\_45N  
 Product generated date: 20 August 2017

**Disclaimer:**  
 The information presented is entirely based on remote sensing derived without field validation.

Sources: Esri, HERE, DeLorme, TomTom, Intermap, increment P Corp., GEBCO, USGS, FAO, NPS, NRCAN, GeoBase, IGN, Kadaster NL, Ordnance Survey, Esri Japan, METI, Esri China (Hong Kong), swisstopo, MapmyIndia, © OpenStreetMap contributors, and the GIS User Community

