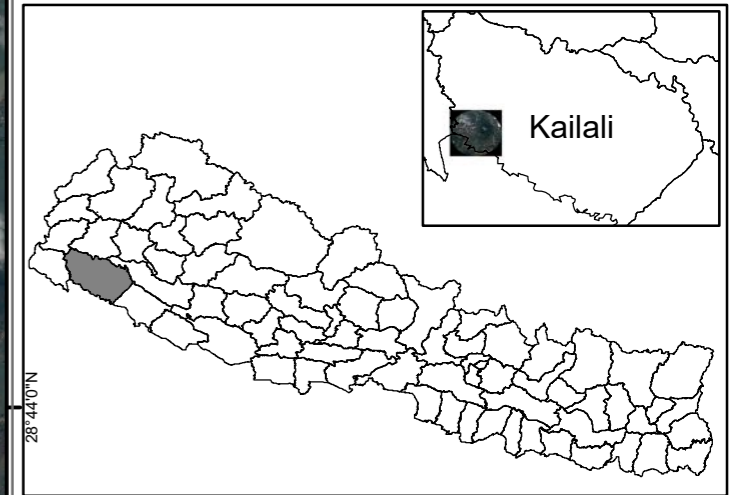


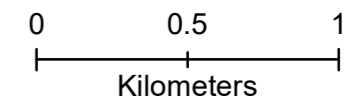
Map showing water logged area of part of Dhangadhi area of Kailali district, Nepal.
(as of 18 August 2017)

Glide: FL-2017-000107-NPL



Situation analysis:

One week after the widespread flooding large areas with water logging can be observed. Large part of the water logged areas are agricultural field. The damage to crop therefore is expected to be high. Areas with deep water bodies close to the settlements/cluster of houses has been indicated by white polygon. These area needs to be monitored to not to allow it to be source of water related diseases.

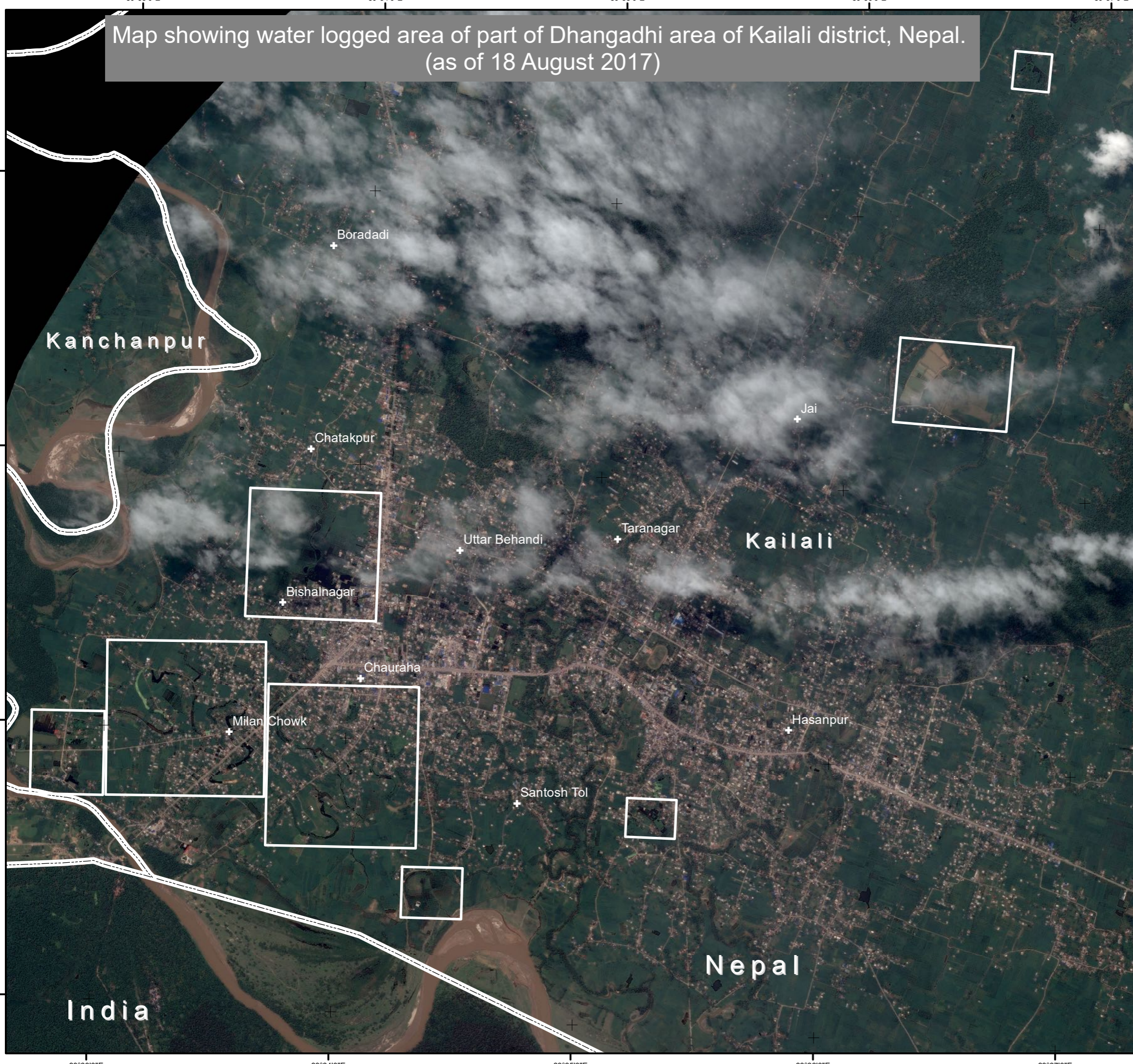


Legend

- + Locality name
- Settlement
- Water bodies (deep)
- National/district boundary

Data: Pleiades
 Acquisition date: 18 August 2017
 Data source: Airbus Defence and Space
 Coordinate system: WGS_1984_UTM_Zone_44N
 Product generated date: 19 August 2017

Disclaimer:
 The information presented is entirely based on remote sensing derived without field validation.



28°44'0"N
28°43'0"N
28°42'0"N
28°41'0"N

80°33'0"E 80°34'0"E 80°35'0"E 80°36'0"E 80°37'0"E