

Central European University

RSO candidate



Central European University

International postgraduate institution located in the heart of Budapest, Hungary

- Focused on Public Policy, involved in SGD's development
- Well-established links to int'l environmental/public policy organizations, government agencies
- Global coverage
- accreditations / partnerships with leading Universities and research institutions
- Developed infrastructure and support
- Executive education programs

CEU is among the world's top 100 universities in social sciences



CEU Departments

- **Environmental Sciences, Policy and Management**
- Public Policy
- Legal
- Economics
- Sociology and Social Anthropology
- International Relations
- Gender
- Business Management
- ...



Department of Environmental Science, Policy and Management

- First interdisciplinary in the region
- flexible program
- Wide professional network of graduates and partners
- Experience and available infrastructure in outreach, vocational and executive education, curricula development
- Numerous international projects
- Highly international



Environmental Systems Laboratory

<http://syslab.ceu.edu>

PEOPLE : TEACHING : BROADCASTS : RESEARCH : PUBLICATIONS : SMARG : NEWS : EVENTS : CONTACT US

Geospatial CEU

Join us in applying latest technologies at CEU research and teaching

[Learn how](#)



The Systems Laboratory aims at enabling use of latest Information and Communication Technologies in the areas of CEU core expertise. Special attention is paid to modeling of environmental and social systems and promoting use of geospatial technologies. Syslab develops and runs the graduate courses and workshops on

<https://syslab.ceu.edu/projects/our-research-projects>



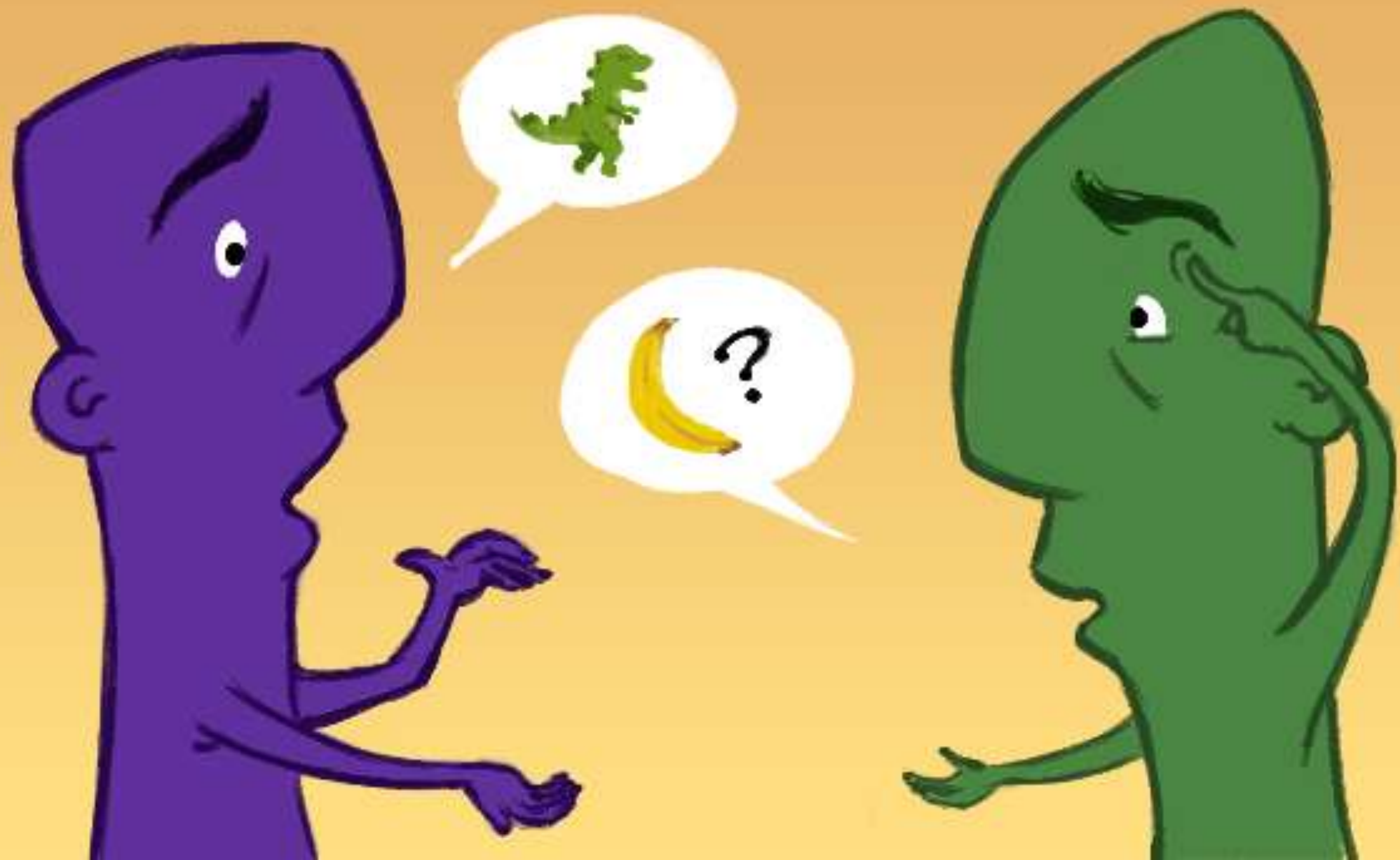
A typical student profile



Disaster Risk Reduction cluster







Eye on Earth Process, 2010-...



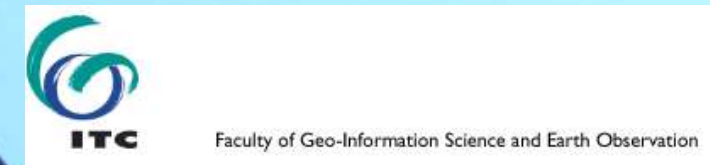
Access and use of available Societal and Environmental Information

Eye on Disaster management

Eye on Education

Eye on Water Security

Established network and community of practice



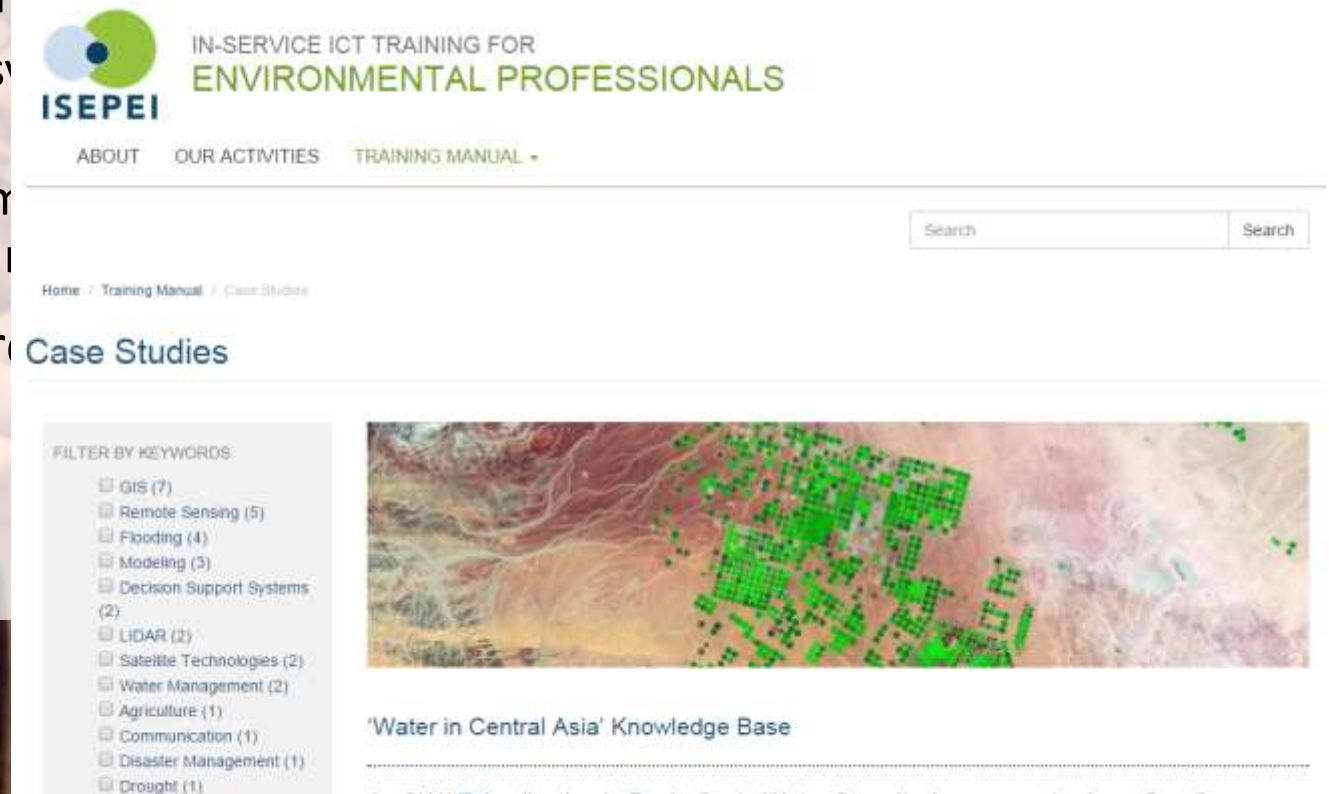
Universities can be hubs for DRR cooperation

- 
- Well-recognized higher education institutions
 - Excellence in social studies / public policy outreach
 - Well-established links to ICT leaders
 - Technologically-advanced infrastructure
 - Convenient logistics and transportation hubs
 - Attractive location
 - Financially self-supporting
 - Having inertia (Not project-based)
 - Curricula development
 - Easy expansion into various thematic areas
 - Attracting Funds
 - Conducting research
 -

Training Manual: ICTs for Water Security


<http://isepei.org/training-manual>

- Repository available online for decision-makers to access
- Examples of real-world technological applications covering a wide variety of water security issues
 - GIS, remote sensing, decision support systems, knowledge management
 - Flooding, agriculture, disaster management, response, urbanization, water supply, drought
- Description of each technology covered
- Possibilities to add own cases



Training Manual: ICTs for Water Security

Authors	Organizations	Case Studies
AUTHORS	AUTHORS	<p>FILTER BY KEYWORDS</p> <p><input checked="" type="checkbox"/> GIS</p> <p><input type="checkbox"/> Decision Support Systems (2)</p> <p><input type="checkbox"/> Agriculture (1)</p> <p><input type="checkbox"/> Communication (1)</p> <p><input type="checkbox"/> Drought (1)</p> <p><input type="checkbox"/> Flooding (1)</p> <p><input type="checkbox"/> LIDAR (1)</p> <p><input type="checkbox"/> Modeling (1)</p> <p><input type="checkbox"/> Remote Sensing (1)</p> <p><input type="checkbox"/> Water Management (1)</p> <p><input type="checkbox"/> Water Supply (1)</p>
ORGANIZATIONS	ORGANIZATIONS	<p>FILTER BY GEOGRAPHICAL SCOPE</p> <p><input checked="" type="checkbox"/> Europe</p> <p><input type="checkbox"/> Asia (2)</p> <p><input type="checkbox"/> Transboundary (2)</p>
IMPORTANCE OF DATA	IMPORTANCE OF DATA ACCESS	AUTHORS
TECHNOLOGIES	TECHNOLOGIES	ORGANIZATIONS
DATA PORTALS	DATA PORTALS	IMPORTANCE OF DATA ACCESS
GEOGRAPHIC INFORMATION SYSTEMS (GIS)	GEOGRAPHIC INFORMATION SYSTEMS (GIS)	TECHNOLOGIES
REMOTE SENSING	REMOTE SENSING	CASE STUDIES
DATA ANALYSIS: MODELING, SIMULATION, AND OPTIMIZATION	DATA ANALYSIS: MODELING, SIMULATION, AND OPTIMIZATION	CASE STUDY MAP
SENSORS AND COMMUNICATION TECHNOLOGIES FOR SMART WATER MANAGEMENT	SENSORS AND COMMUNICATION TECHNOLOGIES FOR SMART WATER MANAGEMENT	
DISTANCE LEARNING	DISTANCE LEARNING	
DECISION SUPPORT SYSTEMS	DECISION SUPPORT SYSTEMS	
MOBILE PLATFORMS / CROWDSOURCING	MOBILE PLATFORMS / CROWDSOURCING	
CASE STUDIES	CASE STUDIES	
CASE STUDY MAP	CASE STUDY MAP	



Airborne LIDAR Technology for Sustainable Watershed Management: Ecological Health of Riparian Zones

ArcSWAT Application in Basin-Scale Water Security Assessments: Azov Sea Case Study

GIS Based Communication Platform for the Sustainable Management of Transboundary Water Resources in Lithuania, Poland, Belarus and Kaliningrad Region (Russia)

GIS Based Tool for the Landscape Retention Planning

Remote Sensing Based Agricultural Drought Monitoring and Yield Loss Prediction Method



The top experts as speakers



New (Radar) Monitoring Constellations

Example: small sats, **ICEYE** - X1 launched as initial proof-of-concept microsatellite mission using a **SAR sensor**. The goal of the mission is to validate **in-orbit performance** of the satellite and begin operations with select customers. Constellation planned: Data for monitoring changing **sea ice** for maritime and environmental uses, tracking **marine oil spills** and helping to prevent **illegal fishing** among others.

ICEYE Small Satellites for Global Monitoring



Speakers: EC Joint Research Center



Speakers: German Aerospace Center (DLR)



Lectures / Hands-on sessions



July 2022, Geotechnologies in Monitoring SDGs



GEOSPATIAL TECHNOLOGIES IN
SDGS 2022

PREVIOUS WORKSHOPS -
INNOVATIONS IN DISASTER RISK
REDUCTION

PREVIOUS WORKSHOPS -
GEOSPATIAL TECHNOLOGY
& REMOTE SENSING

PARTICIPANTS NETWORK

More than 300 experts (out of 2000 applicants) have participated in 14 workshops organized since the Project's start in 2014. The workshops' target groups are UN and other international organisations staff as well as relevant national agencies representatives. To see the workshops' participants by year please use the filters on the interactive map below.



University curricula development



Repository of training recordings

CEU E-learning Site

DEPARTMENTS ▾

OTHER UNITS ▾

SUPPORT ▾

23

Victor Lagutov

MY RECENT COURSES ▾

THIS COURSE ▾

GST 19-20

Participants

Send message to Class

Discussion Forums

Assignments

Grades

Examples of GST-focused MSc theses at Syslab

Go Geospatial. Join SMARG

Signup, Consultations and Submissions

Practicals 1 (October 10) - GoogleEarthPro / GoogleMaps

Practicals 2 (October 24th) - Online Mapping

Testing interactive video

CEU

The ISEPEI Project: In-Service ICT Tr...

Watch later

Share

cool, show me more about ISEPEI

YouTube

2:15

Reuse

ADMINISTRATION

▼

H5P

■

Edit settings

■

Locally assigned roles

■

Permissions

■

Check permissions

■

Filters

■

Logs

■

Backup

■

Restore

►

Course administration

►

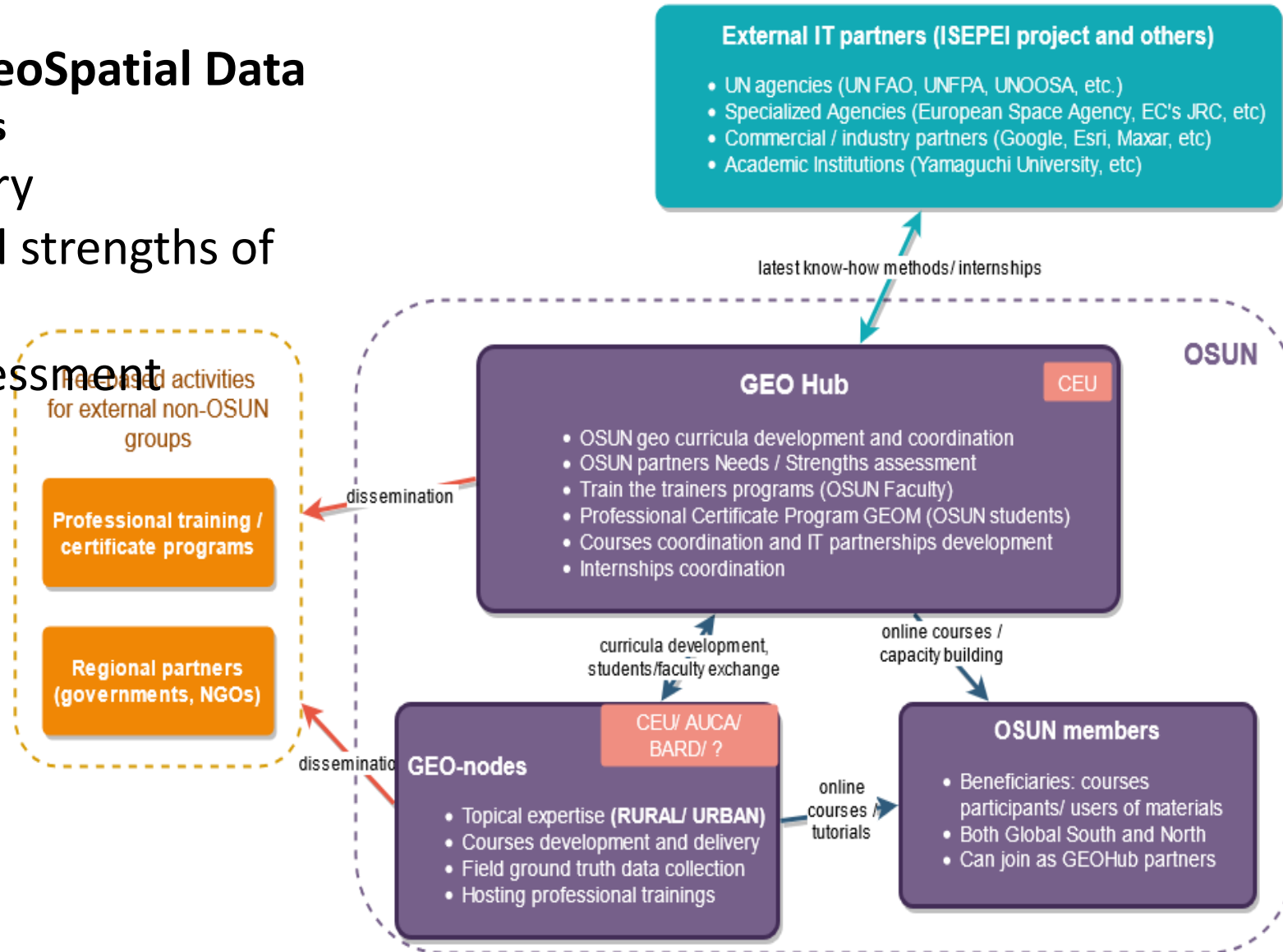
Advanced Options

July 2023

Geospatial Technologies in Monitoring SDGs: Building Resilience



- **Methods and Technologies of GeoSpatial Data**
 - collection / visualization / analysis
- Technologies are cross disciplinary
- Capitalizing on existing individual strengths of OSUN' members
- OSUN's needs and strengths assessment
- UN agencies
 - FAO, UNFPA, UNOOSA, etc
- Global IT leaders
 - Google, Esri, Planet, etc
- open for participation



- 
- Summer University (Broad topics)
 - As speakers
 - Or as participant target groups
 - Internship programs
 - Online courses
 - Professional trainings
 - Budapest/Vienna/ your locations
 - Targeted at the topic of your

THANK YOU

<http://isepei.org>

<http://syslab.ceu.edu>

lagutov@ceu.edu





See you in Budapest time?

