

From science to  
practice:  
Recommended  
practices for disaster  
risk management

19 September 2014



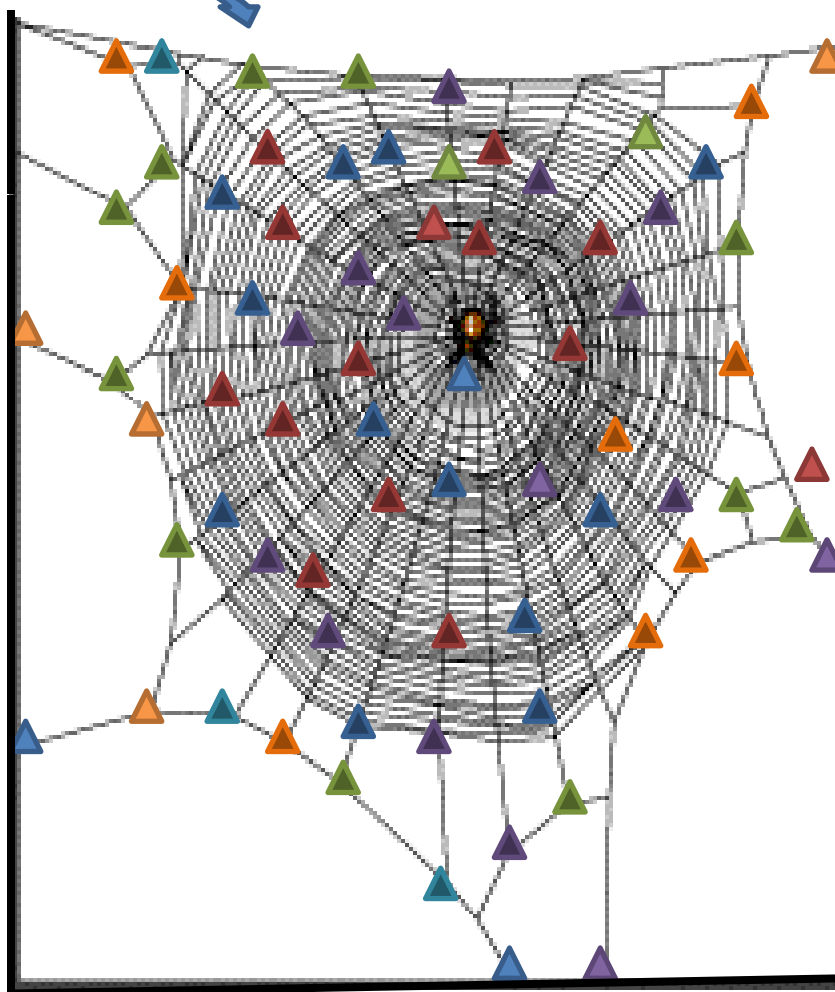
**UNITED NATIONS**  
**Office for Outer Space Affairs**



## UN-SPIDER Knowledge Portal

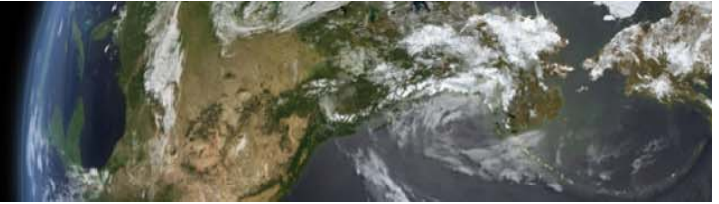
### Information Sources:

- ▲ Regional Support Offices
- ▲ Conferences, Workshops, Expert Meetings
- ▲ Technical Advisory Missions
- ▲ WWW
- ▲ Scientific Papers
- ▲ Networks (e.g. IWG-SEM, UNGIWG)
- ▲ Social Media
- ▲ Civil Protection Agencies
- ▲ Space Agencies
- ▲ Academia
- ▲ ...

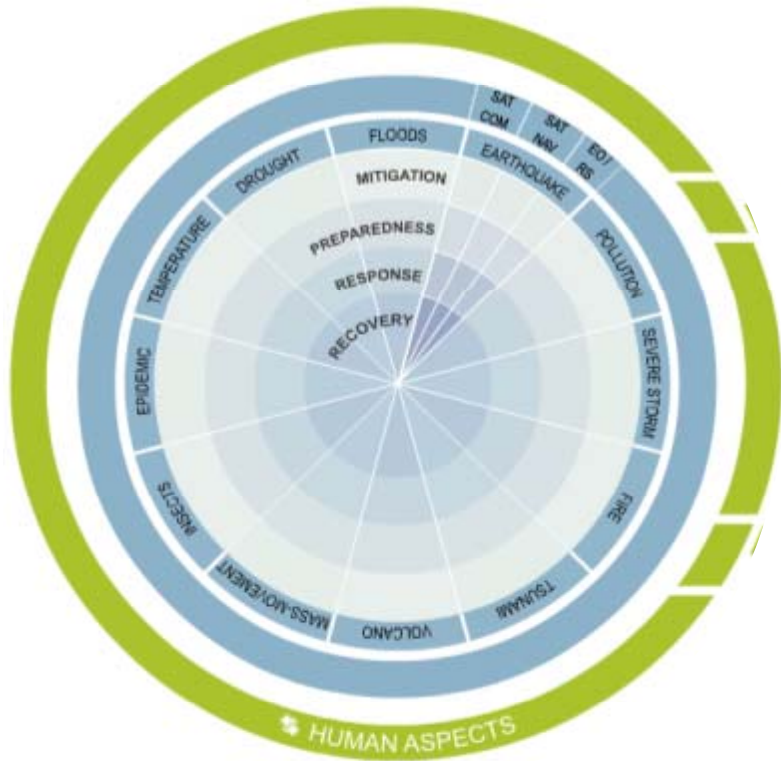


### Content types/ tagging:

- News
- Events
- Data Sources
- GIS/RS Software
- Methodologies
- Case Studies
- Institutions
- Emergency Response
- Risk Management
- Floods, Droughts
- Tsunamis
- ...



# Science perspective: Space Application Matrix



- Hazard type/ Human aspects
  - Disaster Cycle Phase
  - Space technology
- 192 fields

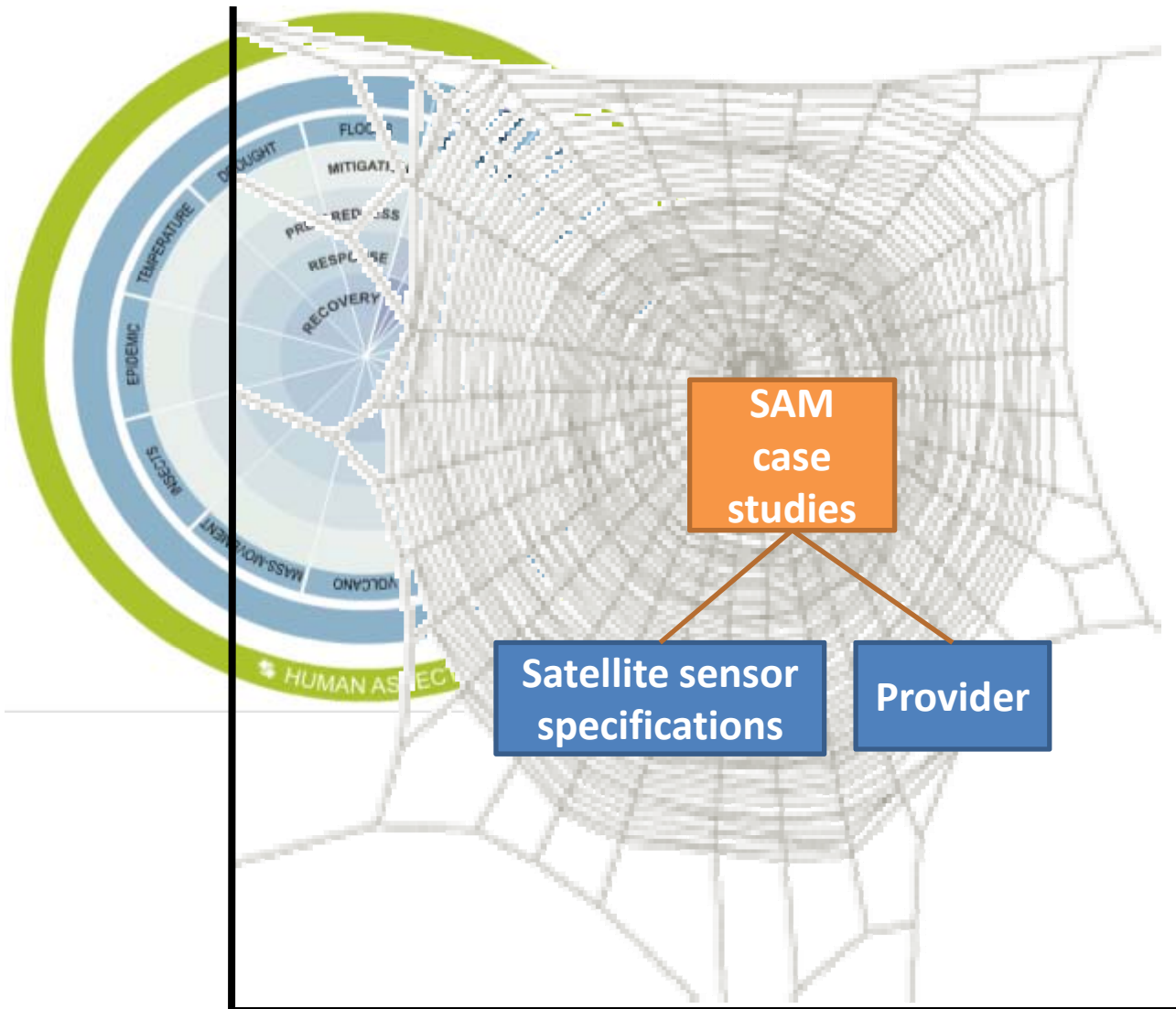
Currently 199  
different **case  
studies/  
research papers**  
in 66 fields

↓  
Linked to 106 **satellite  
sensor profiles** and 35  
**providers**





## Science perspective: Space Application Matrix





## From Science to Practice...

How can I apply these methods?

Where do I get the data and software?

Are the methods robust?

Is the method transferable, i.e. can I apply it  
in my country?

Do I have sufficient capacity and resources to  
apply the method?

How accurate and reliable are the results?

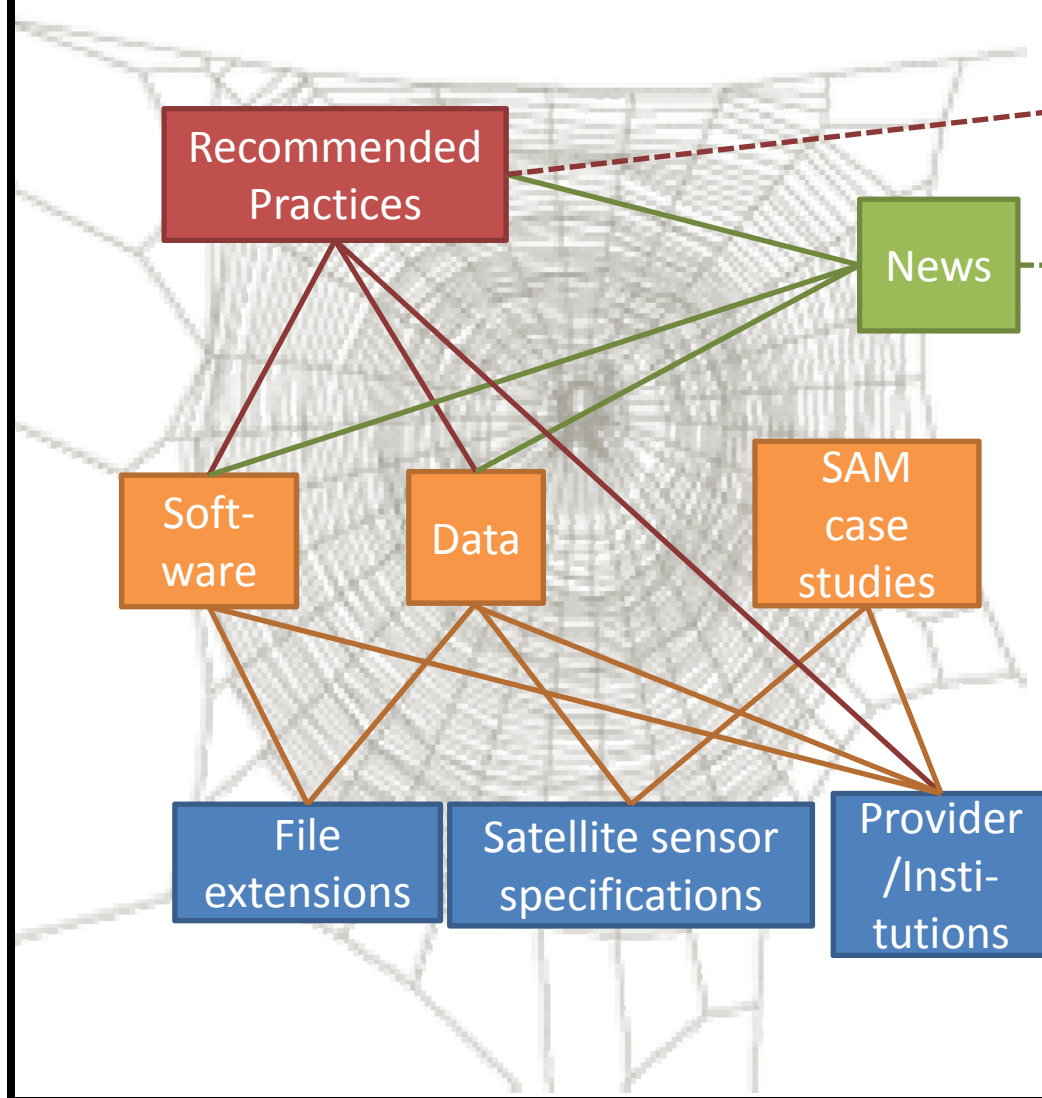
How do I interpret the resulting image?

...?





## Recommended Practices on the Knowledge Portal



UN-SPIDER  
training events

Social  
Media

- 104 published data sources
- 107 software items
- 199 SAM case studies
- 106 satellite sensor specifications
- 1878 news
- 375 institutions
- 2 recommended practices finalized

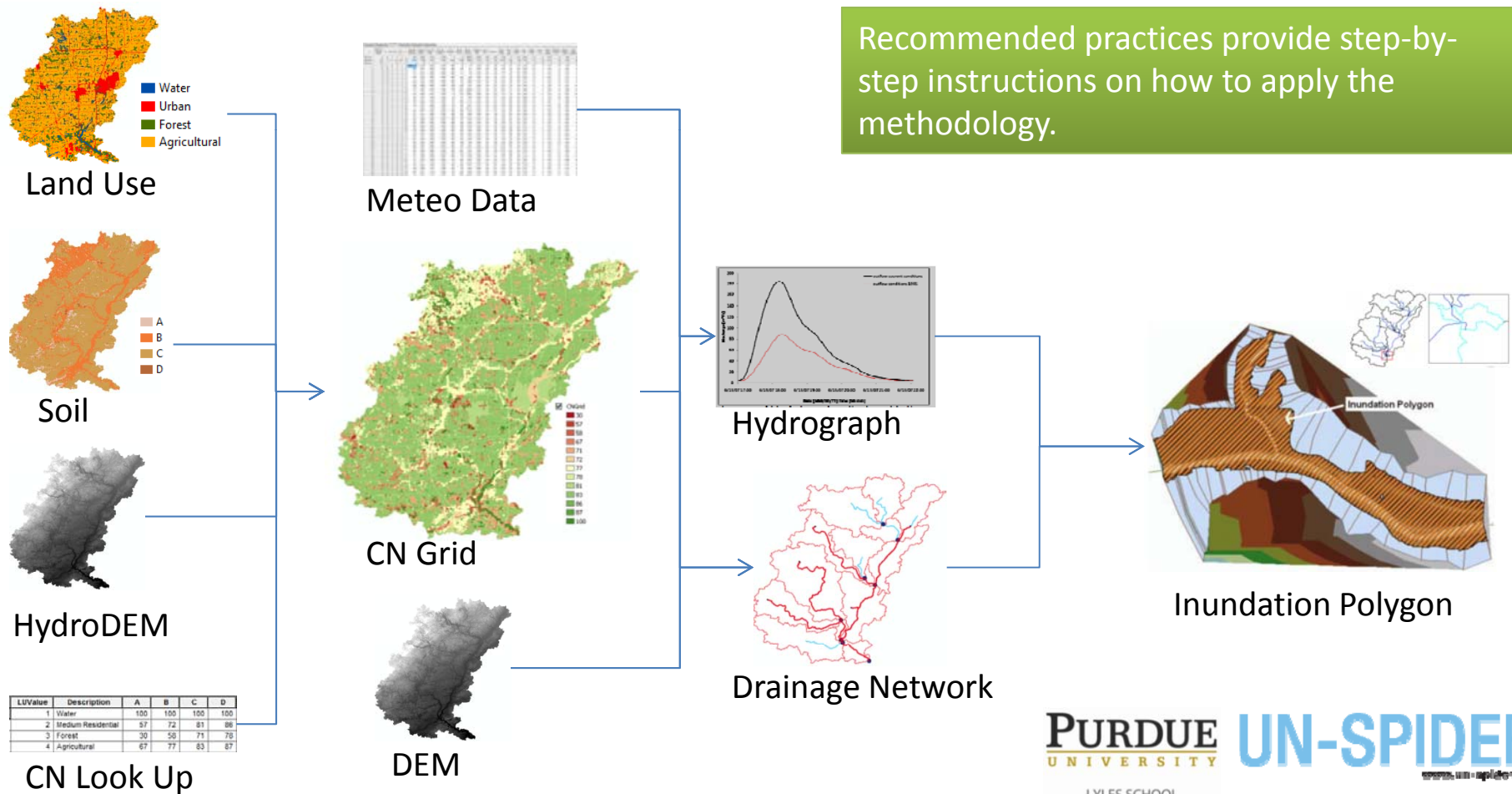




# Example: Recommended Practice Flood Hazard Mapping

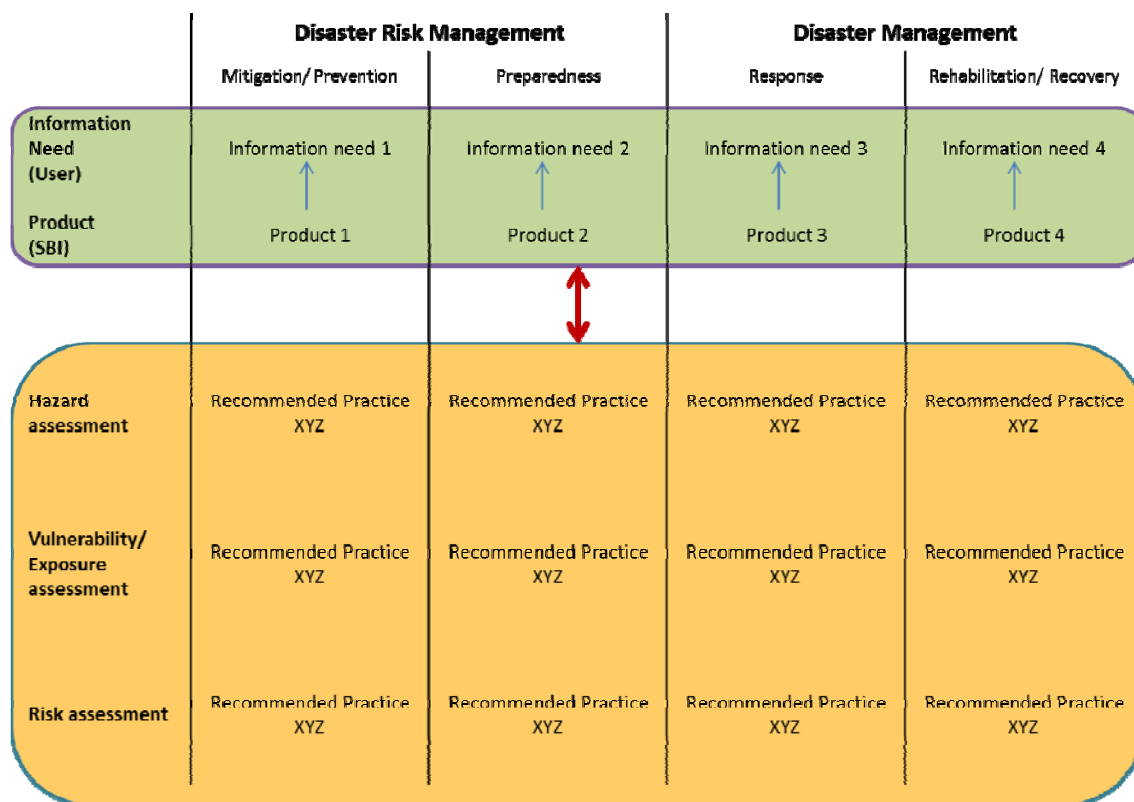
How do land use changes affect runoff and potential inundation areas in my region?

Recommended practices provide step-by-step instructions on how to apply the methodology.





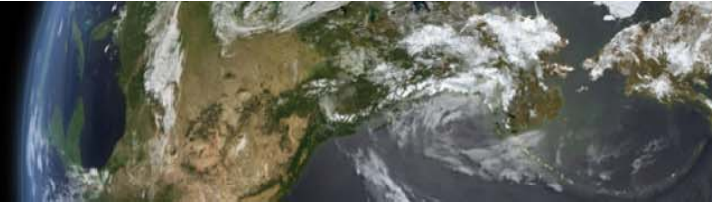
## Recommended Practices – Stage 2



### Components:

- Define **user needs** (e.g. based on TAM results, stakeholder assessments);
- Establish **peer-group of experts**;
- **Test and evaluate** proposed practices (regarding robustness, reproducibility, applicability, validity);
- **Compare** different practices on the same use case.





## UN-SPIDER as a project partner

- The **UN-SPIDER Knowledge Portal** based on a sophisticated Content Management System contains an abundance of relevant, well-structured, and interlinked information on the use of Space-based Information for Disaster Risk Management and Emergency Response.
- With dedicated **Outreach** activities via news, publications, and Social Media UN-SPIDER reaches a large and relevant audience.
- UN-SPIDER serves as a **Bridge** between providers of Space-based information and users for Disaster Risk Management and Emergency Response.
- The programme aims at **linking science and practice.**



**UNITED NATIONS**  
**Office for Outer Space Affairs**



**Thank you for the attention**

**[www.un-spider.org](http://www.un-spider.org)**

**UN-SPIDER**  
[www.un-spider.org](http://www.un-spider.org)