



RSO Update

Asian Disaster Preparedness Center (ADPC)

Peeranan Towashiraporn – ADPC

UN International Conference on Space-based Technologies for Disaster Management
September 21, 2016 - Beijing, China

ADPC signed an agreement to become UN-SPIDER RSO

5 April 2016



The screenshot shows a web browser window displaying the UN-SPIDER Knowledge Portal. The page title is "Thailand Regional Support Office". The main content area features the ADPC logo, which consists of the letters "adpc" in white on a red square background. Below the logo, there is a headline: "ADPC signs an agreement with UNOCHA to become a UN-SPIDER RSO". Underneath the headline, there is a section titled "At a glance:" followed by a paragraph of text describing ADPC's history and mission. To the right of the main text, there is a "Get in touch" section with contact information for Dr. David Galar, including his title as Chief of Party - ECHO/UN Mapping, a phone number, an email address, and an address in Bangkok, Thailand. The website header includes the UN-SPIDER logo and the text "KNOWLEDGE PORTAL Space-based information for Disaster Management and Emergency Response". A navigation menu is visible at the top, and a search bar is located on the right side of the header.

United Nations
Office for Outer Space Affairs
UN-SPIDER KNOWLEDGE PORTAL
Space-based information for Disaster Management and Emergency Response

Home | Space Application | Risk & Disasters | Links & Resources | Advisory Support | **Network** | Projects | News & Events | About Us

Network

- WMO-SCM
- National Focal Points
- Regional Support Offices
- Global Earth Observation Partnership

Thailand Regional Support Office



ADPC signs an agreement with UNOCHA to become a UN-SPIDER RSO

At a glance:
The Asian Disaster Preparedness Centre (ADPC) was established in 1988 as an independent regional organization. ADPC has developed networks with government, line agencies and civil society organizations with regional organizations and development agencies as a way to provide the foundation for its work. It works in a number of countries in Asia including Afghanistan, Bangladesh, Bhutan, Cambodia, China, India, Indonesia, Lao PDR, Maldives, Mongolia, Myanmar, Nepal, Pakistan, Saudi Arabia, Sri Lanka, Thailand, the Philippines, and Vietnam. With headquarters located in Bangkok, Thailand, ADPC has country offices in Bangladesh and Myanmar.

ADPC develops disaster risk management (DRM) information and systems to reduce local, national

Get in touch

Main Contact:
Dr. David Galar
Asian Disaster Preparedness
Centre (ADPC)
Chief of Party - ECHO/UN Mapping
+662 208 0952-02 Ext. 508
david.galar@adpc.net

Address:
Asian Disaster Preparedness

Annual UN-SPIDER Regional Support Offices Coordination Meeting & UN-SPIDER+10 Anniversary Conference

6 - 8 June 2016, Vienna, Austria



UN-SPIDER Technical Advisory Mission follow up activities

27 June - 1 July 2016, Nay Pyi Taw, Myanmar



- Together with ICIMOD
- Participated in a training on the “Use of Earth observation data and GIS techniques for landslide hazard mapping”
- Shared experience of Multi-Hazard Risk Assessment in Bangladesh in High level advocacy and Technical consultation meetings

UN-SPIDER Technical Advisory Mission follow up activities

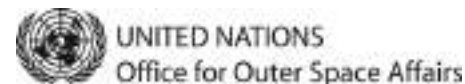
25 - 29 July 2016, Vientiane, Lao PDR



- Together with IWMI, Beijing Normal University
- Participated in a training on the “space based technologies exploring the use of earth observation data and modeling tools in flood risk mapping and flood early warning”

ASEAN workshop on 'Simulation exercise on the procedural guidelines for sharing space-based information during emergency response'

19 - 21 April 2016, Bogor, Indonesia





HOME ABOUT THEMES PRODUCTS SERVICES NEWS EVENTS

search...

"CONNECTING SPACE TO VILLAGE" IN THE LOWER MEKONG REGION

SERVIR-Mekong is a geospatial data-for-development program that responds to the needs of Lower Mekong countries.

[Learn more](#)



DECISION SUPPORT TOOLS



GEOSPATIAL DATASETS



RESOURCES & PUBLICATIONS

REQUEST TECHNICAL ASSISTANCE

SERVIR-Mekong priorities are set by the expressed needs of stakeholders. Let us know the needs of your organization by requesting assistance.

FEATURED



Estimated Dry and Wet Season Surface Water Distribution



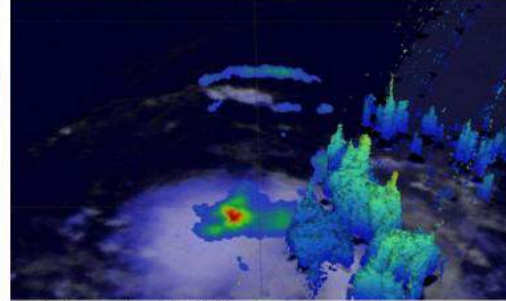
Monitoring Land Cover for Resilient Development

Aug 18 2016

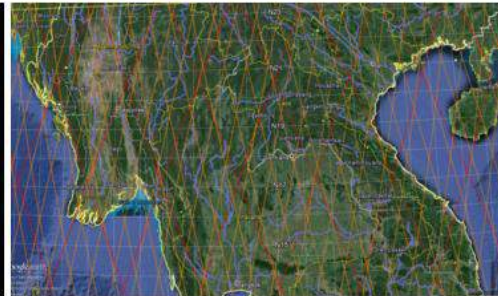
SERVIR-Mekong's Virtual Rain Gauge



The GPM Core Observatory and partner satellites orbiting Earth. The joint NASA - JAXA (Japan Space Agency) GPM instrument was launched in February 2014.



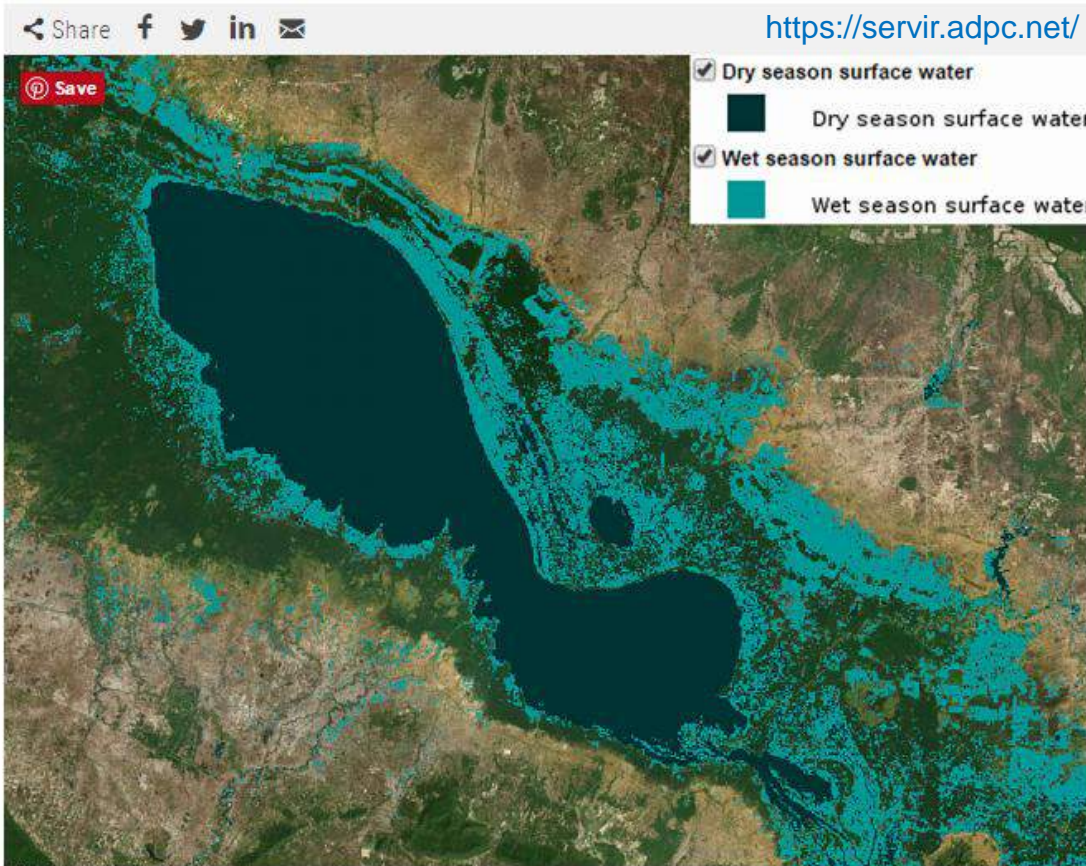
A visualization of GPM data from a tropical storm system.



The Jason-2 satellite and part of the Lower Mekong Region showing the intersection of Jason-2 satellite (red lines) and Envisat (orange lines) orbits and major streams (purple lines) in the LMR. These intersection points provide the opportunity to generate virtual stream gauge data for hundreds of points throughout the region.

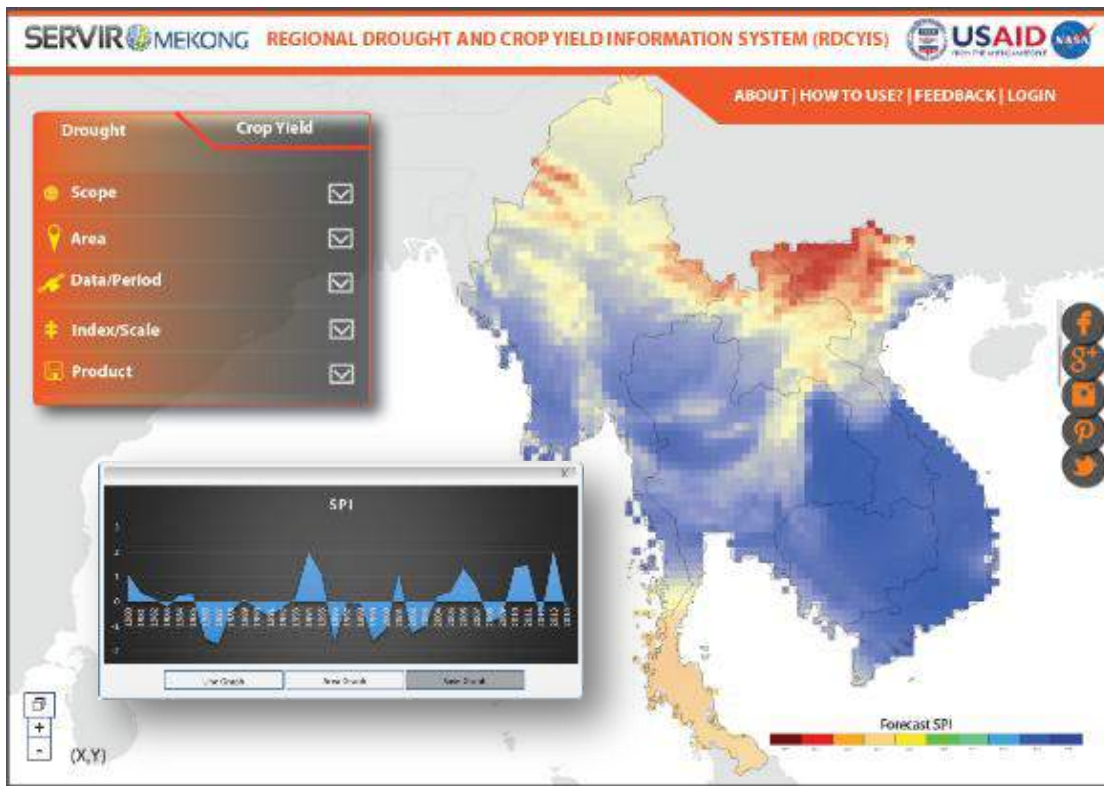
- Data on a 3-hourly basis, which would be suitable even for nowcasting (i.e., less than 6 hours) system, which are especially relevant for flash flood and small river warnings.
- GPM precipitation datasets are freely available through the NASA website (<http://pmm.nasa.gov/data-access/downloads/gpm>)

SERVIR-Mekong's Surface Water Mapping



- ❑ This satellite-based surface water mapping system produces a series of historical inundated areas for the years 2000 to 2015 in the Lower Mekong Basin to help end users visualize and understand the inter-annual variability of inundated areas
- ❑ The tool uses publicly available satellite imagery and radar data (initially from Landsat 7 and 8 and later from Sentinel-1 radar)

SERVIR-Mekong's Drought Monitoring



- Based on Regional Hydrological Extremes Assessment System (RHEAS) and Decision Support System for Agrotechnology Transfer (DSSAT) models
- Assist stakeholders with:
 - Drought monitoring
 - Seasonal drought forecasting;
 - Short and long-term mitigation measures during and in advance of droughts; and
 - Crop yield forecasting

Going Forward

- Continue to support in TAM missions and follow-up activities
- Organize joint learning workshop
- Propose joint projects

THANK YOU
FOR YOUR ATTENTION

The logo for the Asian Disaster Preparedness Center (ADPC), consisting of the lowercase letters 'adpc' in white on a red rectangular background.

<http://www.adpc.net>



<http://www.drrprojects.net>



Group: Asian Disaster Preparedness Center



@ADPCnet