



# The European Commission's science and knowledge service

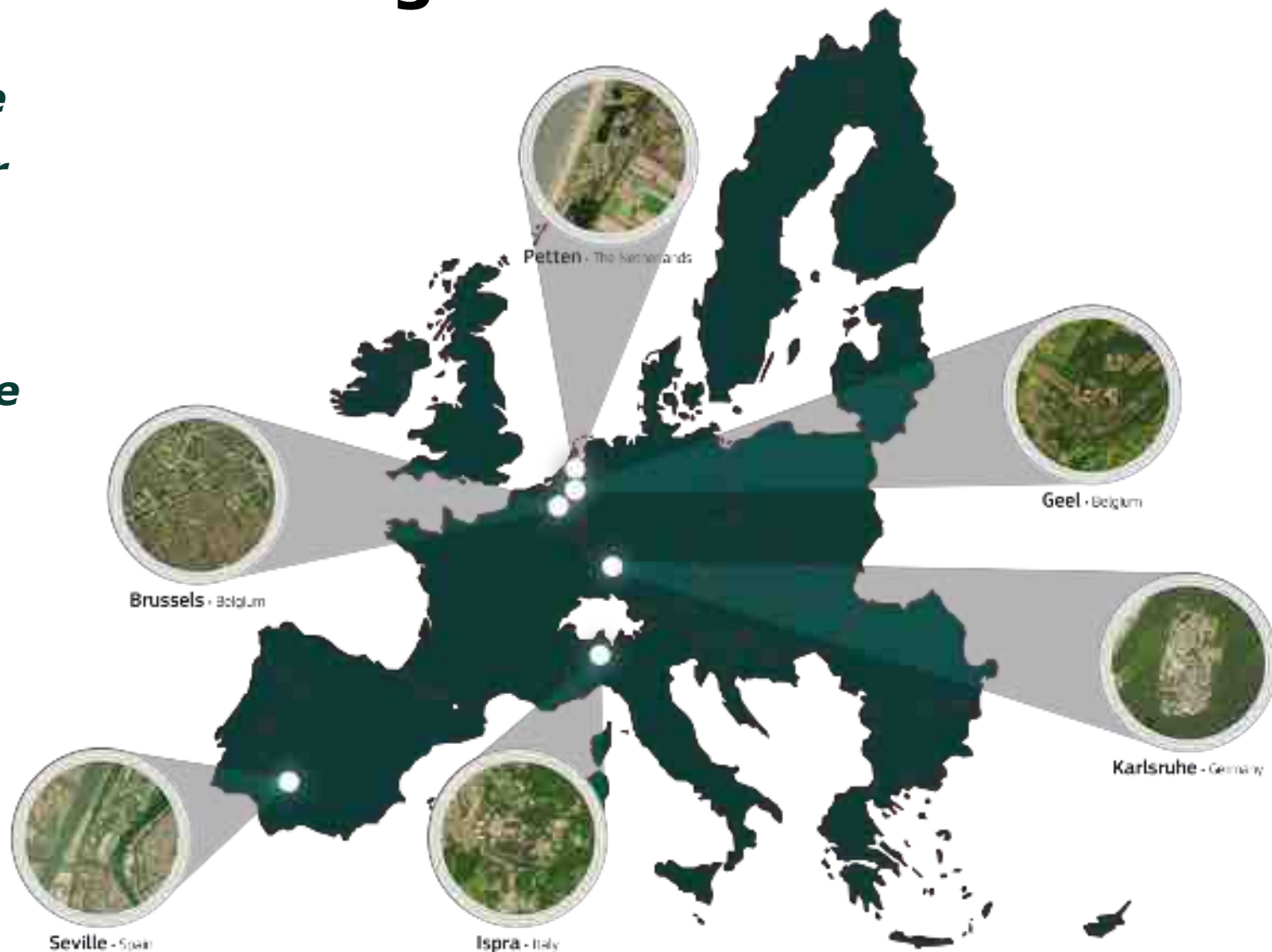
Joint Research Centre

# The Joint Research Centre at a glance

*As the science and knowledge service of the Commission our mission is to support EU policies with independent evidence throughout the whole policy cycle*

## **3000 staff**

Almost 75% are scientists and researchers.  
Headquarters in Brussels and research facilities located in 5 Member States.



# **Big data and integrated systems for the Agenda 2030 Experience from the GEO Human Planet Initiative**

**Thomas Kemper, European Commission**

United Nations / Germany International Conference on “International Cooperation for Low-Emission, Resilient Societies” – Bonn (Germany), 22-24 November, 2017

# Geo-information on human settlements

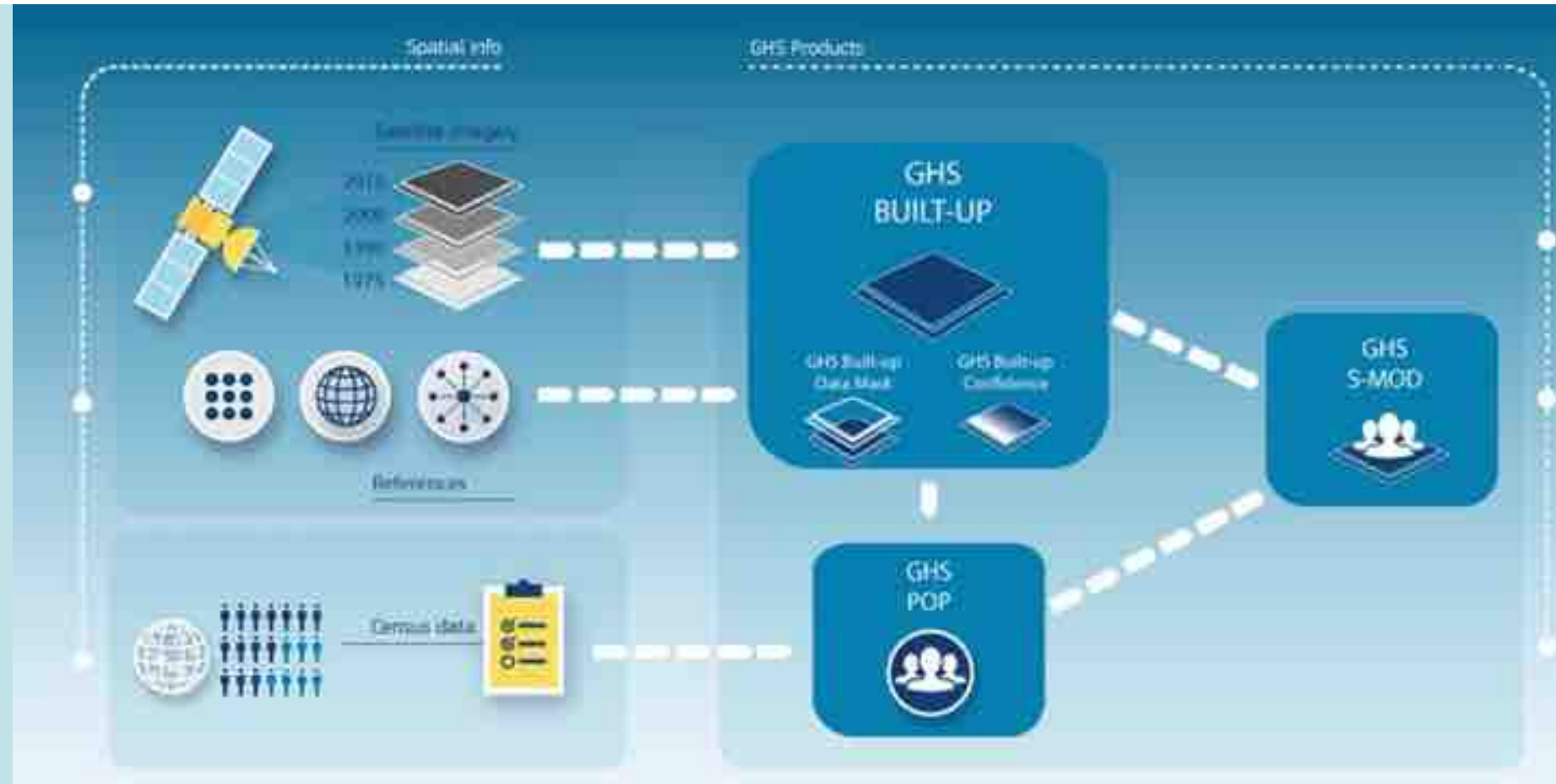
- Required for **modeling, analysis, policy-making** (i.e. producing indicators and monitoring targets):
  - Sendai Framework for DRR 2015-2030 (adopted Mar. 2015)
  - 2030 Agenda for Sustainable Development (SDGs, Sept. 2015)
  - COP 21 Paris Agreement on Climate Change (Nov. 2016)
  - Habitat3 – New Urban Agenda (Dec. 2016)
- **Exposure** (to hazards, pollutants,...)
- **Access** (to resources, services,...)
- **Impacts** (from natural disasters, environmental change,...)

# Geo-information on human settlements

- Producing indicators and monitoring targets, global scope:
- **Up-to-date**
- **Detailed**
- **Consistent** (comparable)
- **Sustainable** (repeatable, cost-effective)
- **Transparent** (clear methods)
- **Open & free**

# The Global Human Settlement Layer project

- Models/methods
- Tools
- Geospatial data
- Capacity building



# Creating a global built-up grid

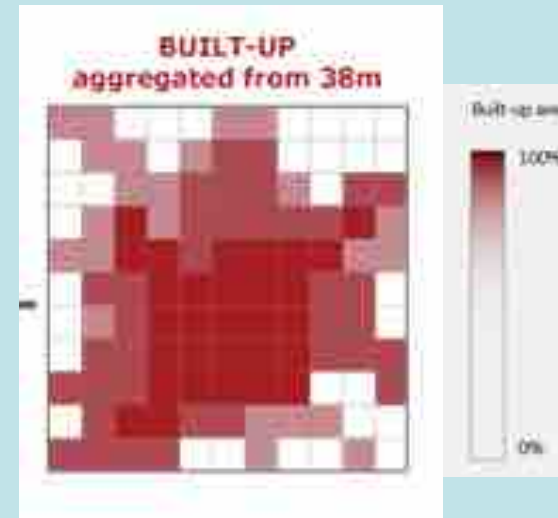
Satellite imagery is processed to extract buildings



Share of area covered by buildings based on satellite imagery



Share of area covered by buildings aggregated to 1 km grid cells



## Low-level abstraction improve semantic interoperability

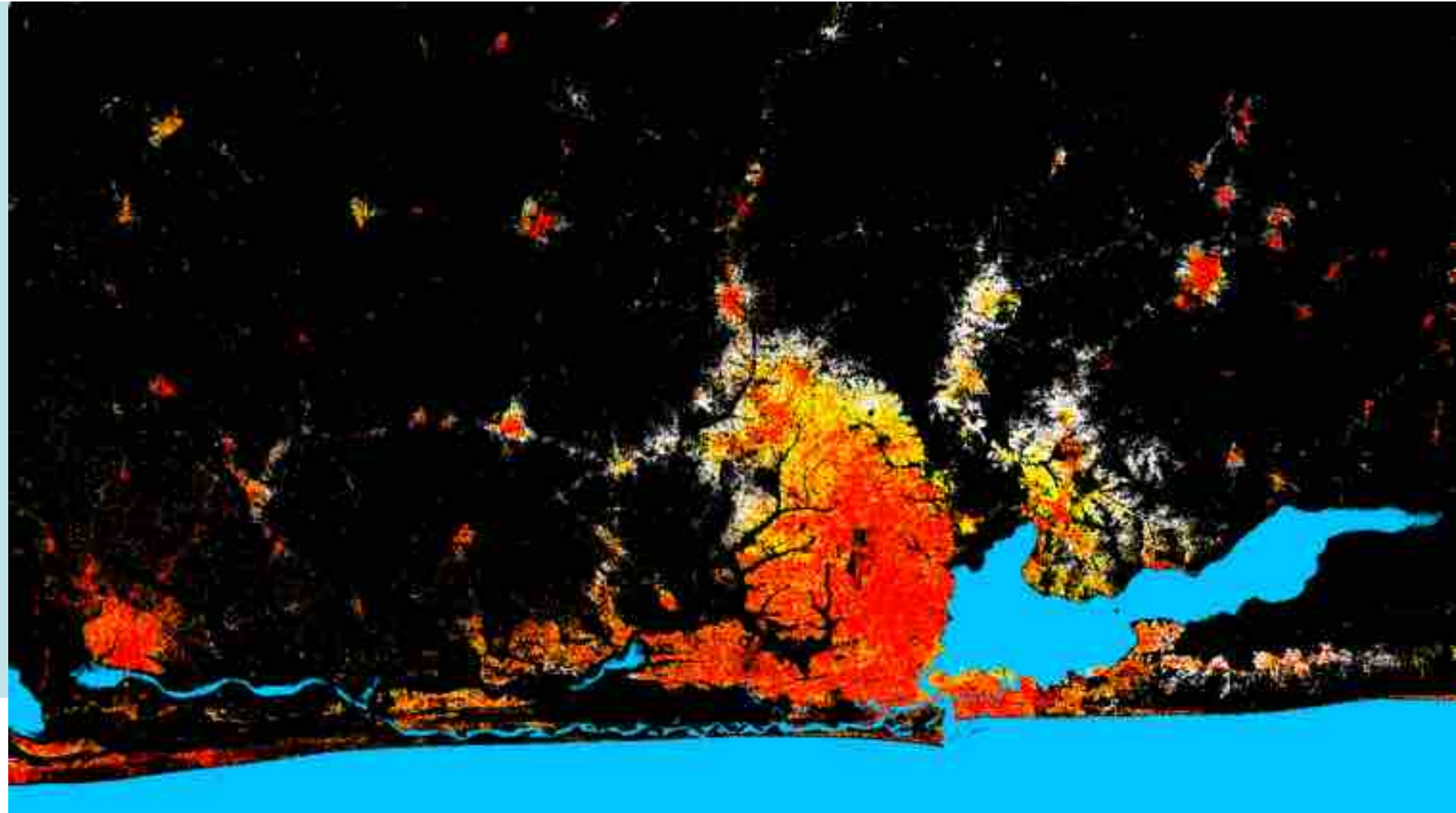
What we detect: "built-up area" = all spatial units (30x30m) where a building or part of a building can be recognized



# Monitoring urbanisation in the past 40 years

## GHSL-MT (2017)

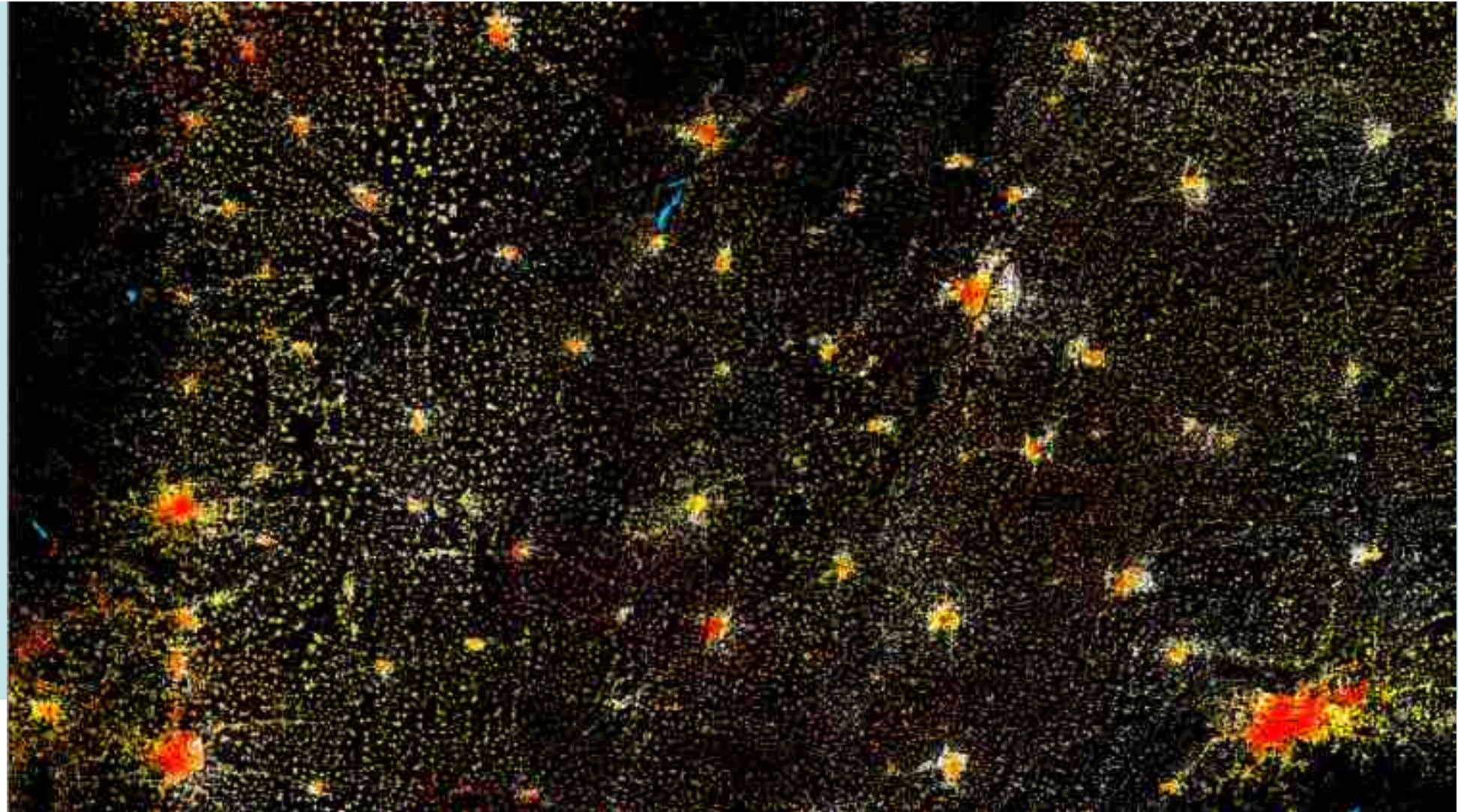
- Lagos (NIGERIA)



# Monitoring urbanisation in the past 40 years

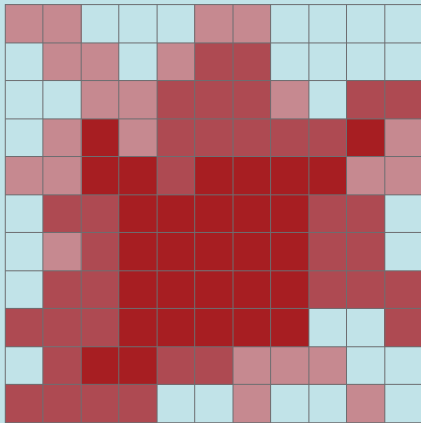
## GHSL-MT (2017)

- Hengshi (CHINA)



# Creating a global population grid

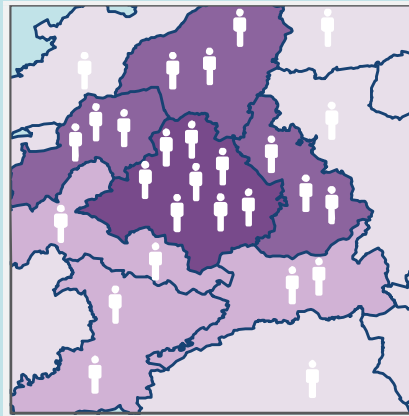
**Share of area covered by buildings**



*Source: JRC GHSL*

+

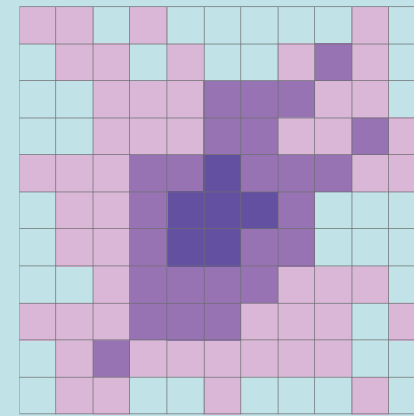
**Census data on population**



*Source: CIESIN, Columbia University*

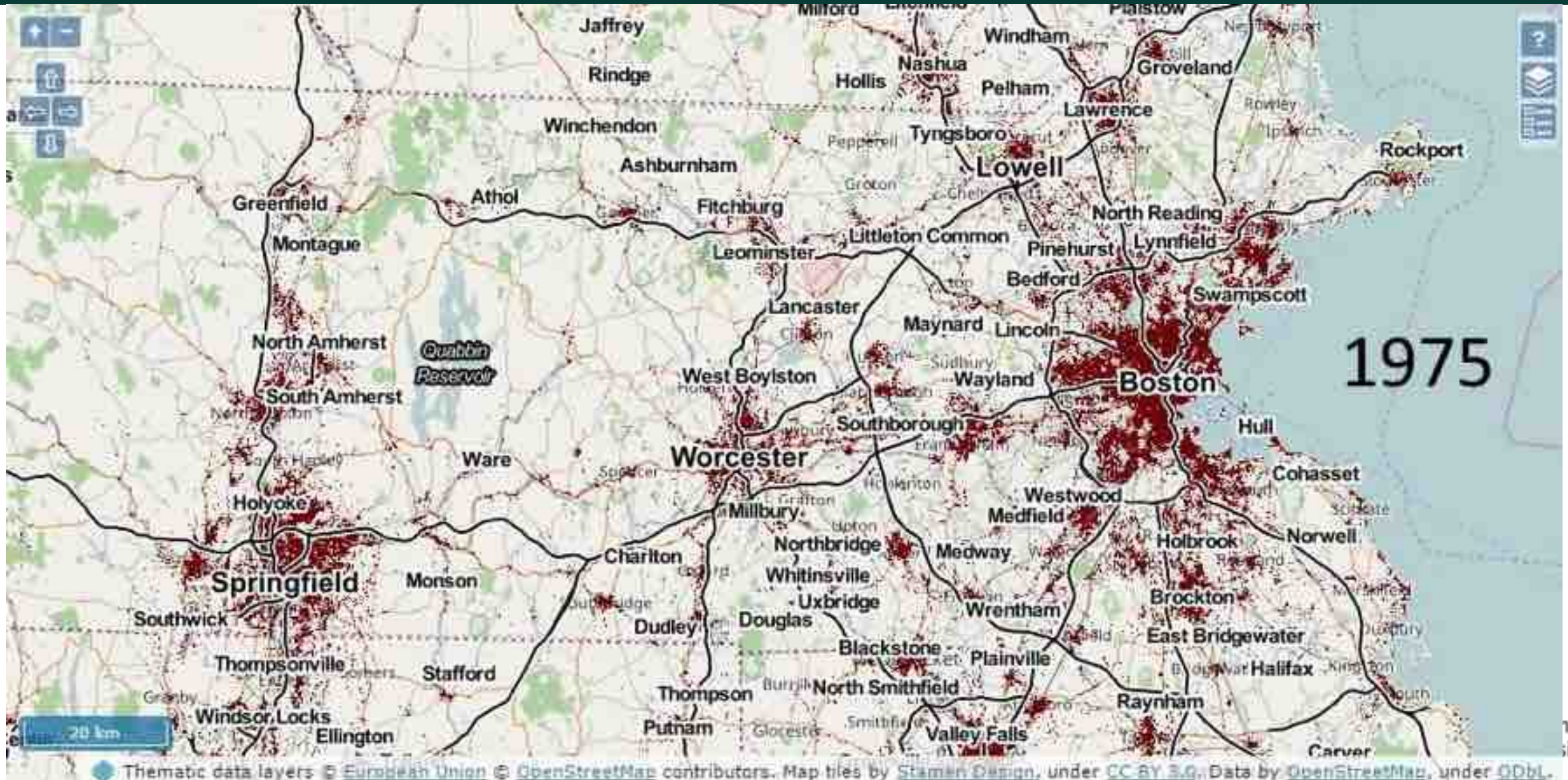
=

**Total population by 1km grid cell**

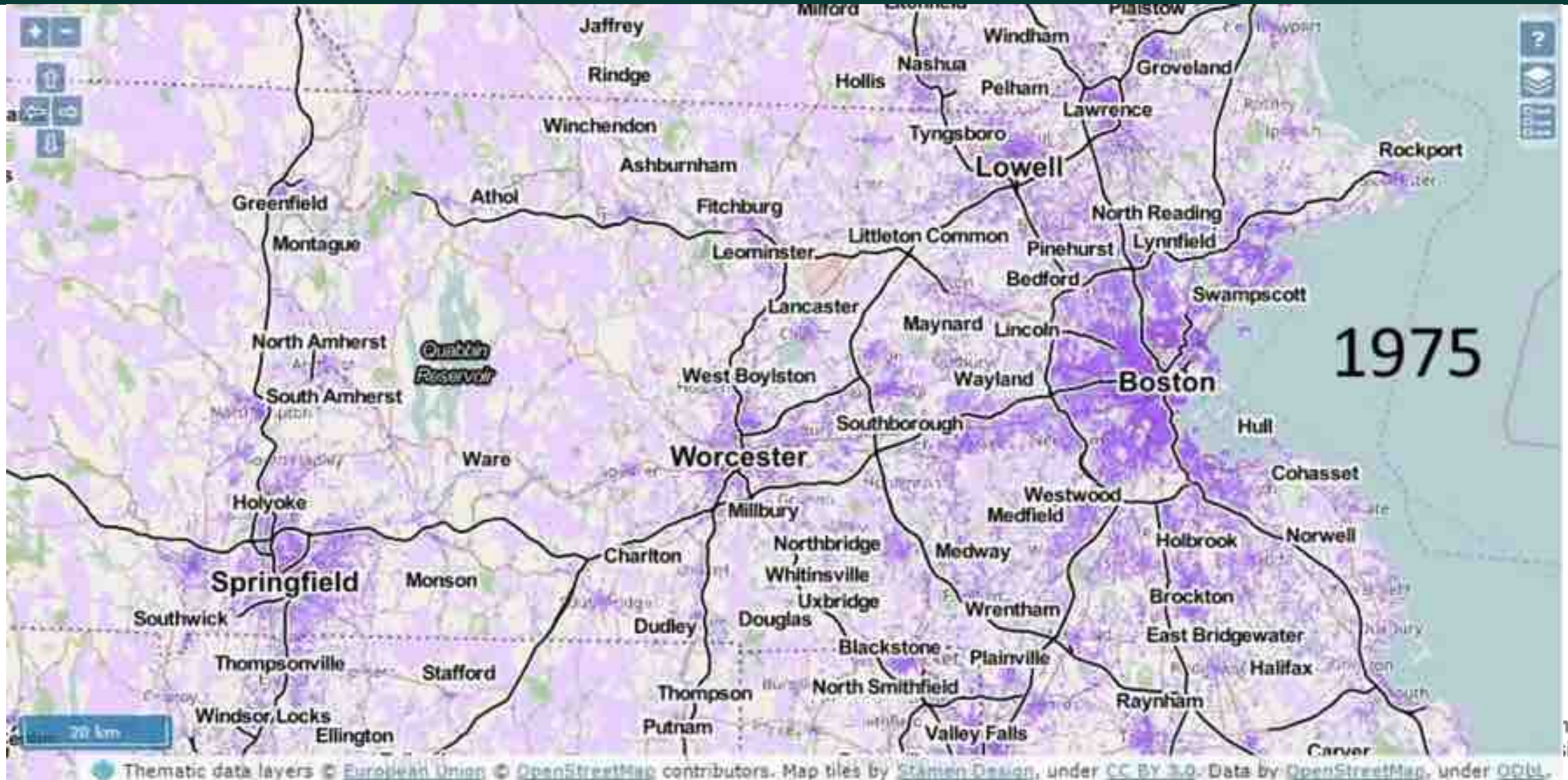


*Source: JRC GHS Pop*

# Mapping of built-up (1975-2015)

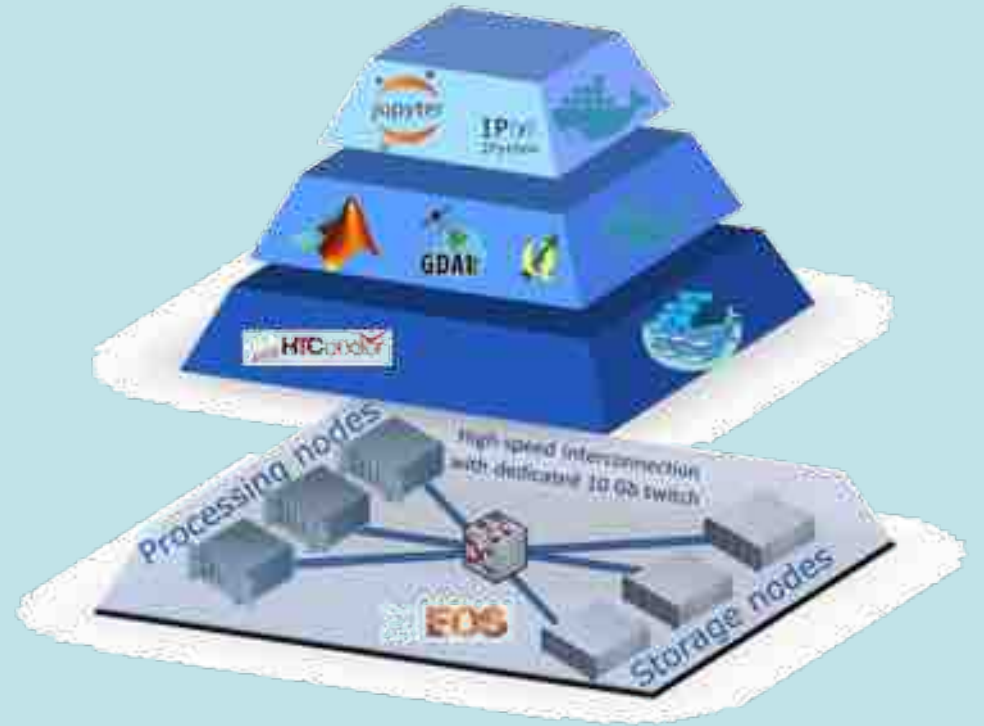


# Mapping of population (1975-2015)



# Advances in Big Data Processing

- Landsat data volume:
  - 32,808 data sets with a volume of **23 TB**
- Single computer: **210 days**
- Computer cluster: **2 weeks**
- JRC Earth Observation Data Processing Platform (JEODPP): **1 day**



# GEO Human Planet Initiative

- New initiative in the **GEO 2017-2019 work programme** supporting the GEO Strategic Plan 2016-2025.
- Aims to support novel evidence-based assessment of the **human presence on the planet Earth**.
- Leverages on **advances of Earth Observation technologies** and geo-spatial data analytics for improving the global awareness on the **spatial patterns** and **processes** of the today's urbanizing world.

# Human Planet Initiative Core Group





# Human Planet Working Groups

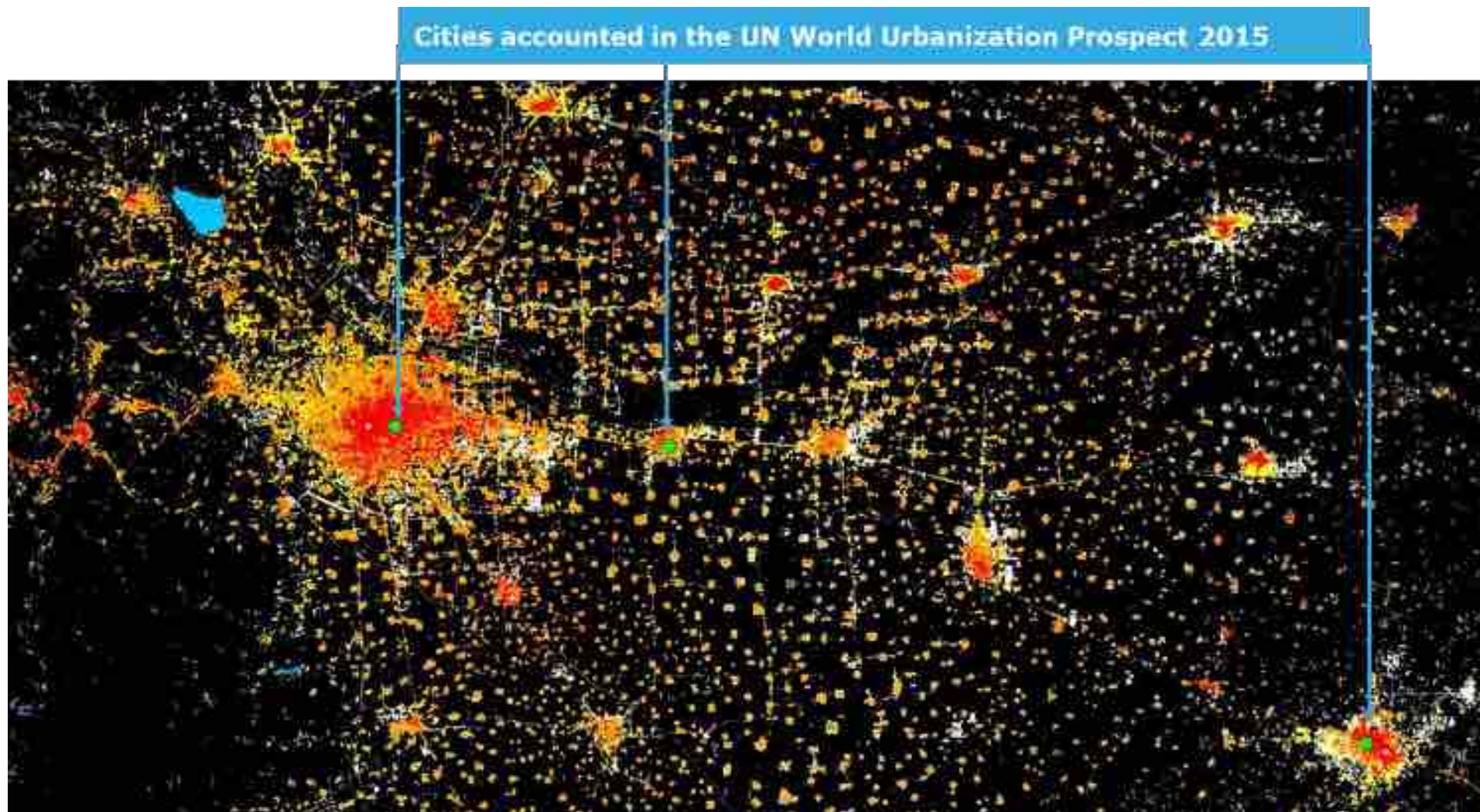
Human Planet Expert Group	Institution	Contact person
Global harmonized definition of cities and settlements	European Commission, DG for Regional and Urban Policy	L. Dijkstra
Global Settlements in Disaster Risk Reduction	UNOOSA, UN-SPIDER Program	J. Post
Global Urban Climate and Mitigation Planning	University of Dublin, World Urban Database and Access Portal Tool (WUDAPT)	G. Mills
Global updated and historical baseline data on built-up areas	European Commission, Joint Research Centre	T. Kemper
Global high resolution age-structured population maps 2000 - 2020	Univ. of Southampton, WorldPop Project, Flowminder Foundation	A.J. Tatem
Global Settlements, Infrastructure, and Population Data Intercomparison	Columbia University, Center for International Earth Science Information Network (CIESIN)	R. Chen
Global future population grids including demography and migration	City University New York, Demographic Research	D. Balk
Global urban metabolism	University of Denver, Geography & Environment	P. Sutton
Urbanization dynamics in China and the "one belt one road" region	Chinese Academy of Sciences, Institute of Remote Sensing and Digital Earth	L.L. Lu
Capacity building and trainee-ships	University of Twente, Faculty of Geo-Information Science and Earth Observation	R. Sliuzas
Poverty Mapping	George Washington University, Center for Urban and Environmental Research	R. Engstrom

# Human Planet Working Steering Committee

Contact person	Institution
ALAN BELWARD	European Commission, JRC
ANDREW J TATEM	University of Southampton
ANGEL SHLONO	New York University
ARBAE KHAN	UN Food and Agriculture Organization
BENJAMIN BECHTEL	University of Hamburg
ROBERT CHEN	Columbia University
CHAO REN	Chinese University of Hong Kong
DAVINA JACKSON	Goldsmiths University of London
DEBORAH BALK	City University of New York, Institute for Demographic Research
ELEN HAMILTON	The World Bank (WB)
EUGENIE L. BIRCH	University of Pennsylvania
GERALD MILLS	University College Dublin
GORA MBOUP	Global Observatory linking Research to Action (GORA)
JOACHIM POST	UN Office for Outer Space Affairs
LEWIS DIJKSTRA	European Commission, DG-REGIO
LINLIN LU	Chinese Academy of Sciences
MARK R. MONTGOMERY	Population Council
PAUL C. SUTTON	University of Denver
RICHARD SLIUZAS	University of Twente
SARA HERTOEG	UN Population Division, Department of Economic and Social Affairs
SHAROLYN ANDERSON	University of South Australia
STEFAN LEYK	Colorado University
STEFFEN FRITZ	International Institute for Applied System Analysis (IIASA)
THOMAS KEMPER	European Commission, JRC
TIMOTHY F TRAINOR	US Census Bureau, UN GGIM
VINCENT SEAMAN	Bill & Melinda Gates Foundation
MARC LEVY	Columbia University, Center for International Earth Science Information Network (CIESIN)
THOMAS ESCH	German Aerospace Center (DLR)
ROBERT NDUGWA	United Nations Human Settlements Programme (UN-Habitat)

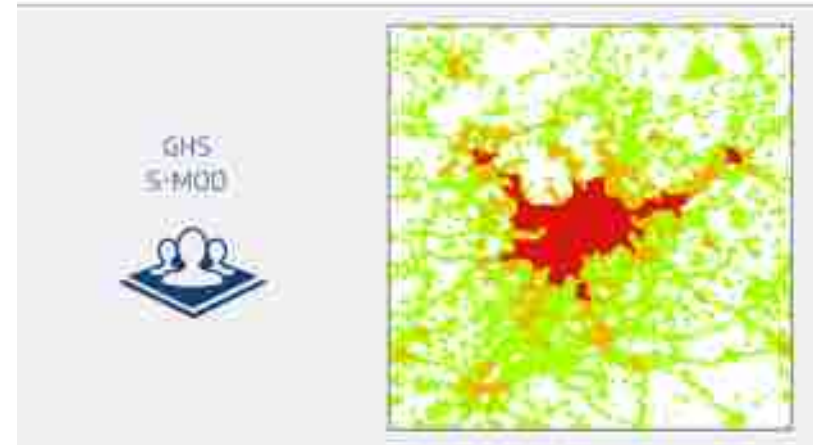
# Discovering new elements

(example Beijing, China)

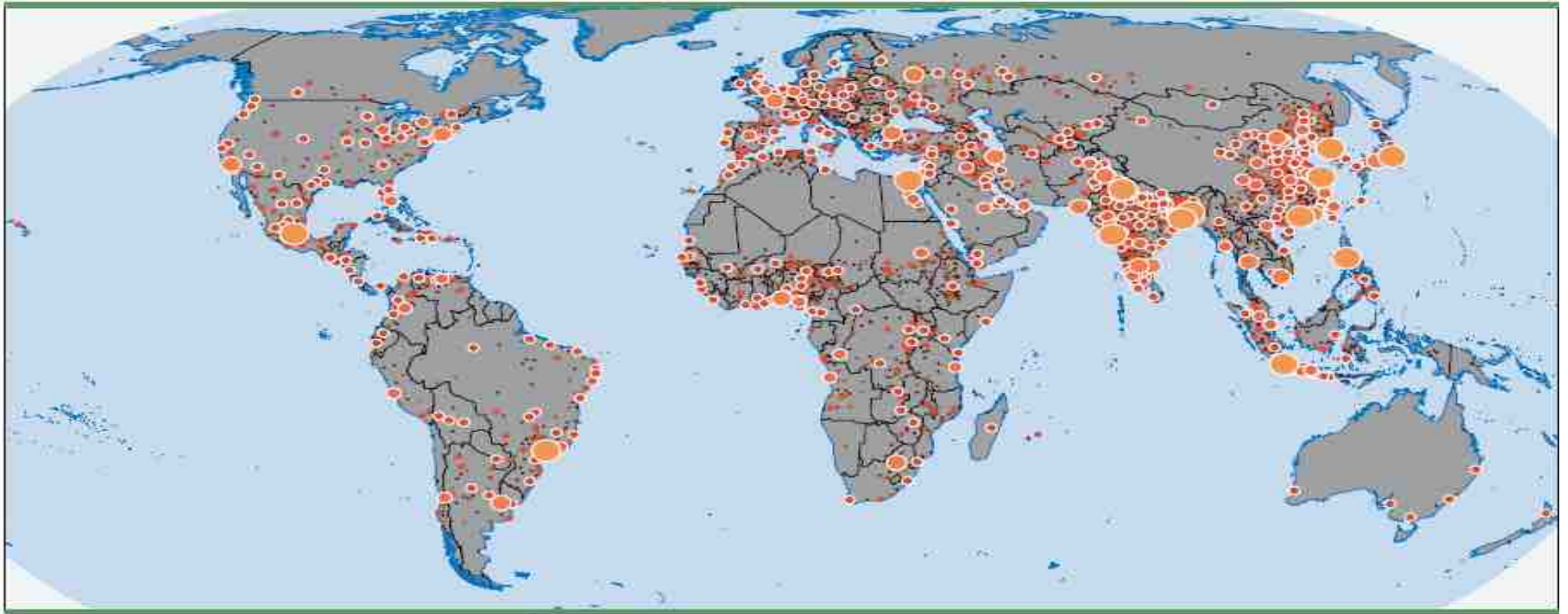


# Global Definition of Cities and Settlements

- Voluntary Commitment of the European Union, OECD, World Bank and FAO
- Evidence based policy support

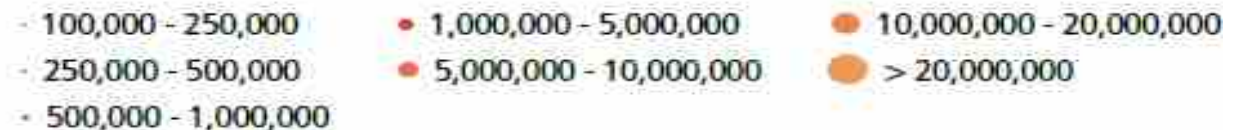


# Global Definition of Cities and Settlements



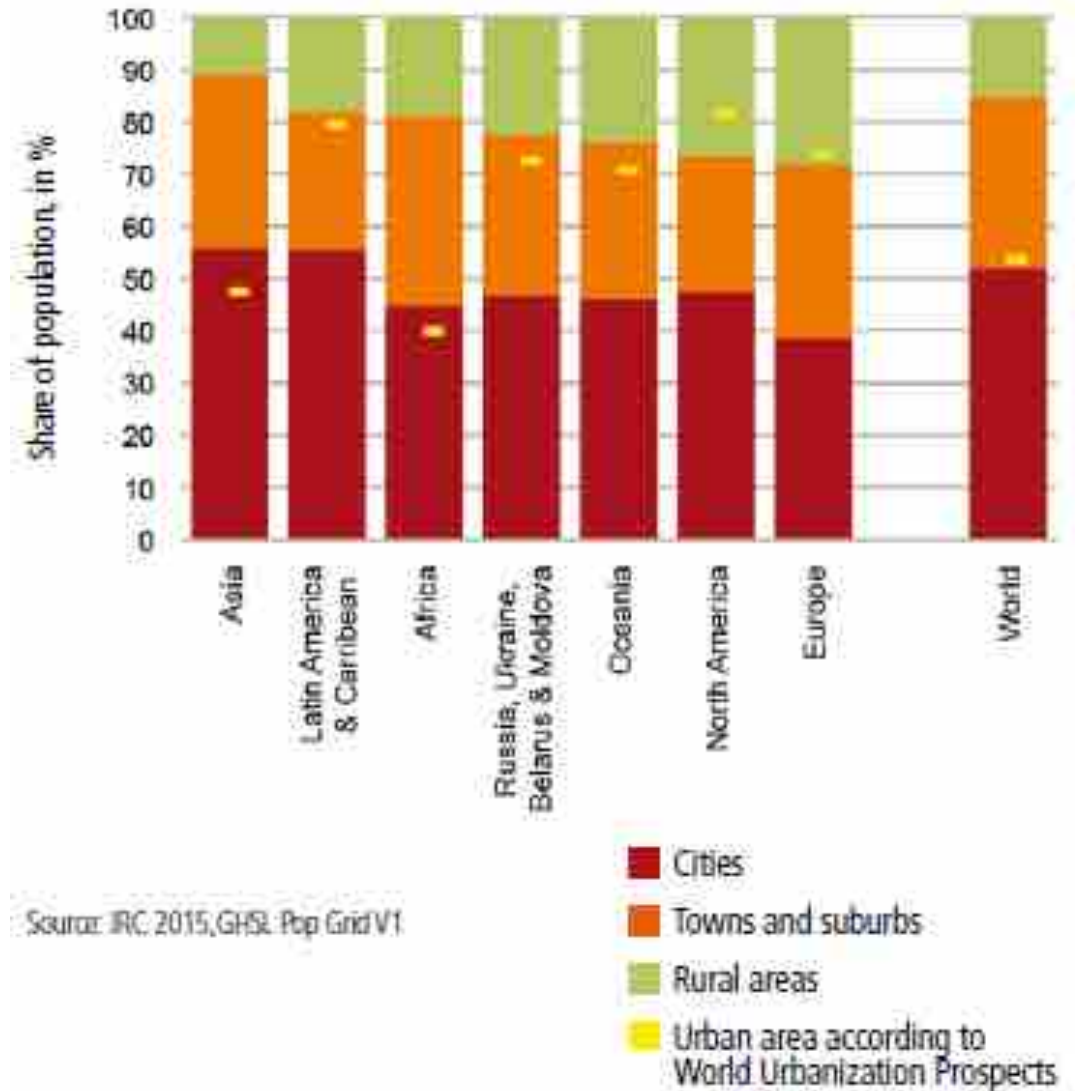
Source : JRC (GHS - POP Global Settlement Model)

## Inhabitants



# Global Definition of Cities and Settlements

- Major changes in the degree of urbanisation in Asia and Africa



# Conclusions

- Free and open data and methods
  - Leave no one behind
  - Create trust (reproducibility)
- Combination of EO data with non-EO data
- Networking outside the EO community is important



# Thanks

Any questions?

You can find me [thomas.kemper@ec.europa.eu](mailto:thomas.kemper@ec.europa.eu)

Joint Research Centre (JRC)  
Directorate E. Space, Security & Migration  
Disaster Risk Management Unit

<http://ghsl.jrc.ec.europa.eu>