



UNITED NATIONS
Office for Outer Space Affairs



Fourth United Nations International UN-SPIDER
Bonn Workshop on
Disaster Management and Space Technology:
“The 4C – Challenge: Communication – Coordination –
Cooperation – Capacity Development”

Organised by the

United Nations Office for Outer Space Affairs (UNOOSA)

and the

German Aerospace Center (DLR)

Bonn, Germany, 12 - 14 October 2010

Langer Eugen UN Campus, Hermann-Ehlers-Str. 10
D-53113 Bonn, Germany

USEFUL INFORMATION FOR PARTICIPANTS



Imprint: Dr. Jörg Szarzynski, UNOOSA/UN-Spider, E-mail: joerg.szarzynski@unoosa.org, Telephone:
+49 (0) 815 0677

Conference Information

Welcome to Bonn!



Based on the structures, experiences and the competence from almost 50 years of governmental responsibility the city of Bonn (www.bonn.de) was destined for its new role as an international scientific and communication centre after 1990. UN organisations, federal ministries and subordinate authorities, development organisations and non-governmental organisations with international orientation constitute a strong network.

Bonn has managed over the past decade to shape a new profile as the German City of the United Nations and a centre of international dialogue on key issues of the future. The Bonn UN Campus is a visible symbol of this development. Since July 1996, Bonn is entitled to call itself a **UN City**. Ten years later, in July 2006, Federal Chancellor Angela Merkel was able to hand over the new branch office of the United Nations to UN Secretary General Kofi Annan. The Federal Government had invested EUR 55 million into refurbishing the high-rise building which used to accommodate MP offices and is widely known by its nickname "**Tall Eugene – Langer Eugen**" (after the first name of a former President of Parliament). Sixteen of the seventeen UN units residing in Bonn are assembled under its roof. The other older MP office building is being rebuilt as an ecological pilot project to serve as the future seat of the UN Climate Secretariat (UNFCCC).

"The UN in Bonn - for sustainable development worldwide": this is the common denominator of the UN units in Bonn. The UN Campus provides to all of them ideal working conditions and an environment rich in synergies. A special advantage is the close neighbourhood to the International Congress Centre whose considerable extension will be completed by 2009, and to many other important partners. This is an excellent environment for co-operative action and for short-cut contacts. UN organisations, Federal Ministries and Federal Agencies, about 150 Non-Governmental Organisations, Research Institutions and the resident economic Global Players determine the character of Bonn as an international location. Increasingly, the city is turning into a hub of a network whose actors focus on the issues of sustainable and humane development.

Further information is available under:

http://www.bonn.de/wirtschaft_wissenschaft_internationales/uno-stadt/index.html?lang=en

1. Venue & getting there

The workshop is to be held at the UN Campus – Langer Eugen. It offers excellent conferencing facilities, as well as a canteen with international cuisine and a cafeteria. Additional rooms will be accessible for parallel sessions and discussion groups.



Postal Address:

UN-SPIDER

UN Campus
Hermann-Ehlers-Str. 10
53113 Bonn
Germany

By air:

from Cologne/Bonn airport (Flughafen Koeln/Bonn):

- Airport-shuttle-bus No 670 towards Bonn Hauptbahnhof (main railway station)
- Underground (U-Bahn) line 16, 63 or 66 towards Bad Godesberg /Koenigswinter
- Heussallee stop, exit "Deutsche Welle"
- When you reach the street go straight ahead until you reach Hermann-Ehlers-Str. and the UN Campus

Please check the following webpage on more information about Bonn/Cologne Airport and how to get there: <http://www.koeln-bonn-airport.de/index.php>

The airport is well connected to the city centre by **Airport-shuttle-bus No SB60** leaving from Terminal 2 every twenty minutes (a single ticket is 6.70 €). It is also possible to rent a car or take a taxi, of course. The distance between airport and main train station is around 30 km.

By railway/underground:

from Bonn Hauptbahnhof main station:

- Underground (U-Bahn) line 16, 63 or 66 towards Bad Godesberg /Koenigswinter
- Heussallee stop, exit "Deutsche Welle"
- When you reach the street go straight ahead until you reach Hermann-Ehlers-Str. and the UN Campus

By train:

In case you intend to come by train; this is the best webpage for looking up train connections: <http://reiseauskunft.bahn.de/bin/query.exe/en>

However, they normally won't state prices if you arrive from a foreign country. Ask your travel agent for the best deals. Booking more than 7 days before the departure date can give considerable discounts depending on the train and availability.

By car:

If you come by car, use a route planner to find your way to the UN premises and to your hotel, for example [Google maps](#).

Frankfurt/Hannover/Ruhrgebiet:

- A3 motorway to Bonn/Siegburg intersection
- A560 motorway towards Bonn until St. Augustin junction
- A59 motorway towards Bonn-Bad Godesberg until Bonn-Ost (42) intersection
- A562 motorway, keep right until exit (Anschlussstelle) Bonn-Rheinaue
- Turn right onto Franz-Josef-Strauss-Allee towards Bonn-Rheinaue
- First exit on the right into Charles-de-Gaulle-Str
- Follow the road and pass the Post Office area
- When you reach the Rhine, the first exit on the left is the Hermann-Ehlers-Str
- Follow Hermann-Ehlers-Str until you reach the UN Campus

coming from the South-West of the Rhine:

- A61 motorway until Meckenheim intersection
- A565 motorway towards Bonn
- Poppelsdorf exit, towards Bad Godesberg (B9)
- After "Reuterbruecke"-Bridge keep right and follow the road to the right into Adenauerallee
- Second exit on the left towards the Heussallee
- At the second traffic lights turn right into Kurt-Schumacher-Str.
- First exit on the left into Franz-Josef-Strauss-Str.
- Then use the next possibility to exit on the left and turn into Charles-de-Gaulle Str
- Follow the road and pass the Post Office area
- When you reach the Rhine, the first exit on the left is the Hermann-Ehlers-Str.
- Follow Hermann-Ehlers-Str until you reach the UN Campus

Note for Visitors:

There is hardly any possibility to park your car directly at the UN Campus. However, if required, you can leave your car on one of the parking areas you pass along the Charles-de-Gaulle-Straße. Parking is not permitted opposite the UN entrance in Hermann-Ehlers-Straße.

2. Hotel information

In order to secure rooms for all outside guests rooms were blocked in different hotels. We strongly recommend booking your room as soon as possible. Please contact the hotel directly to make your reservation informing them that you are a participant of the UNOOSA/DLR "**UN-SPIDER Workshop**" in order to receive the rate below.

Information for **fully-funded participants**: You do not need to book any of the hotels as the organisers will make the reservation for you and will then inform you which hotel you should go. If you have not received this information please contact: Dr. Jörg Szarzynski, UNOOSA/UN-SPIDER, United Nations Office at Bonn, Tel: +49-815 0677, Fax: +49-8150699, email address: joerg.szarzynski@unoosa.org.

Room rates are per night, including breakfast, service and taxes. All rooms are equipped with private bathrooms, cable TV, and telephone.

Hotel	No. of rooms blocked	Rate (EUR)	Contact	Deadline for booking	Timeframe
Eden am Hofgarten	4 x 3 bed room 2 x 1 bed room 5 x 2 bed rooms	110.00 80.00 95.00	Ms. Dienst, reservierung@eden-bonn.de , +49(0)228 289710	6 Sept. 2010	11-14 Oct. 2010
Eden am Kurpark	20	80.00	Ms. Dippe, rezeption@eden-godesberg.de , +49(0)228 957270	6 Sept. 2010	11-14 Oct. 2010

Kurfuerstenhof	20	82.00	Ms. Donat, +49(0)228 985050	6 Sept. 2010	11-14 Oct. 2010
Villa Esplanade	4	89.00	Mr. Schmitz, +49(0)228 983800	6 Sept. 2010	11-14 Oct. 2010
Mozart	15	72.00	Ms. Forst, +49(0)228 659071	6 Sept. 2010	11-14 Oct. 2010
Guennewig	10	105.00	Ms. Moers, +49(0)228 2697703	6 Sept. 2010	11-14 Oct. 2010

The following links provide some more information on the hotels:

Hotel Eden am Hofgarten: Am Hofgarten 6, D-53113 Bonn, Phone: +49 (0) 228 289710, Fax: +49 (0) 228-225070, http://www.eden-bonn.de/Hotel_Eden_Startsite.html

Hotel Eden am Kurpark: Am Kurpark 5a, D-53177 Bonn-Bad Godesberg, Phone: +49 (0) 228 957270, Fax: +49 (0) 228-362494, http://www.eden-godesberg.de/Eden_Bonn_Startsite.html

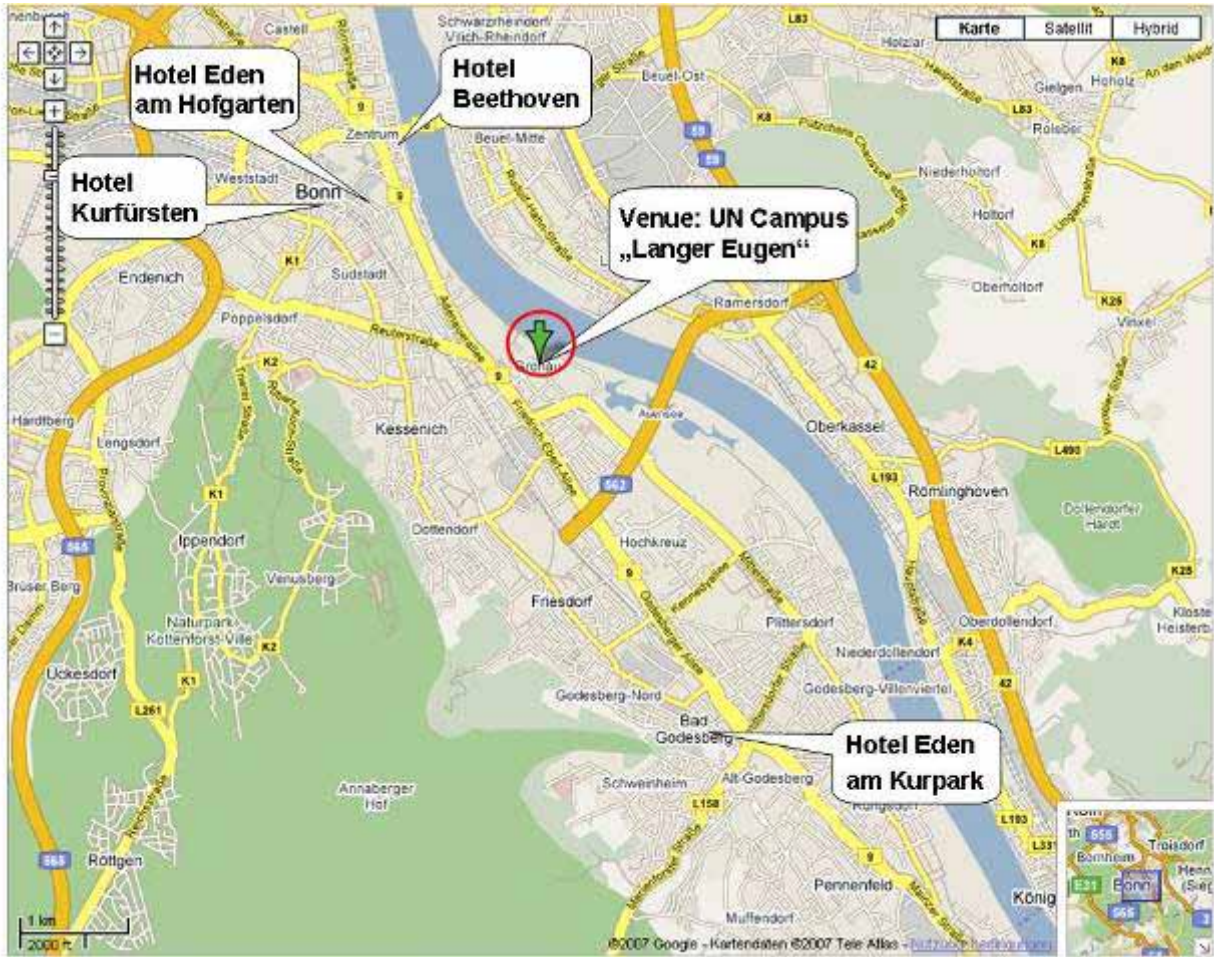
Hotel Kurfürstenhof: Baumschulallee 20, D-53115 Bonn, Phone +49 (0) 228 98505-0, Fax +49 (0) 228 632045, http://www.kurfuerstenhof-bonn.de/kurfuerstenhof_startsite.html

Hotel Mozart: Mozartstr. 1, 53115 Bonn, Phone +49 (0) 228 659071, Fax +49 (0) 228 659075, <http://www.hotel-mozart-bonn.de/>

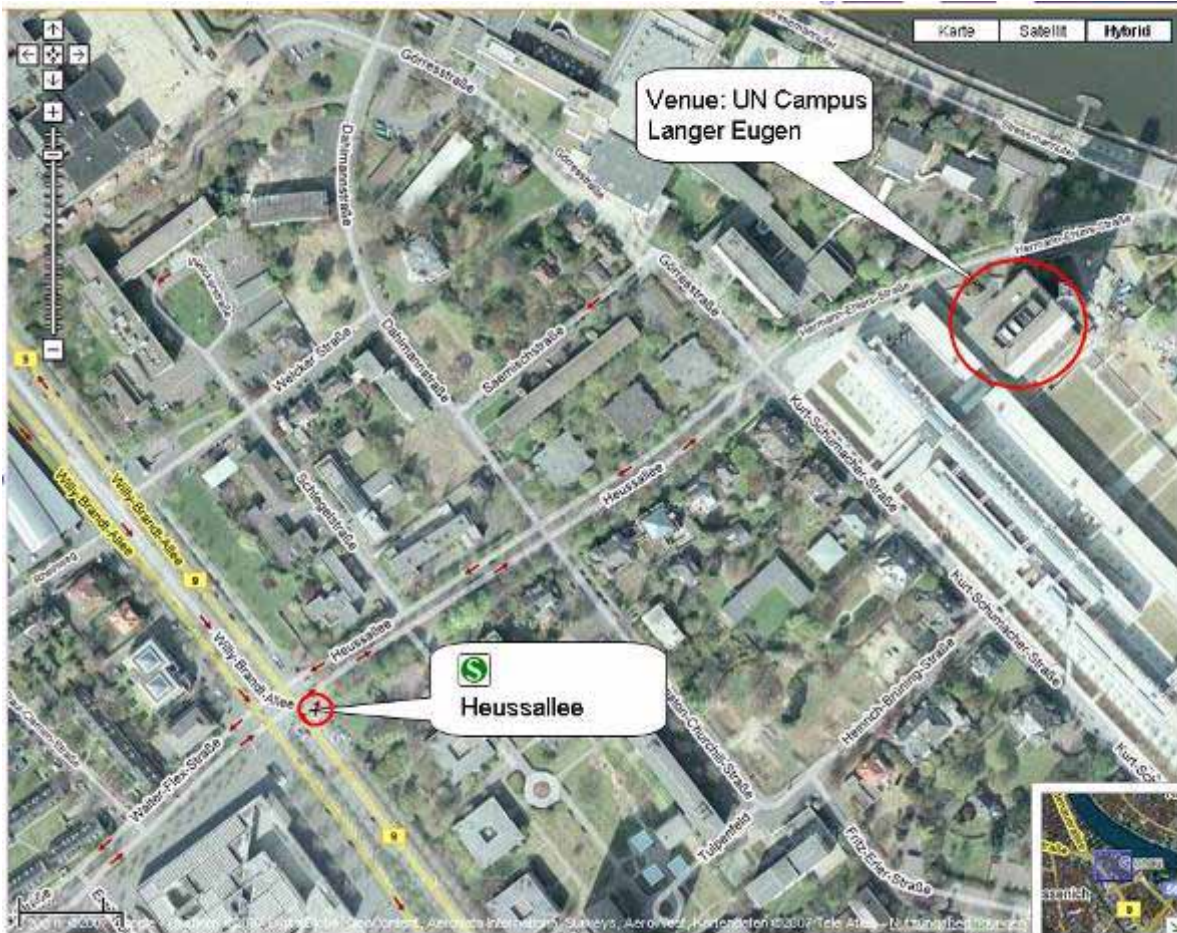
Hotel Villa Esplanade: Colmantstr. 47, 53115 Bonn, Phone +49 (0) 228 98380-0, Fax +49 (0) 228 98380-11, <http://www.hotel-villa-esplanade.de/>

Hotel Guennewig Residenz, Kaiserplatz 11, 53113 Bonn, Phone.: +49 (0) 2 28 - 26 97-0, Fax: +49 (0) 2 28 -26 97-7 77, E-Mail: hotel.residence@guennewig.de, http://www.guennewig.de/bnreside/homepage_e.php


For **late comers:** You have not managed to secure any of the blocked rooms or you are looking for something else? Please try the following link to book online. <http://www.bonn-region.de/english/hotels/booking-hotels-online.html>



It is not difficult to predict how much time you will need to travel within Bonn. The following descriptions are estimates based on the route from the different hotels to the UN Campus.



1.) From **Hotel Eden am Hofgarten**:

Guests from the **Hotel Eden am Hofgarten** will also need to go to the Underground (S-Bahn) Station: **“Universität/Markt”** (indicated by this sign ). Please leave the hotel to the left and follow the street **Am Hofgarten**. Turn right into **Regina-Pacis-Weg** and continue until the crossing **Regina-Pacis-Weg / Stockenstrasse**. The S-Bahn station is located just on the other side of the road. Expect to take around **10 min** for this walk. Take the S-Bahn (**S16**) in the direction **“Bad Godesberg Stadthalle”** or (**S63**) in the direction **“Bad Godesberg”** and leave at the station **“Heussallee/Museumsmeile”**. Leave the S-Bahn station with direction to the River Rhine and just follow the **Heussallee**, pass the **Kurt-Schumacher Straße** and after 300 m on the **Hermann-Ehlers-Straße** you will reach the UN Campus on the right hand.

1. Trip		Trip Overview		
Station/Stop	At	From	Travel with	Direction
Bonn, Am Hofgarten 6	-	08:02		
BONN, Universität/Markt	08:05	-		
BONN, Universität/Markt	-	08:05	 16	Bad Godesberg Stadthalle
BONN, Heussallee/Museumsmeile	08:09	-		
BONN, Heussallee/Museumsmeile	-	08:09		
Bonn, Hermann-Ehlers-Str. 10	08:20	-		
Preisstufe K [Kurzstrecke] 1.40 Euro				

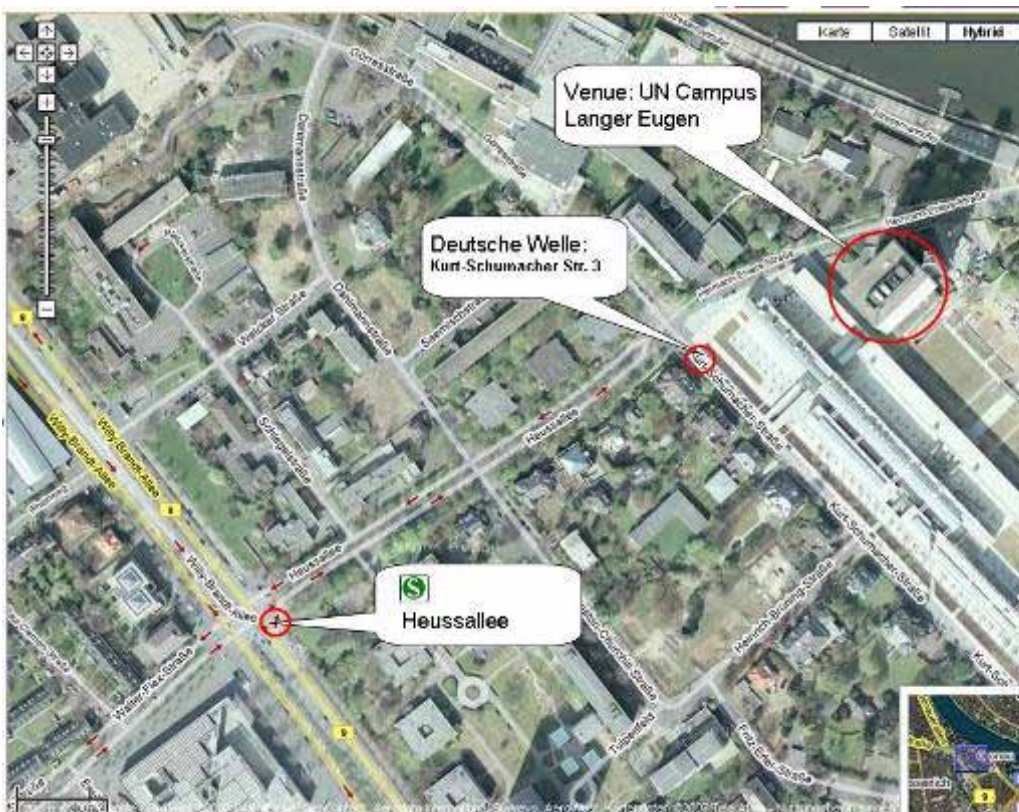
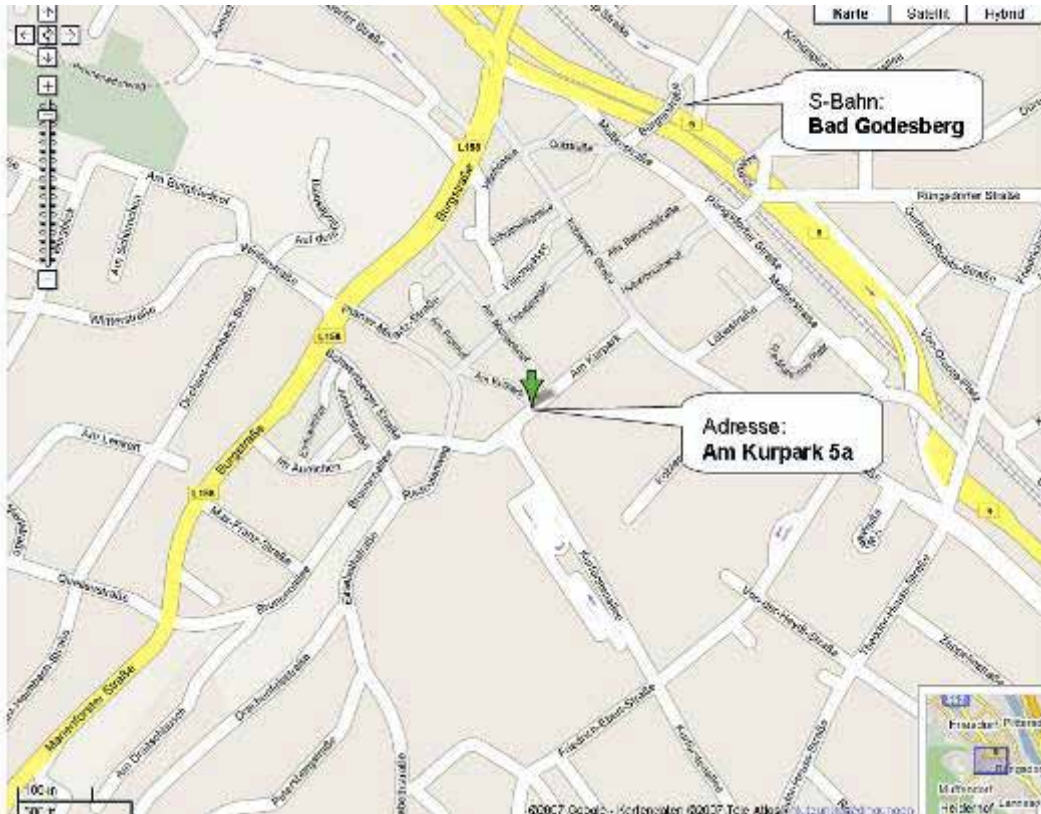


2.) From **Hotel Eden am Kurpark (Bad Godesberg)**:

1. Trip		Trip Overview		
Station/Stop	At	From	Travel with	Direction
Bonn, Am Kurpark 5a	-	08:04	🚶	
BONN, Am Kurpark	08:07	-		
BONN, Am Kurpark	-	08:07	🚌 610	Bonn Hauptbahnhof (ZOB) - B4
BONN, Deutsche Welle	08:28	-		
BONN, Deutsche Welle	-	08:28	🚶	
Bonn, Hermann-Ehlers-Str. 10	08:31	-		

Preisstufe 1b [CityTicket (Köln oder Bonn)] 2.30 Euro

Guests from the **Hotel Eden am Kurgarten** in **Bad Godesberg**, a southern district of Bonn city, have two possibilities. Firstly, you may take the bus No. 610, direction to **“Bonn Hauptbahnhof”**. The bus station is very near to the Hotel in the street **“Am Kurgarten”**. You have to leave the bus at the stop **“Deutsche Welle”**. From there you just have to turn right into the Hermann-Ehlers Straße to get to the UN Campus.



The second possibility is to take the bus No. 856, direction "**Rheinallee**" to Bad Godesberg Bahnhof (train station). From there you can take the S-Bahn (**S63**), direction "**Brühler Str.**" or "**Bonn Hauptbahnhof**", until the station "**Heussallee/Museumsmeile**". Leave the S-Bahn station with direction to the River Rhine and just follow the **Heussallee**, pass the **Kurt-Schumacher Straße** and after 300 m on the **Hermann-Ehlers-Straße** you will reach the UN Campus on the right hand.

4. Trip		Trip Overview		
Station/Stop	At	From	Travel with	Direction
Bonn, Am Kurpark 5a	-	08:25	🚶	
BONN, Am Kurpark	08:28	-		
BONN, Am Kurpark	-	08:28	🚊 856 Rheinallee	
BONN, Bad Godesberg Bf	08:29	-		
BONN, Bad Godesberg Bf	-	08:35	🚊 63 Brühler Str.	
BONN, Heussallee/Museumsmeile	08:45	-		
BONN, Heussallee/Museumsmeile	-	08:45	🚶	
Bonn, Hermann-Ehlers-Str. 10	08:56	-		

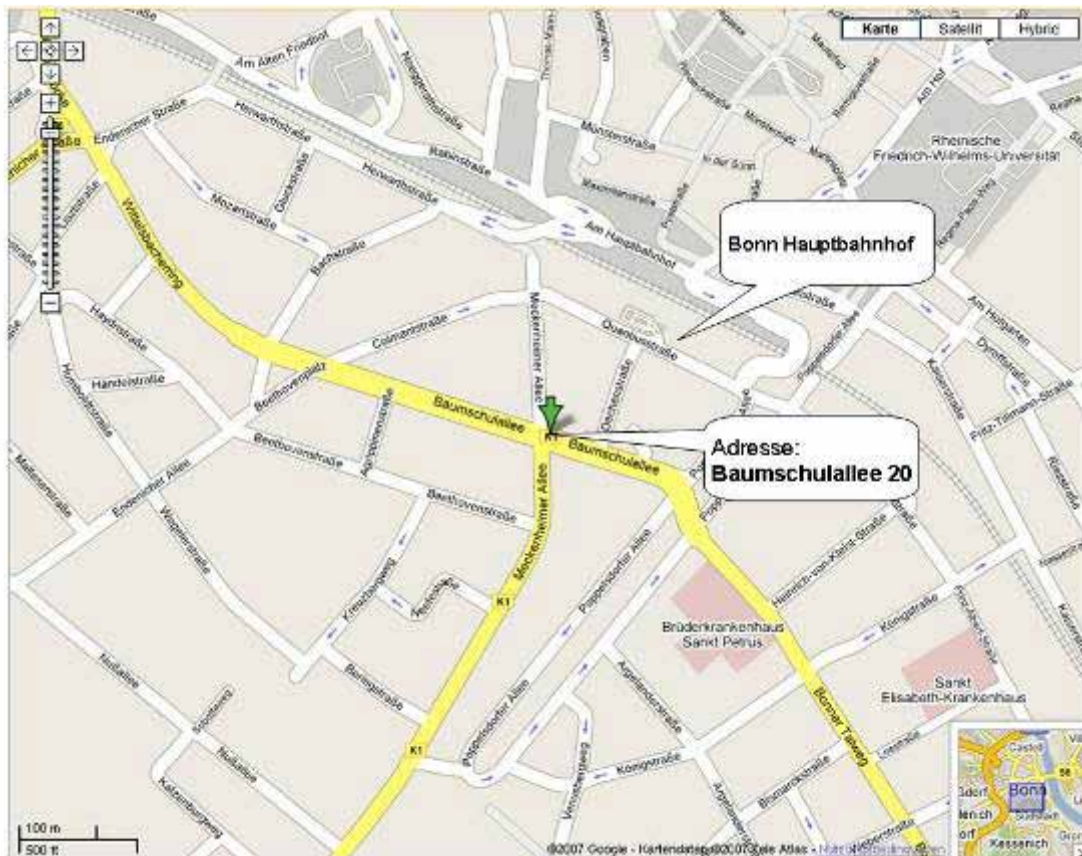
Preisstufe 1b [CityTicket (Köln oder Bonn)] 2.30 Euro

3.) From Hotel Kurfürsten

3. Trip		Trip Overview		
Station/Stop	At	From	Travel with	Direction
Bonn, Baumschulallee 20	-	08:19	🚶	
BONN, Bonn Hauptbahnhof (U)	08:24	-		
BONN, Bonn Hauptbahnhof (U)	-	08:24	🚊 16 Bad Godesberg Stadthalle	
BONN, Heussallee/Museumsmeile	08:29	-		
BONN, Heussallee/Museumsmeile	-	08:29	🚶	
Bonn, Hermann-Ehlers-Str. 10	08:40	-		

Preisstufe 1b [CityTicket (Köln oder Bonn)] 2.30 Euro

Guests from the **Hotel Kurfürsten** will need to go to “**Bonn Hauptbahnhof**” via “**Meckenheimer Allee**” and “**Quantiusstraße**”. Take the S-Bahn (**S16**) in the direction “**Bad Godesberg Stadthalle**” or (**S63**) in the direction “**Bad Godesberg**” and leave at the station “**Heussallee/ Museumsmeile**”. Leave the S-Bahn station with direction to the River Rhine and just follow the “**Heussallee**”, pass the “**Kurt-Schumacher Straße**” and after 300 m on the “**Hermann-Ehlers-Straße**” you will reach the UN Campus on the right hand.



3. Public transport

It is easy to get around in Bonn as its public transport is well developed. You can choose between suburban trains (S-Bahn), subway (U-Bahn), trams and buses.

The SWB (Stadtwerke Bonn; Public Transport and Tariff Association) offers an electronic itinerary planner finding the quickest way to get from Point A to Point B. It is possible to search by stops or by streets and numbers. As a result it will tell you where and when to change and display your route on a map.

http://www.swb.bonn.de/English_Version.63.0.html
<http://www.stadtwerke-bonn.de/index.php?id=556>

There are several ticket options for using public transport in Bonn. For getting from S-Bahn stop "**Universität/Markt**" to the conference location you will need a ticket for **Zone K**. A single ticket for **Zone K** is **1.60 €**. From "**Bonn Hauptbahnhof**" (main train station) to the venue you will need a ticket for **Zone 1b**. A single ticket for **Zone 1b** is **2.40 €**. A day ticket which will allow you to make use of public transport in **Zone 1-4** is about **5 to 6 €**.

We are still negotiating with the City of Bonn to arrange **discounted SWB Congress Tickets** for all participants and we will keep you informed about the progress.

4. Visa application

Visitors from some countries are required to apply for a visa before coming to Bonn. On the following webpage you can find out whether you will need a visa to attend the workshop.

[http://www.auswaertiges-
amt.de/diplo/en/WillkommeninD/EinreiseUndAufenthalt/StaatenlisteVisumpflicht.html](http://www.auswaertiges-amt.de/diplo/en/WillkommeninD/EinreiseUndAufenthalt/StaatenlisteVisumpflicht.html)

The next webpage gives general advices for visa applications. Please make sure that you apply well in time. You can download the application forms in several languages on this webpage as well.

[http://www.auswaertiges-
amt.de/diplo/en/Infoservice/FAQ/VisumFuerD/03-
Antragsformular.html](http://www.auswaertiges-amt.de/diplo/en/Infoservice/FAQ/VisumFuerD/03-Antragsformular.html)

You will need to send your application to the mission/consulate responsible for the country you are from or where you have taken up permanent residentship. Check the following webpage for location and address for the missions/consulates that are of relevance for you.

[http://www.auswaertiges-
amt.de/diplo/de/Laenderinformationen/DtAuslandsvertretungen-
Laenderauswahlseite.jsp](http://www.auswaertiges-amt.de/diplo/de/Laenderinformationen/DtAuslandsvertretungen-Laenderauswahlseite.jsp)

Please contact **Dr. Joerg Szarzynski**, UNOOSA/UN-SPIDER, United Nations Office at Bonn, Tel: +49-8150677, Fax: +49-8150399, email address: joerg.szarzynski@unoosa.org if you need to submit any official documents or need any other assistance for your Visa application.

5. Health

Please make sure that your health/life/travel insurance covers any medical treatments that might become necessary. UNOOSA and DLR will not assume any responsibility for life and major health insurance, nor for expenses related to medical treatment or accidental events.

There are several general hospitals in Bonn. In case you need special medical assistance or medication while you are attending the workshop, contact any of them through their webpage in order to identify the one that is specialised in your medical condition.

Universitätsklinikum Bonn (English translation available):

Sigmund-Freud-Straße 25
53105 Bonn
Telefon 0228 / 287-0
<http://www.ukb.uni-bonn.de>

Gemeinschaftskrankenhaus Bonn (Haus St. Elisabeth):

Prinz-Albert Str. 40
53113 Bonn
Telefon 0228 / 508-0
Fax 0228 / 508-1508
<http://www.gk-bonn.de>

St. Marien-Hospital

Robert-Koch-Straße 1
53115 Bonn
Telefon 0228 / 505-0
Fax 0228 / 505-2019

<http://www.marien-hospital-bonn.de>

If you require any further assistance e.g. contact addresses for specialists or if you have any special needs, please do not hesitate to contact **Dr. Joerg Szarzynski**, UNOOSA/UN-SPIDER, United Nations Office at Bonn, Tel: +49-815 0677, Fax: +49-8150699, email address: joerg.szarzynski@unoosa.org.

6. General tourist information

Tourist Information Bonn

Address:

Windeckstraße 1 / near Münsterplatz
53111 Bonn

Tel.: +49 2 28 / 77 50-00 or 19433

Fax: +49 2 28 / 77 50-77

Email: bonninformation@bonn.de

Web: http://www.bonn.de/tourismus_kultur_sport_freizeit/tourist_information/index.html

Opening hours: Mon-Fri 9 a.m. - 6.30 p.m., Sat 9 a.m. - 4 p.m., Sun and public holidays 10 a.m. - 2 p.m.

In case you arrive on Saturday, 27th or Sunday, 28th you might want to go for a little sightseeing tour in Bonn. The city offers various interesting sights and events for tourists.

You can go on guided tours by bus, by bike, on foot, by limousine.

The following webpage gives detailed information what types of sightseeing tours are available: <http://www.bonn-region.de/english.html>

Bonn offers several arts museums, ranging from medieval to contemporary art and many galleries. If you are an arts lover, you should check the following webpage for more information on the Bonn arts scene: <http://www.bonn-region.de/english/culture-art.html>

When it comes to sports Bonn offers something for all tastes and ages, from a relaxing walk at the foot of the Siebengebirge to a marathon run.

http://www.bonn.de/tourismus_kultur_sport_freizeit/sport_in_bonn/index.html?lang=en

For events like concerts, exhibitions, musical etc. check the following webpage:

http://www.bonn.de/tourismus_kultur_sport_freizeit/bonn_ist_kultur/index.html?lang=en

If you feel like going to the cinema, try the following page.

http://www.bonn.de/tourismus_kultur_sport_freizeit/kino/index.html?lang=de

Shopping in Bonn: Practically the entire city centre is a pedestrian shopping centre. Between the railway station, the City Hall (Stadthaus), the Old Town Hall and Sterntor gate you can shop undisturbed, whether in large department stores, in clothing shops or in speciality shops of all kinds (fashion, high-tech, electronics, jewellery, sports equipment, delicatessen etc.). In the pedestrian zone and the shopping malls Kaiserpassage, Cassius-Passage, Stern-Passage and Friedensplatz-Passage) you will find an ideal shopping paradise, dotted with quaint peaceful squares with many cafés and restaurants. You will also find nice and varied shopping centres and pedestrian precincts in the other districts of Bonn (Bad Godesberg, Beuel, Hardtberg)

The opening hours differ, but are roughly as follows:

Monday - Friday 9 / 10 a.m. - 8 p.m.

Saturday 9 a.m. - 4 / 6 p.m.

Shops are open until 6 / 8 p.m. on the four Saturdays leading up to Christmas. Larger department stores remain open until 8 p.m. on weekdays. Outside the city centre, smaller establishments may close at midday and at noon or 2 p.m. on Saturdays.

7. Registration details

Registration will start Tuesday, 12th at 8:30 a.m. and will continue until 11:00 a.m.. **Please arrive in good time** and bring with you your invitation letter, a valid identity card, passport or other identification document with a photograph. Security is commonly strict and only participants that arrive with their letter and their ID will be allowed to enter the UN Campus. Large bags will not be allowed into the building, but can be stored at the entrance for the duration of your visit.

At registration you will receive a welcome package containing the programme and other information on the conference, as well as a street map and some tourist information leaflets.

8. Currency

In most parts of Europe the **Euro** is used as currency these days (€). Current exchange rate is 1 € - 1.27 US Dollar (as of 26/08/2010).

Bonn's banks and savings banks (Sparkassen) offer services to meet all of your banking needs, including foreign currency transactions, securities business and customer investment advice. Most credit institutions also offer building loan savings plans, building finance, life insurance and real estate brokerage services. The post office also offers banking services. All banks are under state supervision. Banking hours are generally 8 a.m. to 4 p.m. on workdays with a 1 ½ hour break for lunch. Most banks remain open until 6 p.m. on Thursdays and close at 3 p.m. on Fridays. Automatic teller machines provide cash dispensing services to bank card holders 24 hours a day.

In most shops you will be able to pay with credit card and there are numerous cash machines throughout the town – **including the conference building** - where you can withdraw cash.