

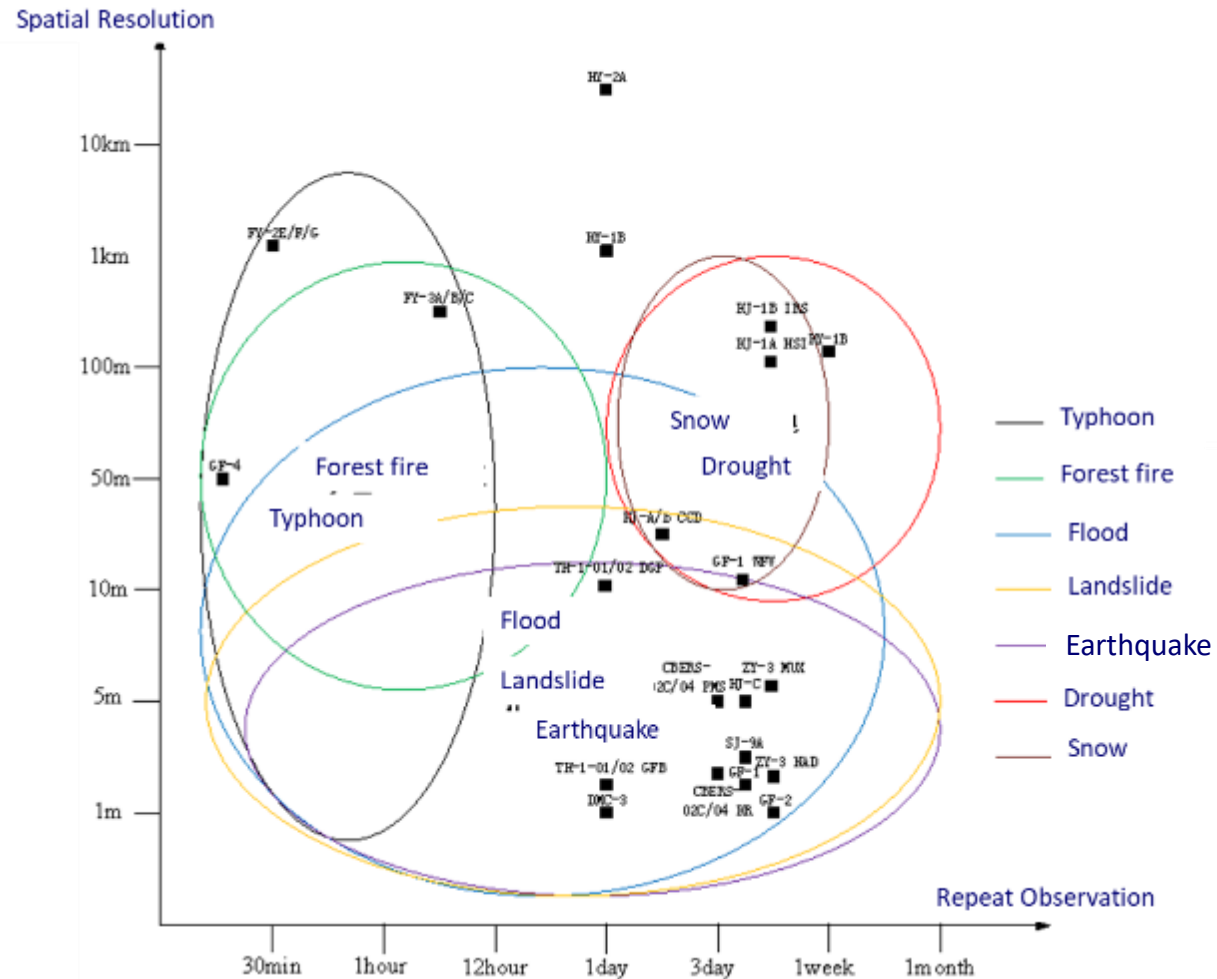


Flood and Drought Monitoring

Ming Liu

**National Disaster Reduction Center of China,
Ministry of Emergency Management, P. R. China**

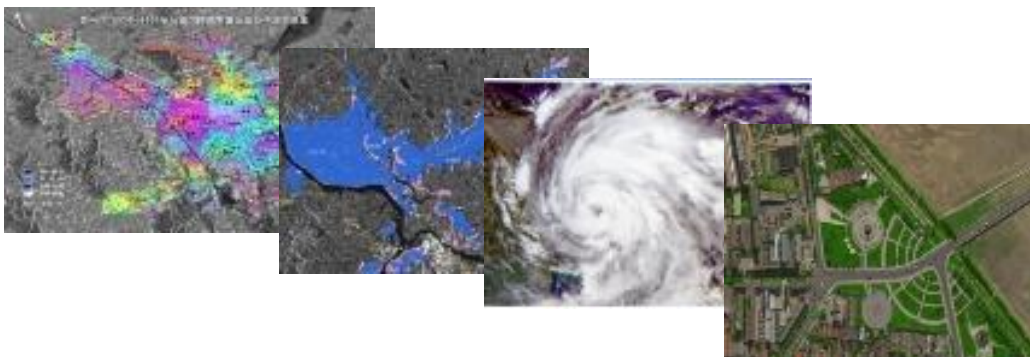
RS on Disaster Management





RS on Disaster Management

● Disaster Risk Monitoring



Moderate Spatial Resolution
Multi-indicator detection
Wide Observation
Repeat Observation

● Emergency Monitoring

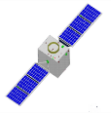


Moderate to High Spatial
Resolution
Multi-Weather Observation
Rapid Response



Chinese Civil Satellites

HJ-2 (Environment and Disaster Monitoring) constellation



HJ-2AB 16m (VIR-NIR)



China High-resolution Earth Observation System

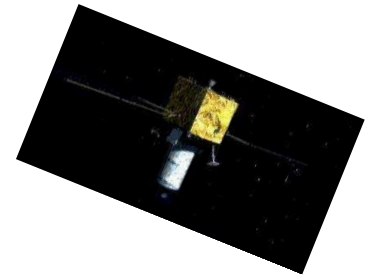
GF-1 2m(PAN), 8m(MSS), 16m(WFV)

GF-2 1m(PAN), 4m(MSS)

GF-3 C-Band SAR

GF-4 50m Geo-synchronous

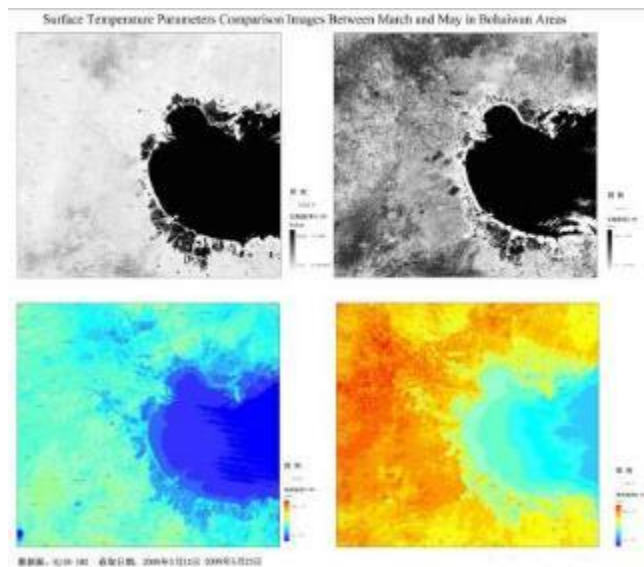
GF-6 2m(PAN), 8m(MSS), 16m(WFV)



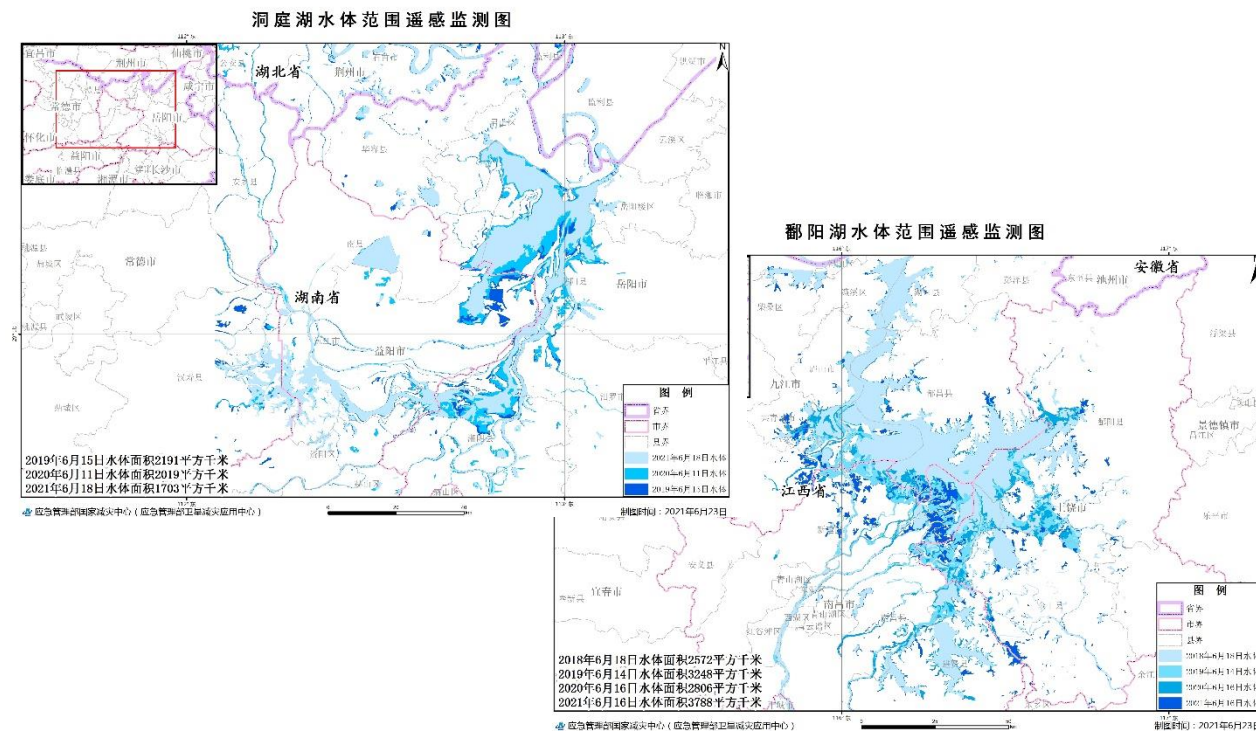
Disaster Elements Monitoring



Vegetation Growth Condition Monitoring



Water Area Extraction

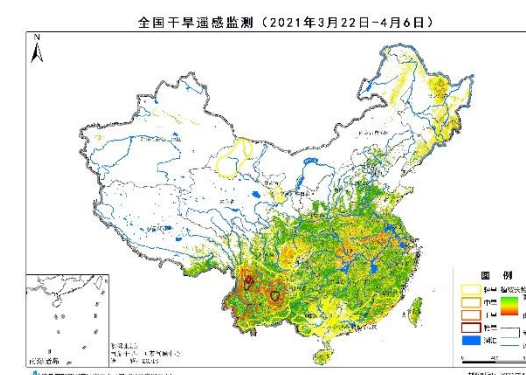
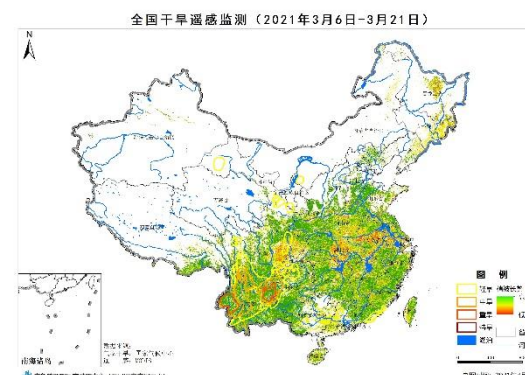
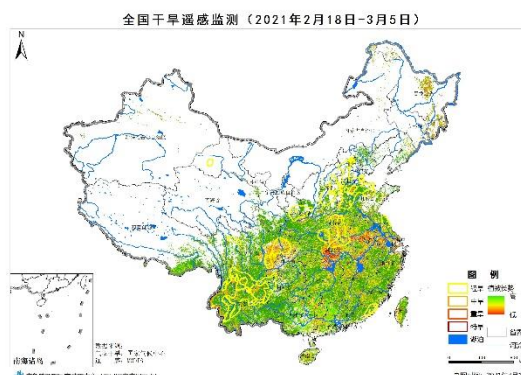
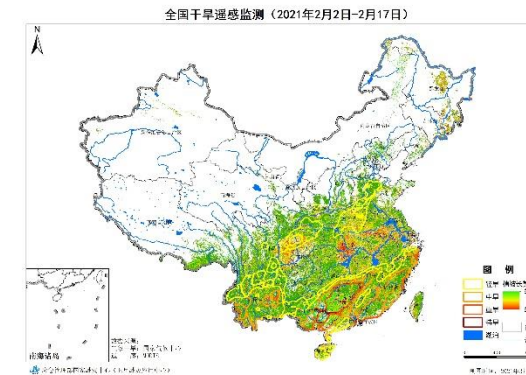
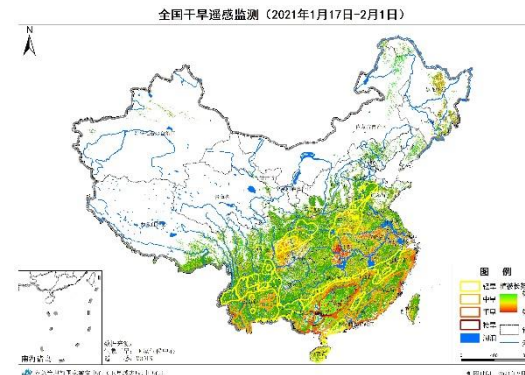
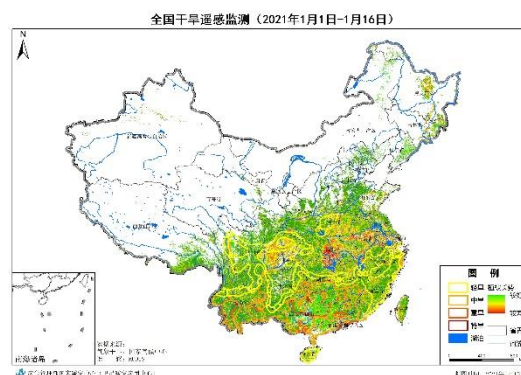


Disaster Risk Monitoring



Drought

Detecting the status and development of drought through integrating used of precipitation forecasting and drought monitoring based on meteorological drought index, vegetation condition index and other methods.

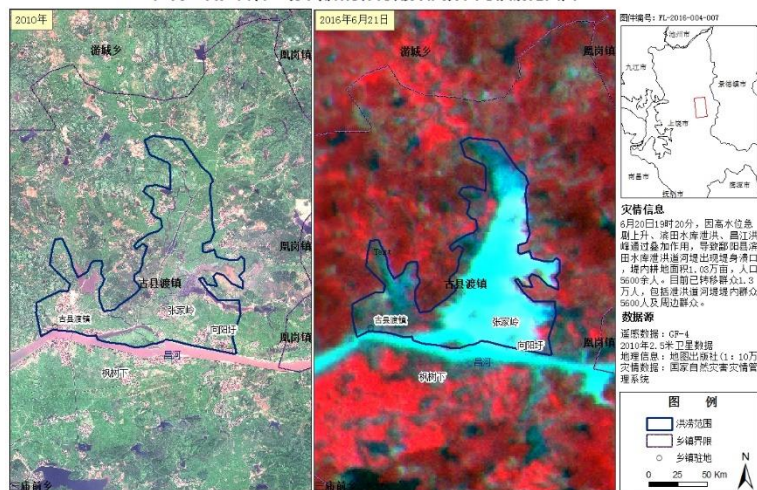




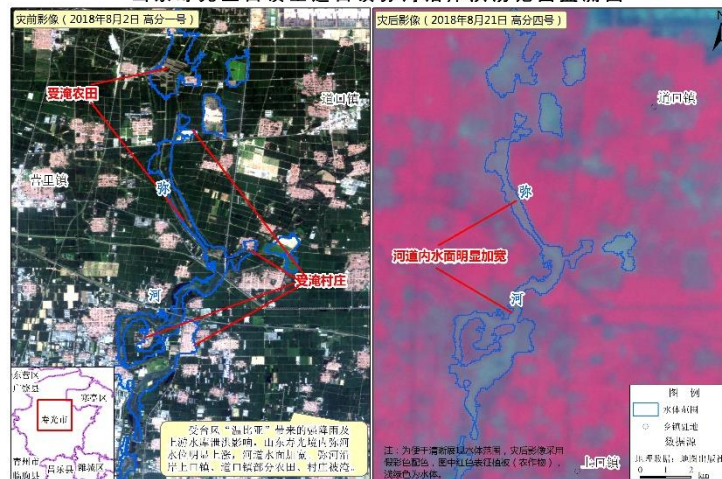
Emergency Monitoring-Flood

Rapid Response

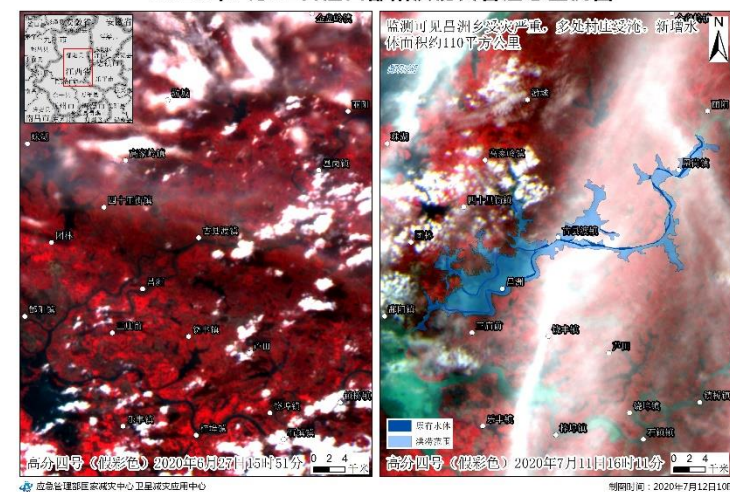
2016年6月21日江西省上饶市鄱阳县古县渡镇高分四号洪涝范围图



山东寿光上口镇至道口镇弥河沿岸洪涝范围监测图



2020年7月11日江西鄱阳洪涝灾害遥感监测图

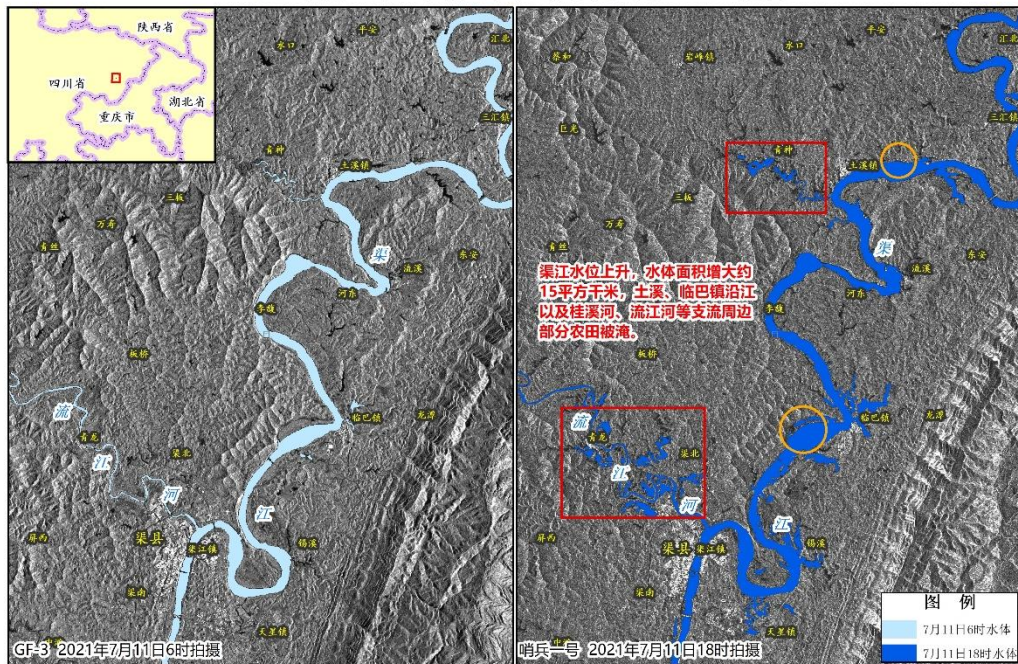




Emergency Monitoring-Flood

all-weather

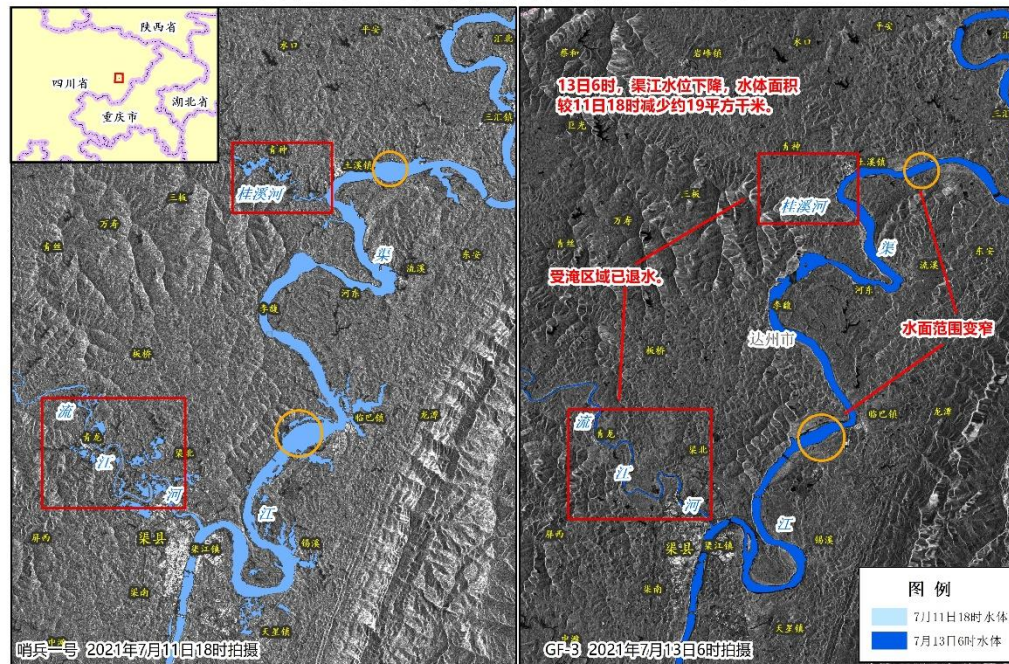
四川省达州市渠县洪涝灾害遥感监测图



应急管理部国家减灾中心（应急管理部卫星减灾应用中心）

制图时间：2021年7月12日

四川省达州市渠县洪涝灾害遥感监测图（二）



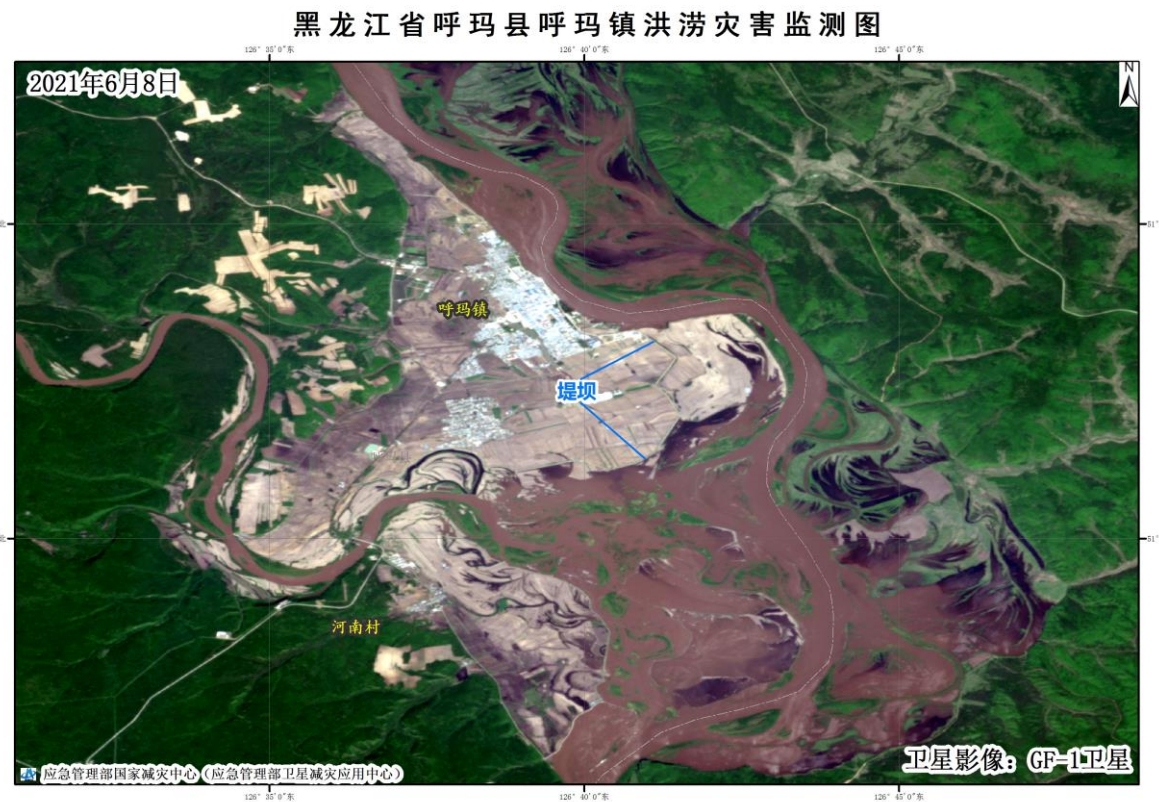
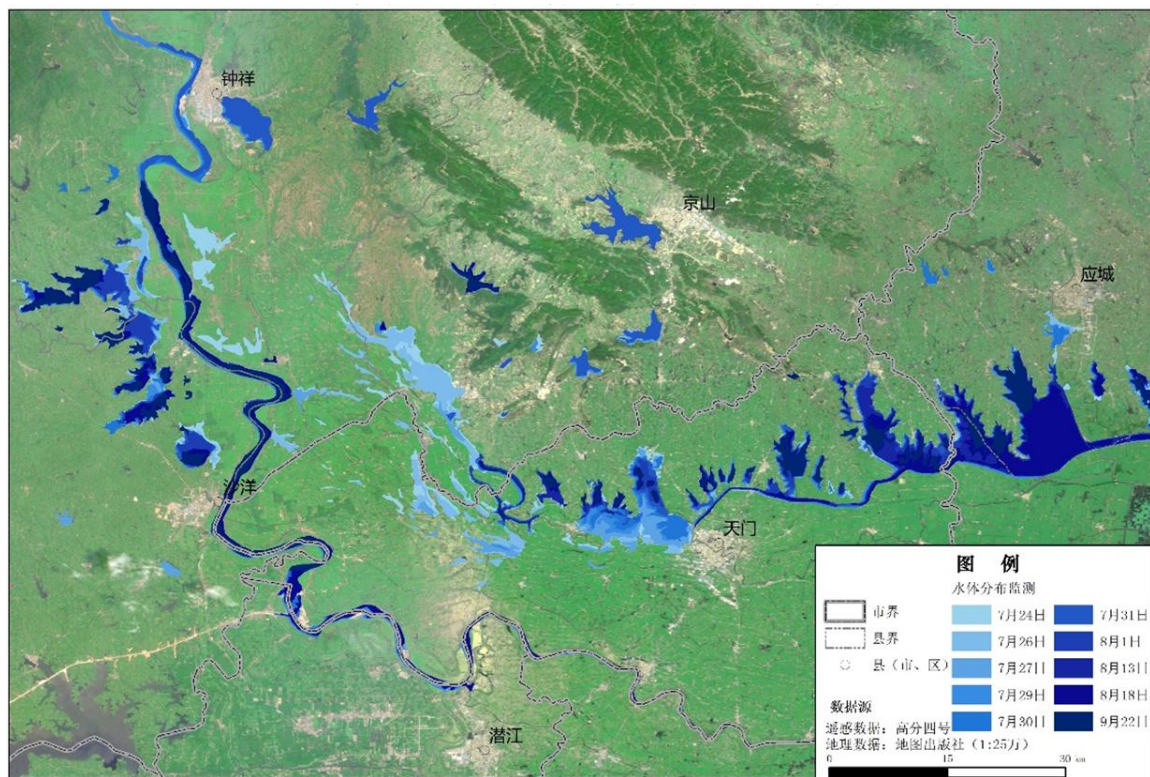
应急管理部国家减灾中心（应急管理部卫星减灾应用中心）

制图时间：2021年7月13日

Emergency Monitoring-Flood



Dynamic Monitoring





Thank You !